

ILS or LOC/DME RWY 15

LOC I-MXF 109.3	APCH CRS 150°	Rwy Idg 8008
		TDZE 171
		Arprt Elev 171

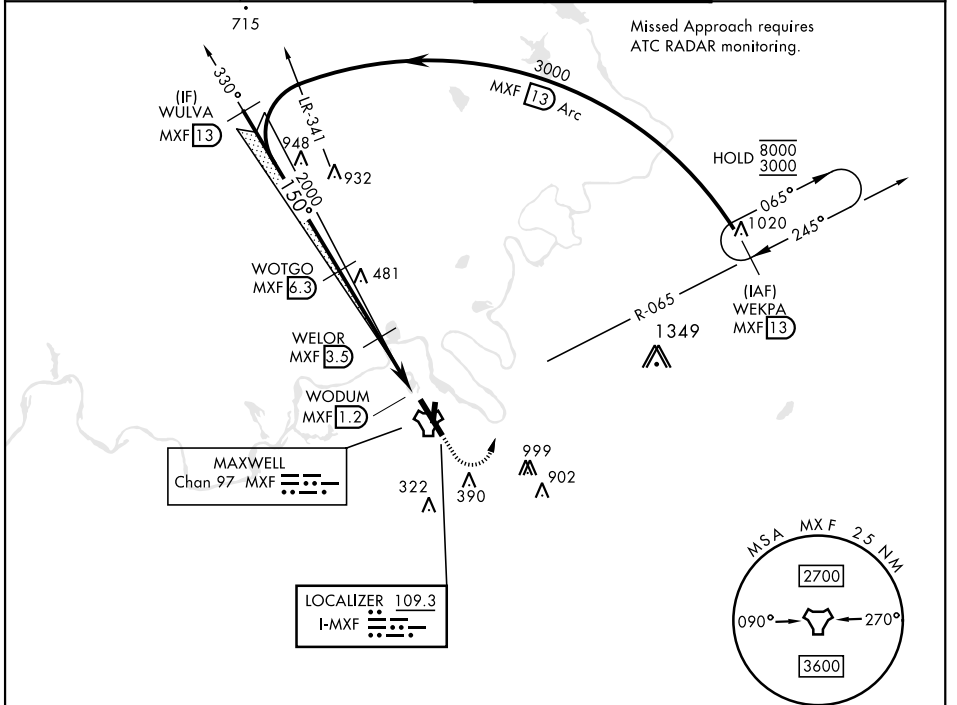
[USAF]

MAXWELL AFB (KMXF)

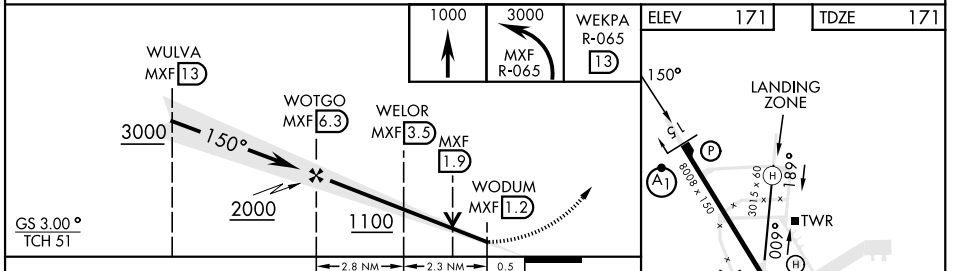
V * When ALS inop, increase RVR to 40 and vis to ¾ mile.
 ** When ALS inop, increase CAT AB RVR to 55 and vis to 1 mile, CAT CDE vis to 1¼ mile.
 *** Circling not authorized E of Rwy 15-33.

ALSF-1 MISSED APPROACH: Climb to 1000, then climbing left turn to 3000 to intercept MXF TACAN R-065 outbound to 13 DME (WEKPA) and hold.

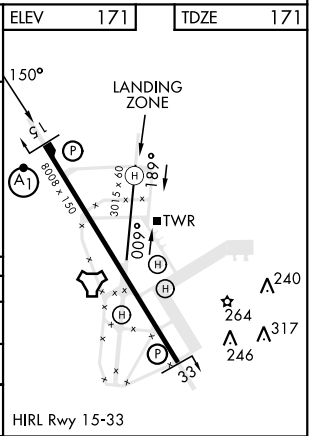
ATIS ★ 134.7 269.9	MONTGOMERY APP CON ★ 121.2 269.05 (N) 124.0 363.025 (S)	TOWER ★ 118.15 253.5	GND CON ★ 127.15 289.4
------------------------------	---	--------------------------------	----------------------------------



EMERG SAFE ALT 100 NM 5000



CATEGORY	A	B	C	D	E
S-ILS 15 *	371/24		200	(200-½)	
S-LOC 15 **	600/24	429 (500-½)	600/40	429	(500-¾)
*** CIRCLING	680-1	509 (600-1)	720-1½ 549 (600-1½)	920-2½ 749 (800-2½)	NA



ILS or LOC/DME RWY 15

SE-4, 23 JAN 2025 to 20 FEB 2025

SE-4, 23 JAN 2025 to 20 FEB 2025