

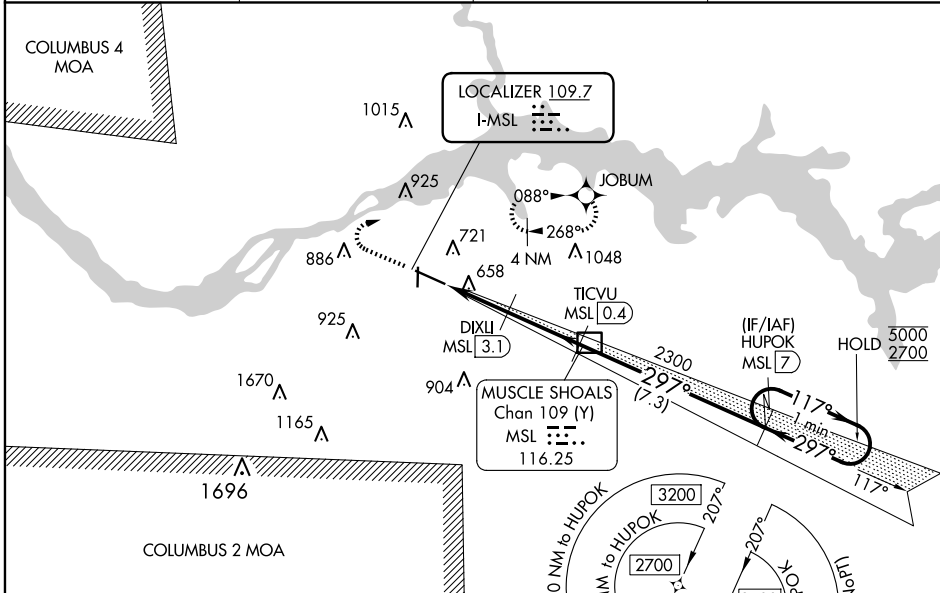
LOC I-MSL <b>109.7</b>	APP CRS <b>297°</b>	Rwy Idg TDZE Apt Elev	<b>6694</b> <b>551</b> <b>551</b>
---------------------------	------------------------	-----------------------------	---

# ILS Y or LOC Y RWY 30

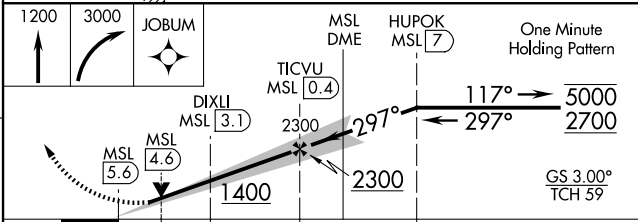
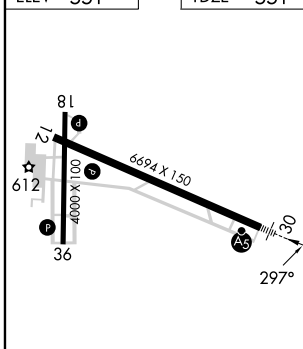
NORTHWEST ALABAMA RGNL (MSL)

RNAV 1 - GPS.		MALSR 	MISSED APPROACH: Climb to 1200 then climbing right turn to 3000 direct JOBUM and hold, continue climb-in-hold to 3000.
DME required.			
DME from MSL DME. Simultaneous reception of I-MSL and MSL DME required. For inop ALS increase S-LOC 30 Cats C/D visibility to 1 SM.			

ASOS <b>119.425</b>	MEMPHIS CENTER <b>120.8 307.0</b>	GCO <b>121.725</b>	UNICOM <b>123.05 (CTAF) 0</b>
------------------------	--------------------------------------	-----------------------	----------------------------------



ELEV 551	TDZE 551
----------	----------



CATEGORY	A	B	C	D
S-ILS 30		751-1/2	200 (200-1/2)	
S-LOC 30	920-1/2	369 (400-1/2)	920-5/8	369 (400-5/8)
CIRCLING	1040-1	489 (500-1)	1280-2 729 (800-2)	1280-2 1/4 729 (800-2 1/4)

- REIL Rwy 12 0
- MIRL Rwy 18-36 0
- HIRL Rwy 12-30 0

SE-4, 23 JAN 2025 to 20 FEB 2025

SE-4, 23 JAN 2025 to 20 FEB 2025