

RNAV 1 - DME/DME/IRU or GPS.

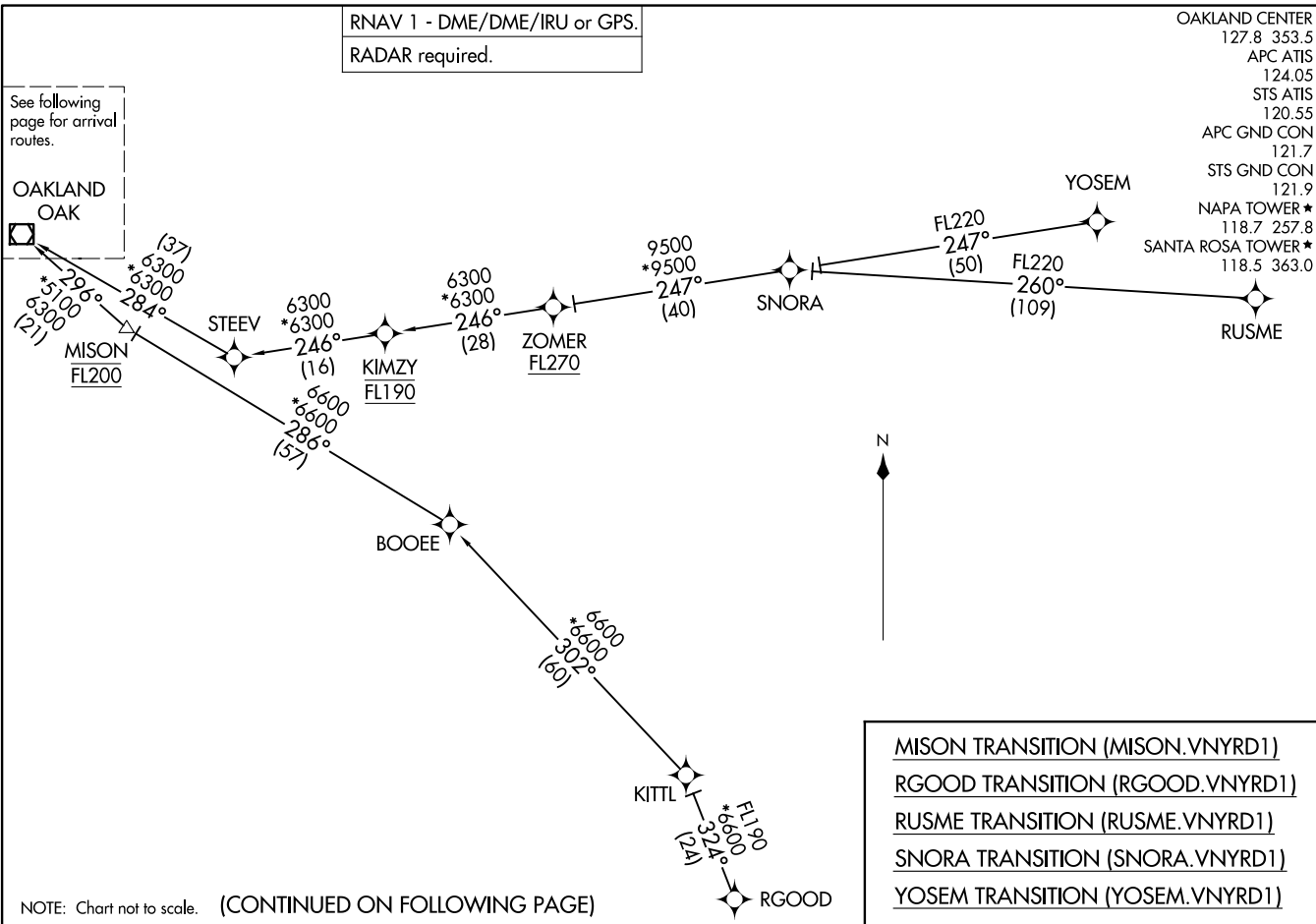
RADAR required.

OAKLAND CENTER  
 127.8 353.5  
 APC ATIS  
 124.05  
 STS ATIS  
 120.55  
 APC GND CON  
 121.7  
 STS GND CON  
 121.9  
 NAPA TOWER ★  
 118.7 257.8  
 SANTA ROSA TOWER ★  
 118.5 363.0

(OAK.VNYRD1) 24193  
 VNYRD ONE ARRIVAL (RNAV) Transition Routes

NAPA, CALIFORNIA

AL-281 (FAA)



VNYRD ONE ARRIVAL (RNAV) Transition Routes  
 (OAK.VNYRD1) 11 JUL 24

NAPA, CALIFORNIA

NOTE: Chart not to scale. (CONTINUED ON FOLLOWING PAGE)

(OAK.VNYRD1) 24305

AL-281 (FAA)

# VNYRD ONE ARRIVAL (RNAV) Arrival Routes

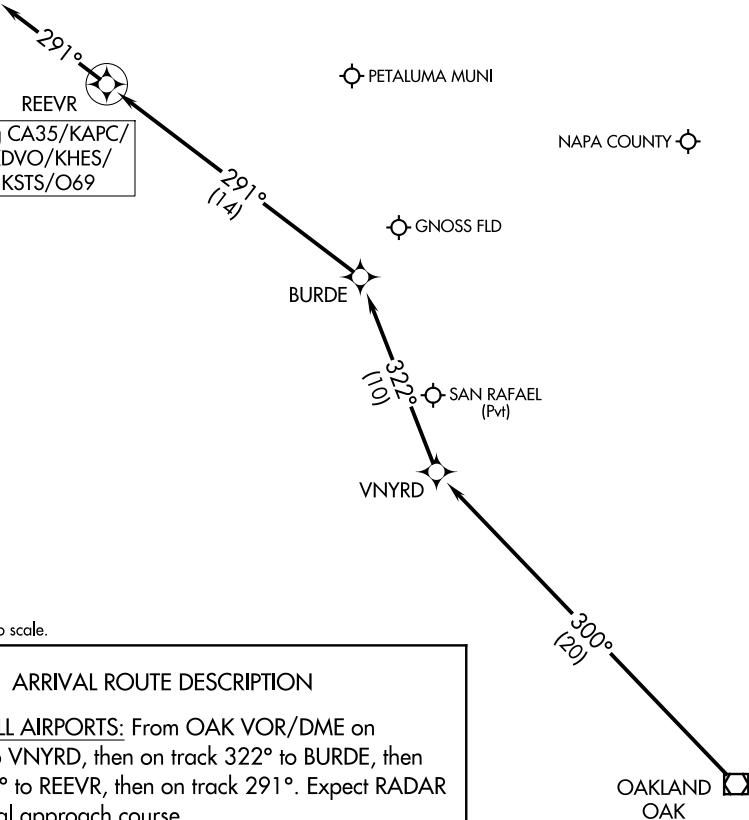
NAPA, CALIFORNIA

HEALDSBURG  
MUNI

RNAV 1 - DME/DME/IRU or GPS.  
RADAR required.

OAKLAND CENTER  
127.8 353.5  
APC ATIS  
124.05  
STS ATIS  
120.55  
APC GND CON  
121.7  
STS GND CON  
121.9  
NAPA TOWER ★  
118.7 257.8  
SANTA ROSA TOWER ★  
118.5 363.0

CHARLES M SCHULZ/  
SONOMA COUNTY



Ldg CA35/KAPC/  
KDVO/KHES/  
KSTS/O69

NOTE: Chart not to scale.

## ARRIVAL ROUTE DESCRIPTION

LANDING ALL AIRPORTS: From OAK VOR/DME on track 300° to VNYRD, then on track 322° to BURDE, then on track 291° to REEVR, then on track 291°. Expect RADAR vectors to final approach course.

# VNYRD ONE ARRIVAL (RNAV) Arrival Routes

NAPA, CALIFORNIA

(OAK.VNYRD1) 11JUL24

SW-2, 23 JAN 2025 to 20 FEB 2025

SW-2, 23 JAN 2025 to 20 FEB 2025