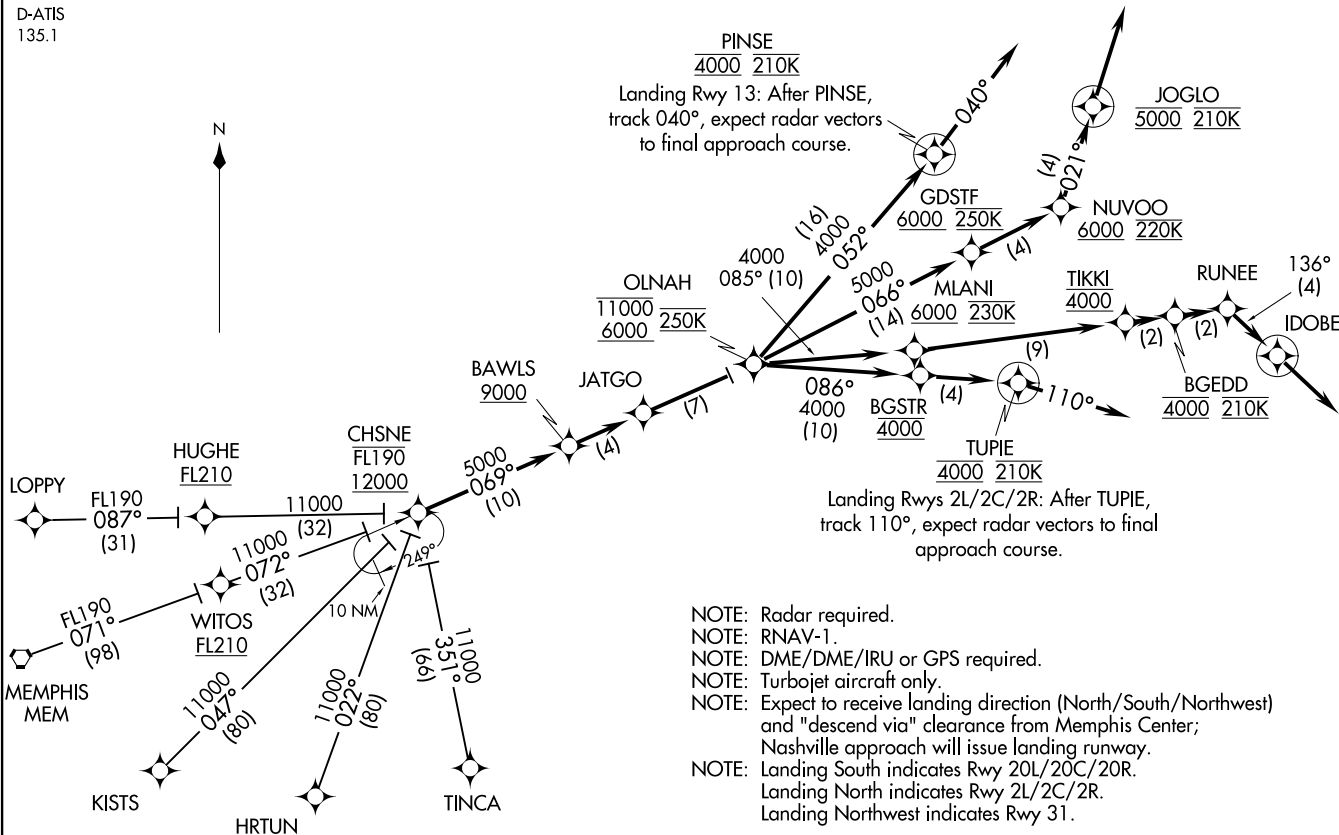


NASHVILLE WEST APP CON
119.35 372.0
D-ATIS
135.1



CHSNE TWO ARRIVAL (RNAV)
(CHSNE:CHSNE2) 24JUL14

NASHVILLE, TENNESSEE
NASHVILLE INTL (RNAV)



(NARRATIVE ON FOLLOWING PAGE)

NOTE: Chart not to scale.

(CHSNE:CHSNE2) 22195
CHSNE TWO ARRIVAL (RNAV)

NASHVILLE INTL (RNAV)
NASHVILLE, TENNESSEE

AL-282 (FAA)

CHSNE TWO ARRIVAL (RNAV)

ARRIVAL ROUTE DESCRIPTION

HRTUN TRANSITION (HRTUN.CHSNE2)

KISTS TRANSITION (KISTS.CHSNE2)

LOPPY TRANSITION (LOPPY.CHSNE2)

MEMPHIS TRANSITION (MEM.CHSNE2)

TINCA TRANSITION (TINCA.CHSNE2)

From over CHSNE on track 069° to cross BAWLS at/above 9000, then on track 069° to JATGO, then on track 069° to cross OLNAH at/above 6000 and at/below 11000 and at 250K, then on assigned runway transition.

LANDING NORTH (RWY 2L/2C/2R): From over OLNAH on track 086° to cross BGSTR at 4000, then on track 086° to cross TUPIE at 4000 and at 210K, then on track 110°. Expect radar vectors to final approach course.

LANDING RWY 13: From over OLNAH on track 052° to cross PINSE at 4000 and at 210K, then on track 040°. Expect radar vectors to final approach course.

LANDING SOUTH (RWY 20L/20C/20R): From over OLNAH on track 066° to cross GDSTF at/above 6000 and at 250K, then on track 066° to cross NUVOO at/above 6000 and at 220K, then on track 021° to cross JOGLO at 5000 and at 210K, then on track 021°. Expect radar vectors to final approach course.

LANDING NORTHWEST (RWY 31): From over OLNAH on track 085° to cross MLANI at/above 6000 and at 230K, then on track 085° to cross TIKKI at 4000, then on track 085° to cross BGEDD at 4000 and at 210K, then on track 085° to RUNEE, then on track 136° to IDOBE, then on track 136°. Expect radar vectors to final approach course.

SE-1, 23 JAN 2025 to 20 FEB 2025

SE-1, 23 JAN 2025 to 20 FEB 2025