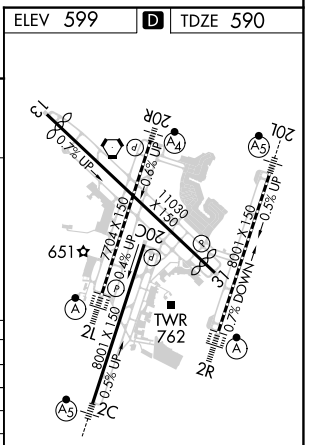
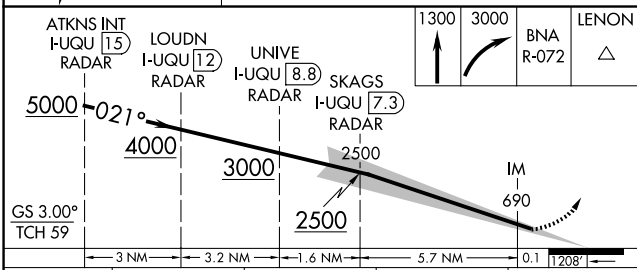
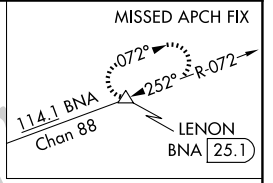
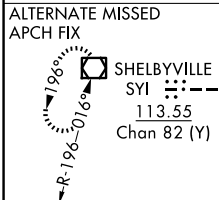
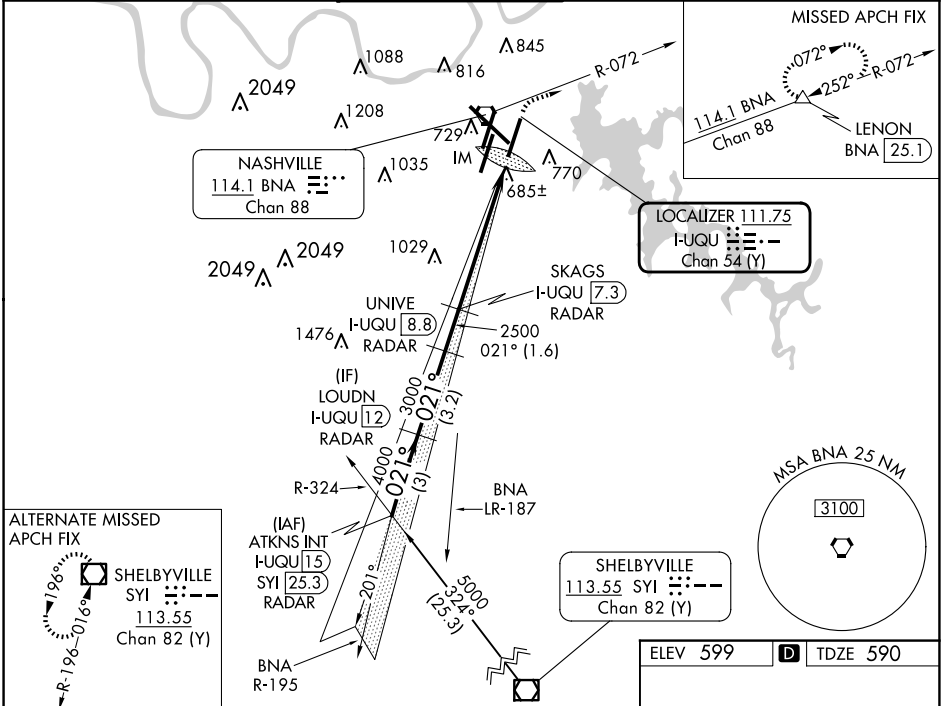


LOC/DME I-UQU 111.75 Chan 54 (Y)	APP CRS 021°	Rwy Idg 8000 TDZE 590 Apt Elev 599
--	------------------------	---

ILS RWY 2R (CAT II & III)

NASHVILLE INTL (BNA)

DME required.		ALSf-2	MISSED APPROACH: Climb to 1300 then climbing right turn to 3000 on BNA R-072 to LENON/BNA 25.1 DME and hold.		
Simultaneous approach authorized with Rwy 2L/C.			D-ATIS 135.1	NASHVILLE APP CON 118.4 360.7	NASHVILLE TOWER 118.6 257.8
			GND CON 121.9 348.6	CLNC DEL 126.05	CPDLC



CATEGORY	A	B	C	D
S-ILS 2R	CAT II RA 116/12 100 DA 690			
S-ILS 2R	CAT IIIa RVR 07			
S-ILS 2R	CAT IIIb RVR 06			
S-ILS 2R	CAT IIIc NA			

CATEGORY II & III ILS - SPECIAL AIRCREW & AIRCRAFT CERTIFICATION REQUIRED

HIRL all Rwys
TDZ/CL Rwys 2L and 2R
REIL Rwys 13, 20C, and 31

SE-1, 23 JAN 2025 to 20 FEB 2025

SE-1, 23 JAN 2025 to 20 FEB 2025