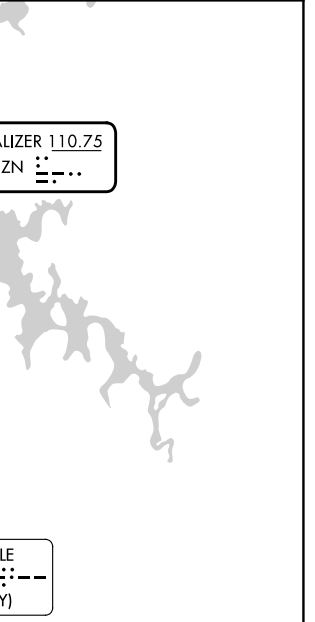
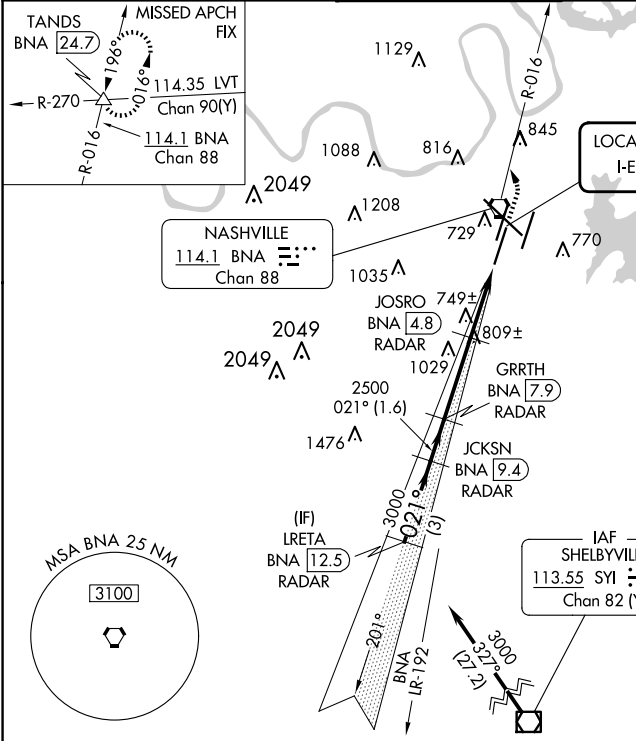


# ILS or LOC RWY 2C

NASHVILLE INTL (BNA)

LOC I-EZN <b>110.75</b>	APP CRS <b>021°</b>	Rwy Idg 7601
		TDZE 587
		Apt Elev 599

DME or RADAR required.		MALSR		MISSED APPROACH: Climb to 1300 then climbing left turn to 4000 on BNA VORTAC R-016 to TANDS INT/BNA 24.7 and hold.	
▼ Simultaneous approach authorized. For inop ALS, increase S-LOC 2C Cats C and D visibility to RVR 6000. DME from BNA VORTAC. ▲ Simultaneous reception of I-EZN and BNA DME required. # RVR 1800 authorized with the use of FD or AP or HUD to DA.					
D-ATIS <b>135.1</b>	NASHVILLE APP CON <b>118.4 360.7</b>	NASHVILLE TOWER <b>118.6 257.8</b>	GND CON <b>121.9 348.6</b>	CLNC DEL <b>126.05</b>	CPDLC



VGSI and ILS glidepath not coincident.

LRETA BNA [12.5] RADAR	JCKSN BNA [9.4] RADAR	GRRTH BNA [7.9] RADAR	JOSRO BNA [4.8] RADAR	TANDS BNA [2] RADAR
3000	2500	2000	1520	1300
GS 3.00° TCH 60	021°			
3 NM	1.6 NM	3.1 NM	1.6 NM	1.2 NM
3000	2500	2000	1520	1300
3000	2500	2000	1520	1300

\*LOC only.

CATEGORY	A	B	C	D
S-ILS 2C #	787/24		200 (200-1/2)	
S-LOC 2C	1000/24	413 (500-1/2)	1000/40	413 (500-3/4)
CIRCLING	1100-1 501 (600-1)	1120-1 521 (600-1)	1200-1 3/4 601 (700-1 3/4)	1380-2 1/2 781 (800-2 1/2)

ELEV	599	TDZE	587
HIRL all Rwys			
TDZ/CL Rws 2L and 2R			
REIL Rws 13, 20C, and 31			
FAF to MAP 5.9 NM			
Knots	60	90	120 150 180
Min:Sec	5:54	3:56	2:57 2:22 1:58

SE-1, 23 JAN 2025 to 20 FEB 2025

SE-1, 23 JAN 2025 to 20 FEB 2025