

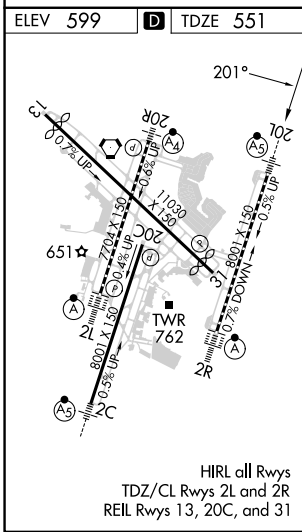
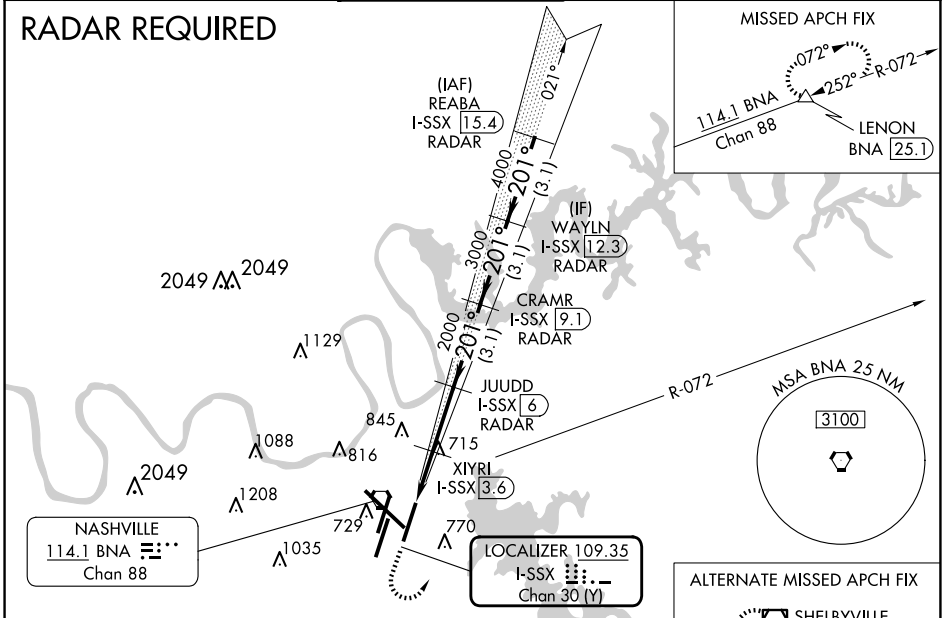
LOC/DME I-SSX 109.35 Chan 30 (Y)	APP CRS 201°	Rwy Idg TDZE 8000 551 Apt Elev 599
---	------------------------	---

ILS or LOC/DME RWY 20L

NASHVILLE INTL (BNA)

▽ Simultaneous approach authorized with Rwy 20R. ▲ DME required. **RVR 1800 authorized with the use of FD or AP or HUD to DA.	MALSRR 	MISSED APPROACH: Climb to 1300 then climbing left turn to 3000 on heading 040° and BNA VORTAC R-072 to LENON/BNA 25.1 DME and hold.			
	D-ATIS 135.1	NASHVILLE APP CON 118.4 360.7	NASHVILLE TOWER 118.6 257.8	GND CON 121.9 348.6	CLNC DEL 126.05

RADAR REQUIRED



ELEV 599	D	TDZE 551						
			1300	3000	BNA R-072	LENON	REABA I-SSX 15.4 RADAR	
			*LOC only.		XIYRI I-SSX 3.6	JUUDD I-SSX 6 RADAR	CRAMR I-SSX 9.1 RADAR	
			I-SSX 1.6	I-SSX 2.8	2000	2000	WAYLN I-SSX 12.3 RADAR	
			201°		3000	4000	5000	
					GS 3.00° TCH 55			
			CATEGORY		A	B	C	D
			S-ILS 20L		** 751/24 200 (200-½)			
			S-LOC 20L		980/24	429 (400-½)	980/40	429 (400-¾)
			C CIRCLING		1100-1 501 (600-1)	1120-1 521 (600-1)	1200-1¾ 601 (700-1¾)	1380-2½ 781 (800-2½)

SE-1, 23 JAN 2025 to 20 FEB 2025

SE-1, 23 JAN 2025 to 20 FEB 2025