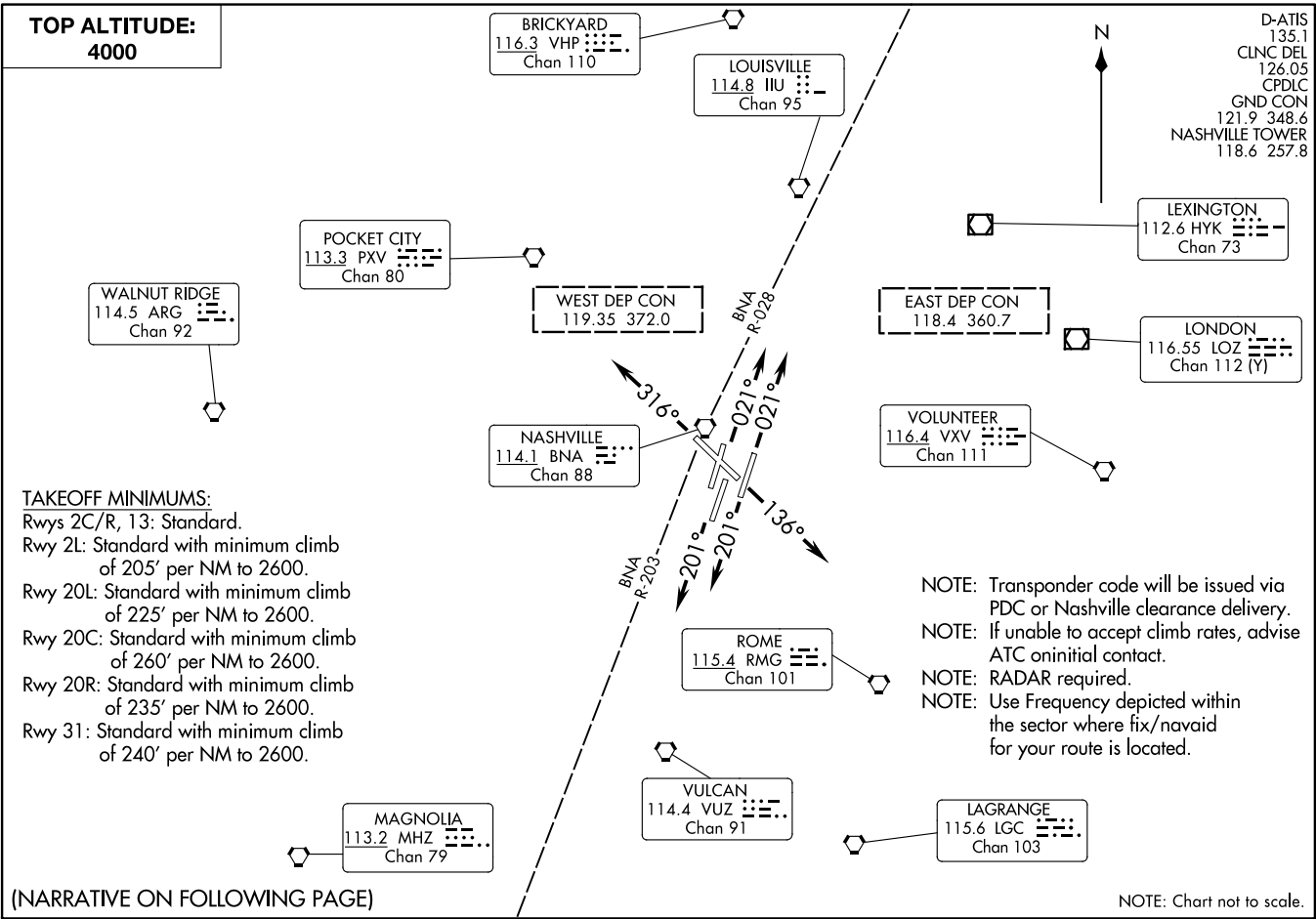


31DEC20

NASHVILLE SEVEN DEPARTURE

NASHVILLE, TENNESSEE
NASHVILLE INTL (BNA)



**TOP ALTITUDE:
4000**

TAKEOFF MINIMUMS:
 Rwy 2C/R, 13: Standard.
 Rwy 2L: Standard with minimum climb of 205' per NM to 2600.
 Rwy 20L: Standard with minimum climb of 225' per NM to 2600.
 Rwy 20C: Standard with minimum climb of 260' per NM to 2600.
 Rwy 20R: Standard with minimum climb of 235' per NM to 2600.
 Rwy 31: Standard with minimum climb of 240' per NM to 2600.

(NARRATIVE ON FOLLOWING PAGE)

NOTE: Transponder code will be issued via PDC or Nashville clearance delivery.
 NOTE: If unable to accept climb rates, advise ATC on initial contact.
 NOTE: RADAR required.
 NOTE: Use Frequency depicted within the sector where fix/navaid for your route is located.

NOTE: Chart not to scale.

25023
NASHVILLE SEVEN DEPARTURE

NASHVILLE INTL (BNA)
NASHVILLE, TENNESSEE

AL-282 (FAA)

NASHVILLE SEVEN DEPARTURE



DEPARTURE ROUTE DESCRIPTION

TAKEOFF RUNWAYS 2L/C/R: Climb on heading 021° or assigned ATC heading, thence....

TAKEOFF RUNWAY 13: Climb on heading 136° or assigned ATC heading, thence....

TAKEOFF RUNWAYS 20L/C/R: Climb on heading 201° or assigned ATC heading, thence....

TAKEOFF RUNWAY 31: Climb on heading 316° or assigned ATC heading, thence....

....maintain 4000. Expect radar vectors and clearance to filed altitude within 5 minutes after departure.

SE-1, 23 JAN 2025 to 20 FEB 2025

SE-1, 23 JAN 2025 to 20 FEB 2025