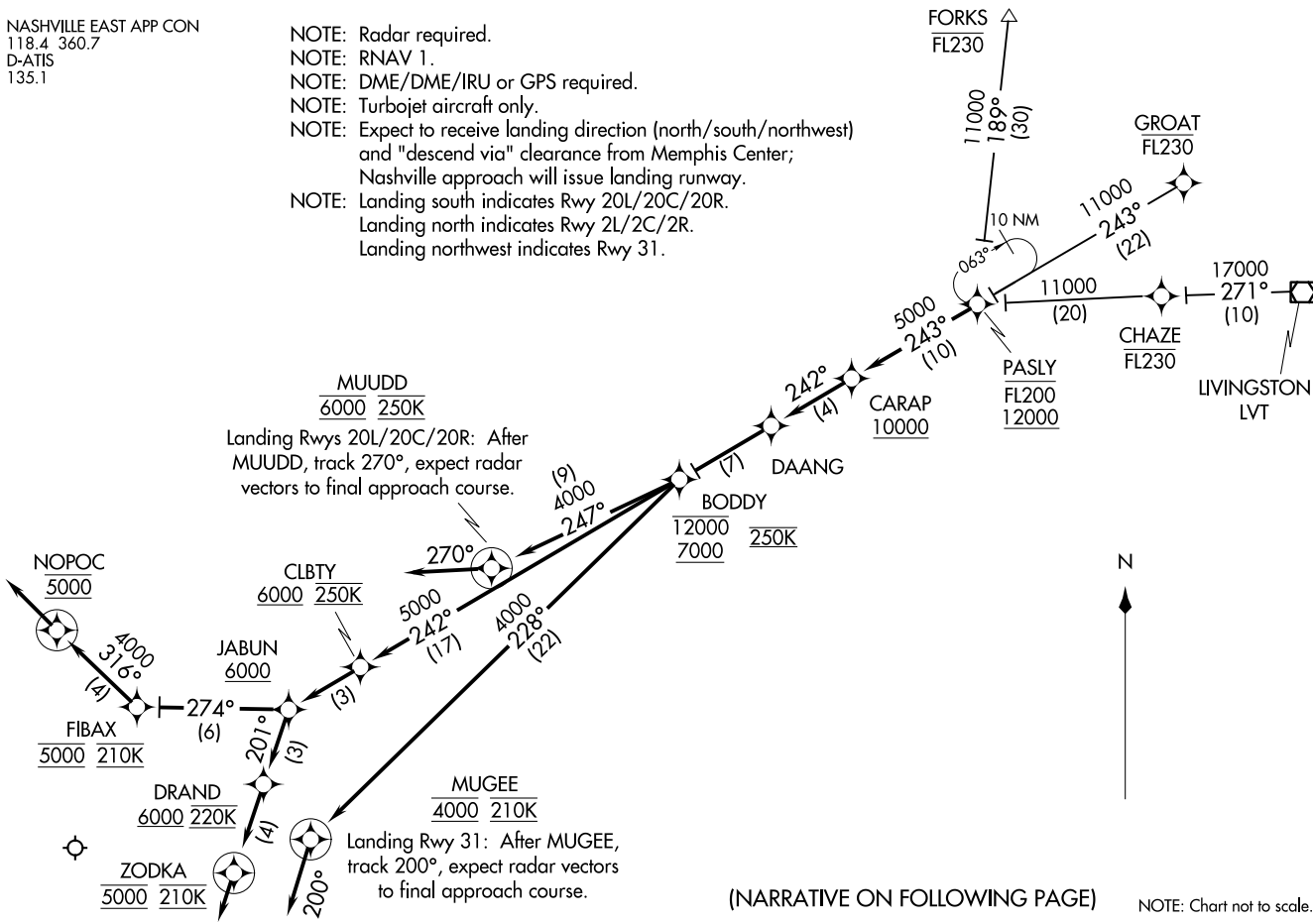


NASHVILLE EAST APP CON
118.4 360.7
D-ATIS
135.1

- NOTE: Radar required.
- NOTE: RNAV 1.
- NOTE: DME/DME/IRU or GPS required.
- NOTE: Turbojet aircraft only.
- NOTE: Expect to receive landing direction (north/south/northwest) and "descend via" clearance from Memphis Center; Nashville approach will issue landing runway.
- NOTE: Landing south indicates Rwy 20L/20C/20R.
- NOTE: Landing north indicates Rwy 21L/21C/21R.
- NOTE: Landing northwest indicates Rwy 31.



Landing Rwy 20L/20C/20R: After MUUDD, track 270°, expect radar vectors to final approach course.

Landing Rwy 31: After MUGEE, track 200°, expect radar vectors to final approach course.

(NARRATIVE ON FOLLOWING PAGE)

NOTE: Chart not to scale.

PASLY FOUR ARRIVAL (RNAV)
(PASLY.PASLY4) 05JAN17

NASHVILLE, TENNESSEE
NASHVILLE INTL (BNA)

PASLY FOUR ARRIVAL (RNAV)
(PASLY.PASLY4) 17117

NASHVILLE INTL (BNA)
NASHVILLE, TENNESSEE

AL-282 (FAA)

PASLY FOUR ARRIVAL (RNAV)

ARRIVAL ROUTE DESCRIPTION

- FORKS TRANSITION (FORKS.PASLY4)
- GROAT TRANSITION (GROAT.PASLY4)
- LIVINGSTON TRANSITION (LVT.PASLY4)

From over PASLY on track 243° to cross CARAP at/above 10000, then on track 242° to DAANG, then on track 242° to cross BODDY at/above 7000 and at/below 12000 and at 250K, then on assigned runway transition.

LANDING NORTH RWYS 2L/2C/2R: From over BODDY on track 242° to cross CLBTY at/above 6000 and at 250K, then on track 242° to cross JABUN at/above 6000, then on track 201° to cross DRAND at/above 6000 and at 220K, then on track 201° to cross ZODKA at 5000 and at 210K, then on track 201°. Expect radar vectors to final approach course.

LANDING SOUTH RWYS 20L/20C/20R: From over BODDY on track 247° to cross MUDD at 6000 and at 250K, then on track 270°. Expect radar vectors to final approach course.

LANDING NORTHWEST RWY 31: From over BODDY on track 228° to cross MUGEE at 4000 and at 210K, then on track 200°. Expect radar vectors to final approach course.

LANDING RWY 13: From over BODDY on track 242° to cross CLBTY at/above 6000 and at 250K, then on track 242° to cross JABUN at/above 6000, then on track 274° to cross FIBAX at 5000 and at 210K, then on track 316° to cross NOPOC at 5000, then on track 316°. Expect radar vectors to final approach course.

SE-1, 23 JAN 2025 to 20 FEB 2025

SE-1, 23 JAN 2025 to 20 FEB 2025