

# RNAV (RNP) Z RWY 20R

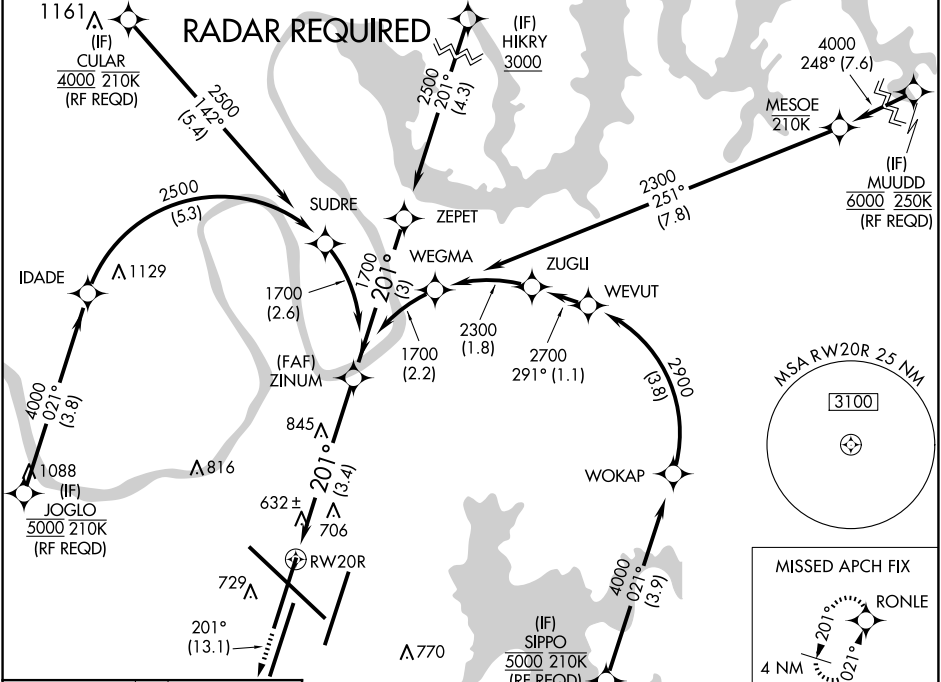
NASHVILLE INTL (BNA)

APP CRS <b>201°</b>	Rwy Idg <b>7702</b>
	TDZE <b>578</b>
	Apt Elev <b>599</b>

**GPS required.** Simultaneous approach authorized with Rwy 20L. Use of FD or AP providing RNAV track guidance required during simultaneous operations. For uncompensated Baro-VNAV systems, procedure NA below -11°C (13°F) or above 54°C (130°F). For inoperative MALSF, increase RNP 0.18 all Cats visibility to RVR 5600 and RNP 0.30 all Cts visibility to 1/2.

MALSF 	<b>MISSED APPROACH:</b> Climb to 3000 on track 201° to RONLE and hold.
-----------	---

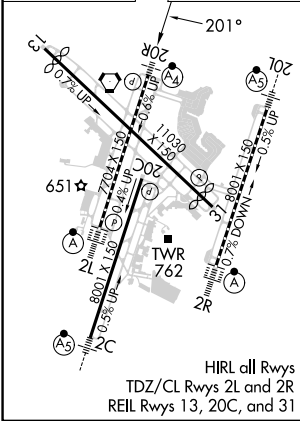
D-ATIS <b>135.1</b>	NASHVILLE APP CON <b>118.4 360.7</b>	NASHVILLE TOWER <b>118.6 257.8</b>	GND CON <b>121.9 348.6</b>	CLNC DEL <b>126.05</b>	CPDLC
------------------------	---	---------------------------------------	-------------------------------	---------------------------	-------



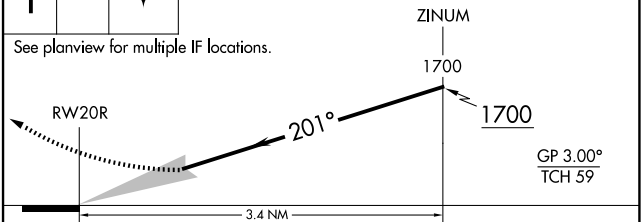
SE-1, 23 JAN 2025 to 20 FEB 2025

SE-1, 23 JAN 2025 to 20 FEB 2025

ELEV 599	<b>D</b>	TDZE 578
----------	----------	----------



3000	tr 201°	RONLE	VGSI and RNAV glidepath not coincident (VGSI Angle 3.00/TCH 79).
------	---------	-------	--



See planview for multiple IF locations.			
CATEGORY	A	B	C
RNP 0.18 DA		927/42	349 (400-7/8)
RNP 0.30 DA		1042/60	464 (500-1 1/4)

## AUTHORIZATION REQUIRED