

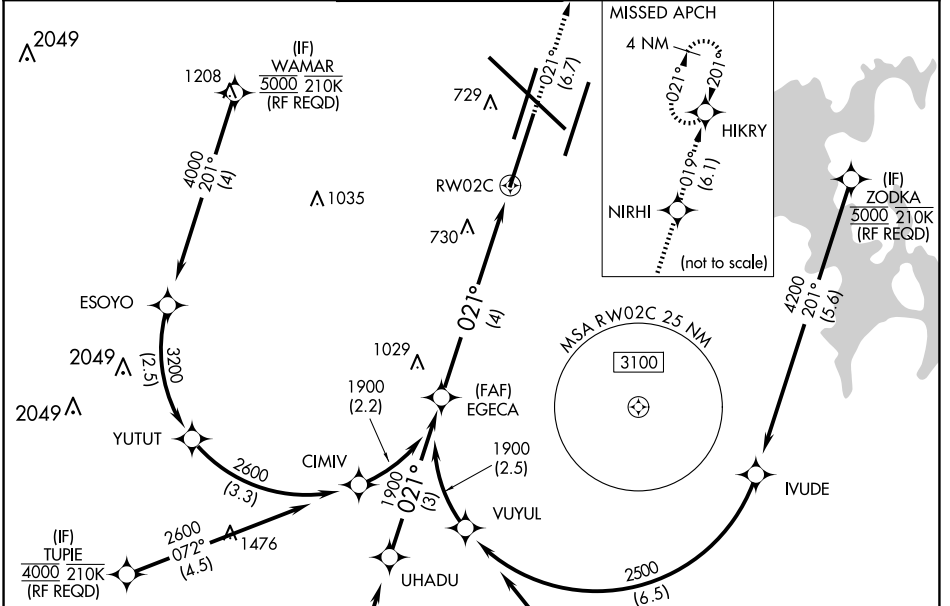
# RNAV (RNP) Z RWY 2C

NASHVILLE INTL (BNA)

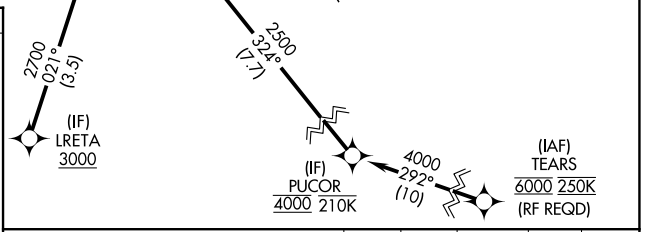
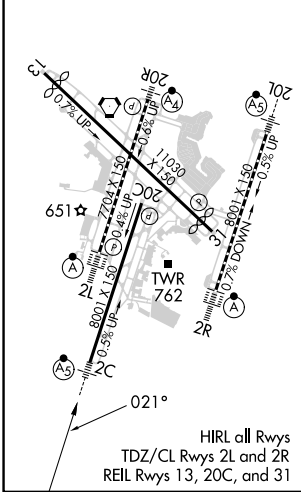
APP CRS	Rwy Idg	<b>7601</b>
<b>021°</b>	TDZE	<b>587</b>
	Apt Elev	<b>599</b>

RNP AR APCH - GPS.	MALSR	MISSED APPROACH: Climb to 4000 on track 021° to NIRHI and on track 019° to HIKRY and hold, continue climb-in-hold to 4000.
▼ For uncompensated Baro-VNAV systems, procedure NA below -11°C or above 54°C. Simultaneous approach authorized with Rwy 2R. Use of FD or AP providing RNAV track guidance required during simultaneous operations. For inop MALSR, increase RNP 0.30 visibility to 1½ mile.		

D-ATIS	NASHVILLE APP CON	NASHVILLE TOWER	GND CON	CLNC DEL	CPDLC
<b>135.1</b>	<b>118.4 360.7</b>	<b>118.6 257.8</b>	<b>121.9 348.6</b>	<b>126.05</b>	



ELEV 599	<b>D</b>	TDZE 587
----------	----------	----------



EGECA	See planview for multiple IF locations.	4000	NIRHI	HIKRY
1900		tr 021°	tr 019°	
GP 3.00°				
TCH 60				
		4 NM		

CATEGORY	A	B	C	D
RNP 0.15 DA		882/24	295 (300-½)	
RNP 0.30 DA		1067/57	480 (500-1½)	

## AUTHORIZATION REQUIRED

SE-1, 23 JAN 2025 to 20 FEB 2025

SE-1, 23 JAN 2025 to 20 FEB 2025