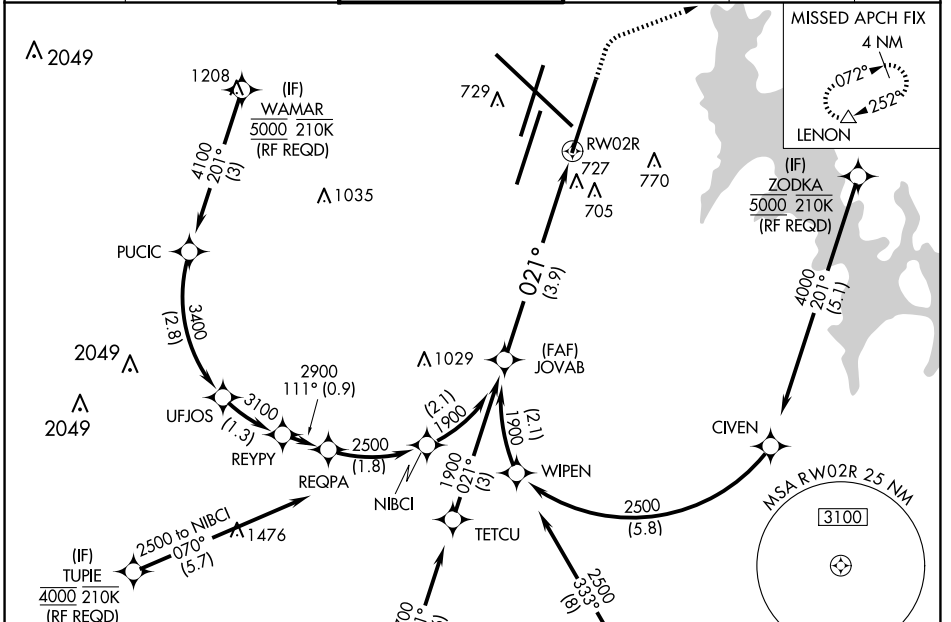


APP CRS	Rwy Idg	8000
021°	TDZE	590
	Apt Elev	599

RNAV (RNP) Z RWY 2R

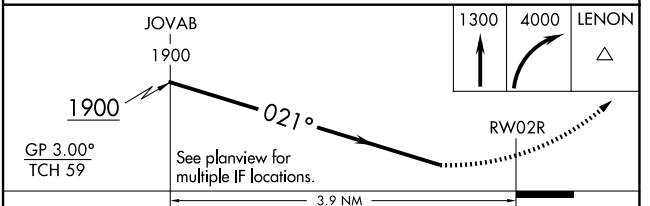
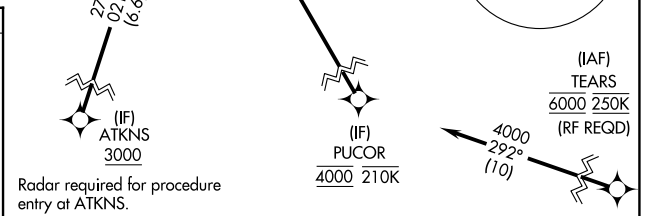
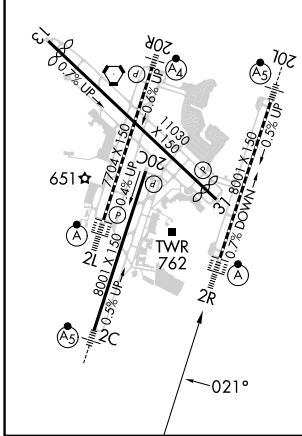
NASHVILLE INTL (BNA)

RNP AR APCH.		ALSIF-2		MISSED APPROACH: Climb to 1300 then climbing right turn to 4000 direct LENON and hold.	
<p>▼ For uncompensated Baro-VNAV systems, procedure NA below -11°C or above 54°C. For inoperative ALSIF-2, increase RNP 0.15 all Cats visibility to RVR 5600, RNP 0.30 all Cats visibility to 1 3/8 mile. Simultaneous approach authorized with Rwy 2L/C. Use of FD or AP providing RNAV track guidance required during simultaneous operations.</p>					
D-ATIS	NASHVILLE APP CON	NASHVILLE TOWER	GND CON	CLNC DEL	CPDLC
135.1	118.4 360.7	118.6 257.8	121.9 348.6	126.05	



ELEV 599	D	TDZE 590
----------	----------	----------

HIRL all Rwys
 TDZ/CL Rwys 2L and 2R
 REIL Rwys 13, 20C, and 31



CATEGORY	A	B	C	D
RNP 0.15 DA		938/40	348 (400-3/4)	
RNP 0.30 DA		1024/48	434 (500-1)	

AUTHORIZATION REQUIRED

SE-1, 23 JAN 2025 to 20 FEB 2025

SE-1, 23 JAN 2025 to 20 FEB 2025