

APP CRS 316°	Rwy ldg 9487
	TDZE 578
	Apt Elev 599

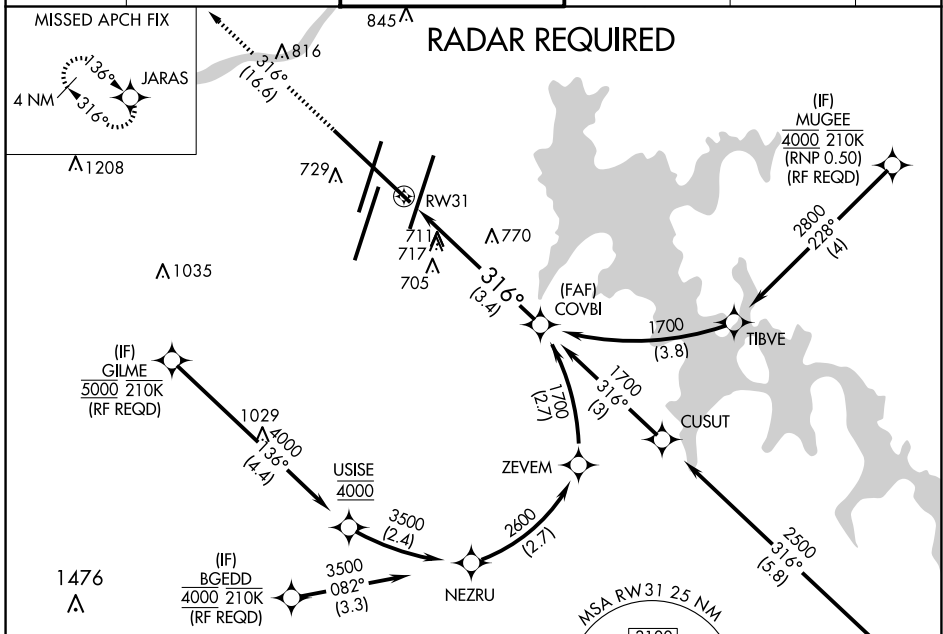
RNAV (RNP) Z RWY 31

NASHVILLE INTL (BNA)

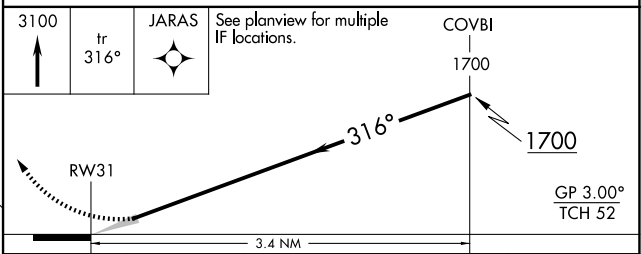
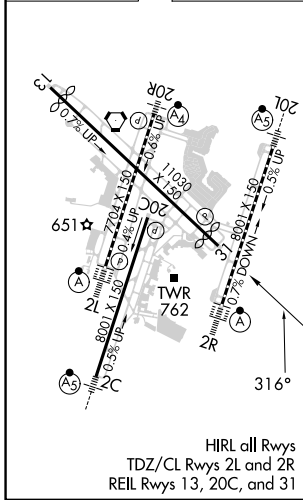
For uncompensated Baro-VNAV systems, procedure NA below -16°C (4°F) or above 54°C (130°F). GPS required.

MISSED APPROACH: Climb to 3100 on track 316° to JARAS and hold.

D-ATIS 135.1	NASHVILLE APP CON 118.4 360.7	NASHVILLE TOWER 118.6 257.8	GND CON 121.9 348.6	CLNC DEL 126.05	CPDLC
------------------------	---	---------------------------------------	-------------------------------	---------------------------	-------



ELEV 599	D	TDZE 578
----------	----------	----------



CATEGORY	A	B	C	D
RNP 0.25 DA		1025-1½	447 (500-1½)	
RNP 0.30 DA		1099-1¾	521 (600-1¾)	

AUTHORIZATION REQUIRED

SE-1, 23 JAN 2025 to 20 FEB 2025

SE-1, 23 JAN 2025 to 20 FEB 2025