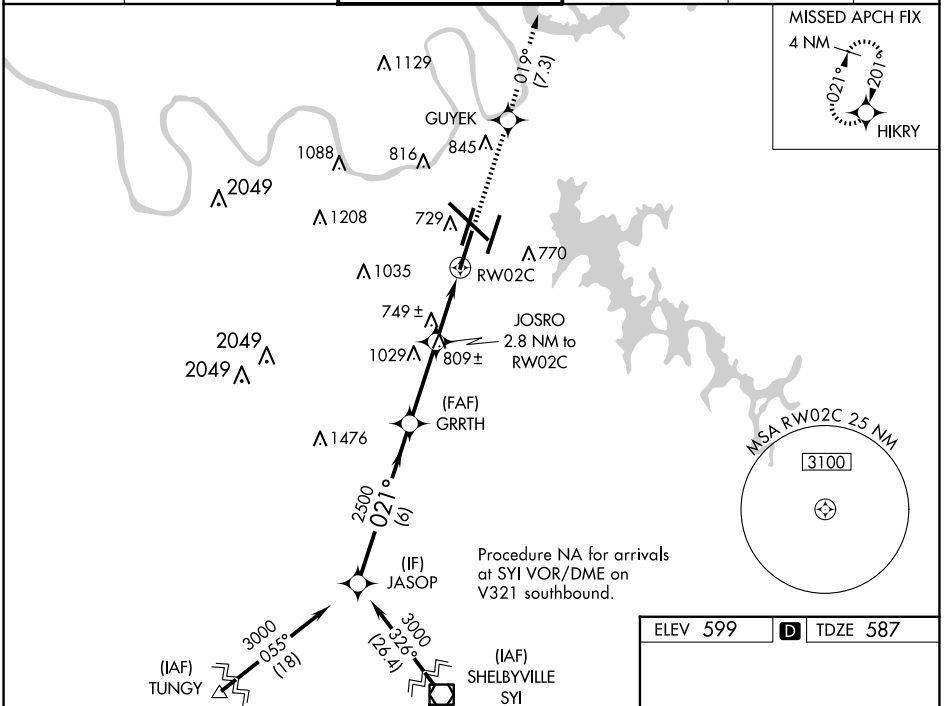


|  |                        |                             |   |
|--|------------------------|-----------------------------|---|
| WAAS<br>CH <b>70613</b><br><b>W02B</b> | APP CRS<br><b>021°</b> | Rwy Idg<br>TDZE<br>Apt Elev | <b>7601</b><br><b>587</b><br><b>599</b> |
|--|------------------------|-----------------------------|---|

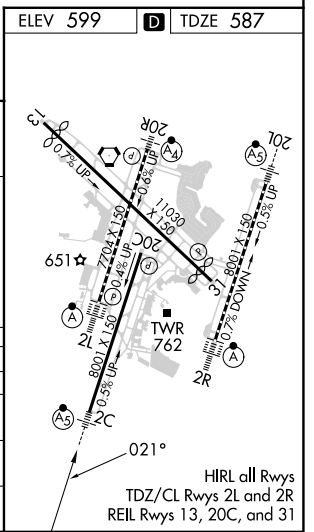
# RNAV (GPS) Y RWY 2C

NASHVILLE INTL (BNA)

|   |   |                                       |                               |  |       |
|---|---|---------------------------------------|-------------------------------|--|-------|
| RNP APCH - GPS.   |   | MALSR                                 |                               | MISSED APPROACH: Climb to 4000 direct GUYEK and on track 019° to HIKRY and hold, continue climb-in-hold to 4000. |       |
| <p>▼ For uncompensated Baro-VNAV systems, LNAV/VNAV NA below -11°C or above 54°C. Use of FD or AP providing RNAV track guidance required during simultaneous operations. LNAV procedure NA during simultaneous operations. Simultaneous approach authorized with Rwy 2R.</p> <p>▲ ** RVR 1800 authorized with use of FD or AP or HUD to DA.</p> |   |                                       |                               |  |       |
| D-ATIS<br><b>135.1</b>  | NASHVILLE APP CON<br><b>118.4 360.7</b> | NASHVILLE TOWER<br><b>118.6 257.8</b> | GND CON<br><b>121.9 348.6</b> | CLNC DEL<br><b>126.05</b>  | CPDLC |



|   |                       |                       |                         |                         |            |
|---|-----------------------|-----------------------|-------------------------|-------------------------|------------|
| VGSI and RNAV glidepath not coincident. |                       | 4000                  | GUYEK                   | tr 019°                 | HIKRY      |
| JASOP                                   | GRRTH                 | JOSRO                 |                         |                         |            |
| 3000                                    | 2500                  | 2.8 NM to RW02C       | *1.2 NM to RW02C        |                         | *LNAV only |
| GP 3.00°                                | 021°                  | *1520                 |                         |                         |            |
| TCH 60                                  | 6 NM                  | 3.1 NM                | 1.6 NM                  | 1.2 NM                  |            |
| CATEGORY                                | A                     | B                     | C                       | D                       |            |
| LPV DA**                                | 787/24                |                       | 200 (200-½)             |                         |            |
| LNAV/VNAV DA                            | 1059/60               |                       | 472 (500-1¼)            |                         |            |
| LNAV MDA                                | 1000/24               | 413 (500-½)           | 1000/40                 | 413 (500-¾)             |            |
| CIRCLING                                | 1100-1<br>501 (600-1) | 1120-1<br>521 (600-1) | 1200-1¾<br>601 (700-1¾) | 1380-2½<br>781 (800-2½) |            |



SE-1, 23 JAN 2025 to 20 FEB 2025

SE-1, 23 JAN 2025 to 20 FEB 2025