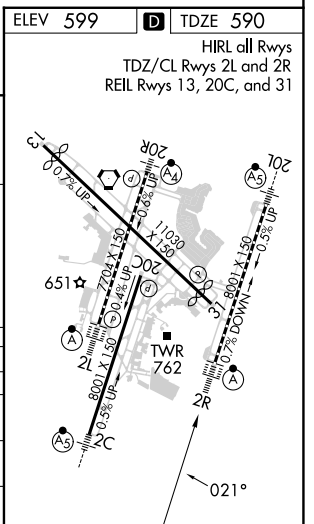
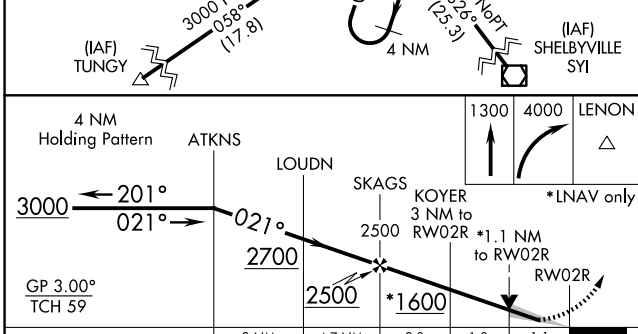
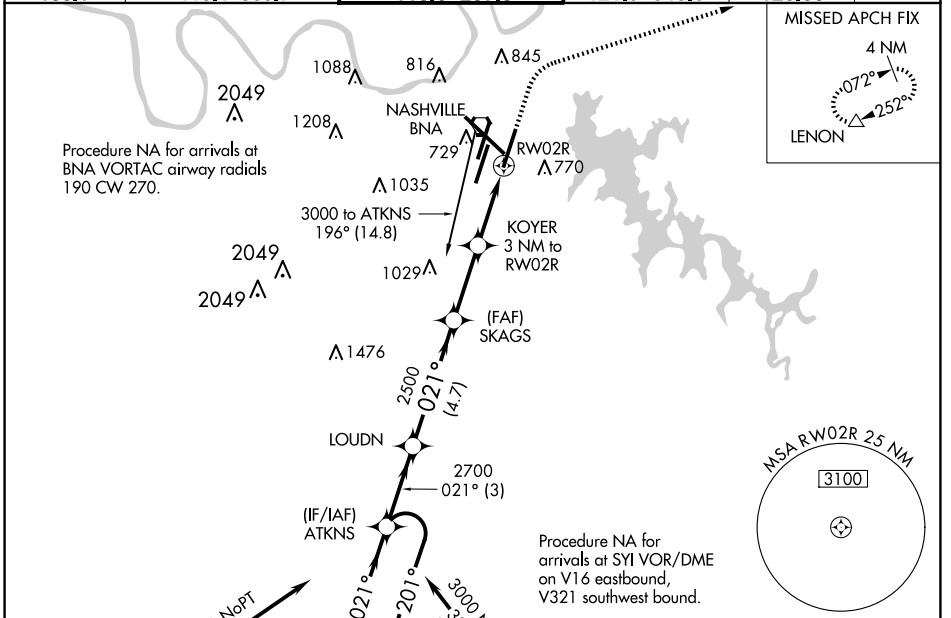


WAAS CH 93713 W02D	APP CRS 021°	Rwy Idg TDZE Apt Elev	8000 590 599
--	------------------------	-----------------------------	---

RNAV (GPS) Y RWY 2R

NASHVILLE INTL (BNA)

RNP APCH.		ALSIF-2		MISSED APPROACH: Climb to 1300 then climbing right turn to 4000 direct LENON and hold.	
<p>For uncompensated Baro-VNAV systems, LNAV/VNAV NA below -11°C or above 54°C. Simultaneous approach authorized with Rwy 2L/C. LNAV procedure NA during simultaneous operations. Use of FD or AP providing RNAV track guidance required during simultaneous operations. For inop ALSIF-2 increase LNAV/VNAV visibility all Cats to RVR 5400.</p>					
D-ATIS 135.1	NASHVILLE APP CON 118.4 360.7	NASHVILLE TOWER 118.6 257.8	GND CON 121.9 348.6	CLNC DEL 126.05	CPDLC



CATEGORY	A	B	C	D
LPV DA		790/18	200 (200-½)	
LNAV/VNAV DA		928/30	338 (400-¾)	
LNAV MDA	1020/24	430 (500-½)	1020/40	430 (500-¾)
CIRCLING	1100-1 501 (600-1)	1120-1 521 (600-1)	1200-1¾ 601 (700-1¾)	1380-2½ 781 (800-2½)

SE-1, 23 JAN 2025 to 20 FEB 2025

SE-1, 23 JAN 2025 to 20 FEB 2025