

APP CRS <b>243°</b>	Rwy Idg TDZE Apt Elev	<b>4886</b> <b>157</b> <b>164</b>
------------------------	-----------------------------	---

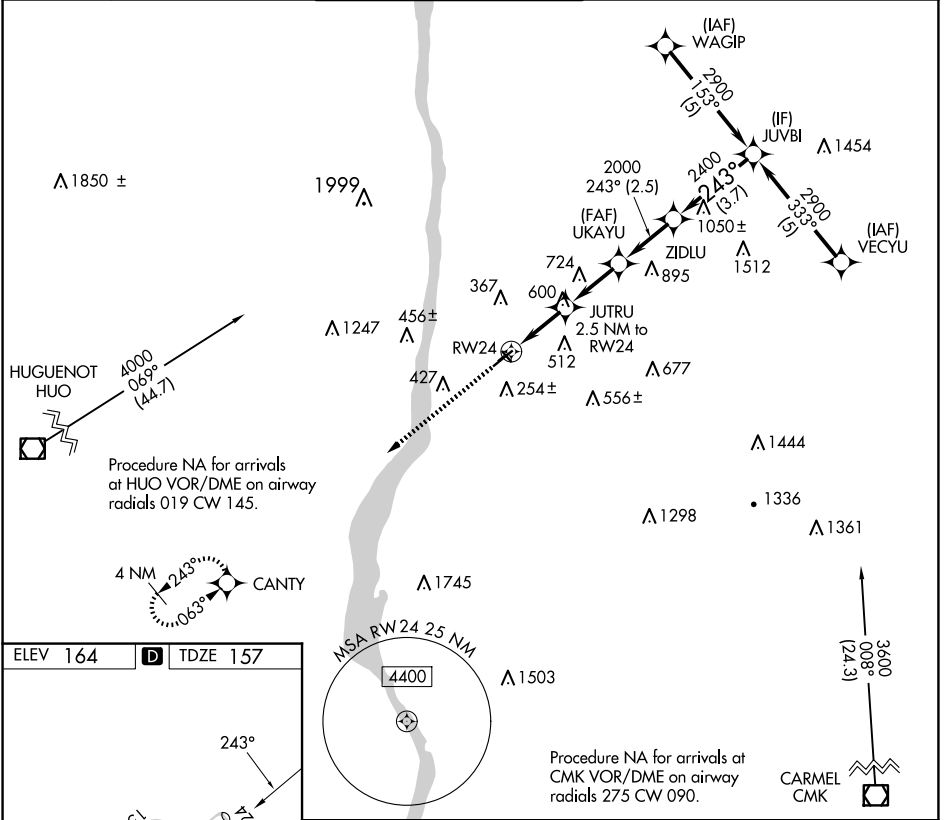
# RNAV (GPS) RWY 24

HUDSON VALLEY RGNL (POU)

**⚠** Circling NA to Rwy 7 and 25. Circling Rwy 15, 33 NA at night. Rwy 24 helicopter visibility reduction below  $\frac{3}{4}$  SM NA. Rwy 15, 33 helicopter visibility reduction below 1 NA. DME/DME RNP-0.3 NA. When local altimeter not received, use Montgomery altimeter setting and increase all MDAs 80 feet and LNAV Cat C and Circling Cats A, B and C visibility  $\frac{1}{4}$  SM.

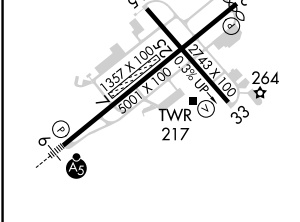
**MISSED APPROACH:**  
Climb to 3200 direct CANTY and hold.

ATIS <b>126.75</b>	NEW YORK APP CON <b>132.75 363.1</b>	DUTCHESS COUNTY TOWER * <b>124.0</b> (CTAF) <b>269.15</b>	GND CON <b>121.8</b>	CLNC DEL <b>121.8</b>	UNICOM <b>122.95</b>
-----------------------	---	--	-------------------------	--------------------------	-------------------------



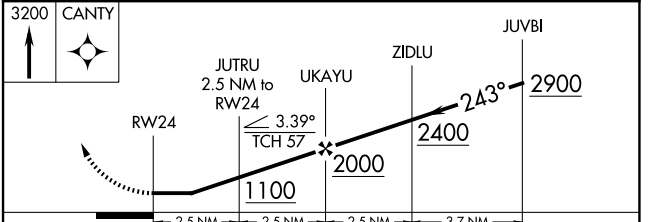
NE-2, 23 JAN 2025 to 20 FEB 2025

NE-2, 23 JAN 2025 to 20 FEB 2025



ELEV 164	<b>D</b>	TDZE 157
----------	----------	----------

MIRL Rwy 15-33  
HIRL Rwy 6-24 **1**  
REIL Rwy 24 **1**  
REIL Rwy 33



CATEGORY	A	B	C	D
LNAV MDA	900-1 743 (800-1)	900-1 $\frac{1}{4}$ 743 (800-1 $\frac{1}{4}$ )	900-2 $\frac{1}{4}$ 743 (800-2 $\frac{1}{4}$ )	900-2 $\frac{1}{2}$ 743 (800-2 $\frac{1}{2}$ )
CIRCLING	900-1 736 (800-1)	900-1 $\frac{1}{4}$ 736 (800-1 $\frac{1}{4}$ )	940-2 $\frac{1}{4}$ 776 (800-2 $\frac{1}{4}$ )	1080-3 916 (1000-3)