

LOC/DME I-NEW <b>111.3</b> Chan 50	APP CRS <b>177°</b>	Rwy Idg <b>5510</b> TDZE <b>8</b> Apt Elev <b>8</b>
--	------------------------	---

# ILS or LOC RWY 18R

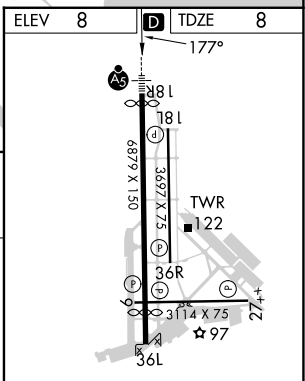
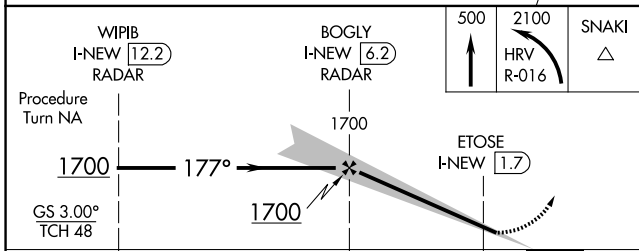
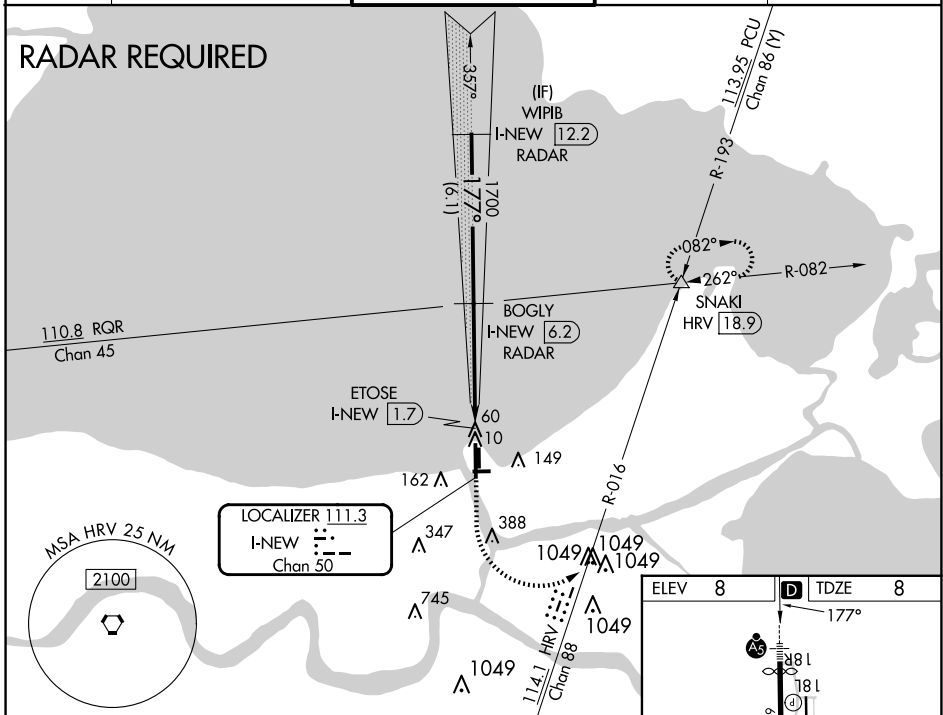
LAKEFRONT (NEW)

**⚠** Inop table does not apply to S-ILS 18R. For inop MALSRL when using Louis Armstrong New Orleans Intl altimeter setting, increase S-LOC 18R Cats A-C visibility to 1 mile. For inop MALSRL, increase S-LOC 18R all Cats visibility to 1 mile. DME or RADAR required. Visibility reduction by helicopters NA. When local altimeter setting not received, use Louis Armstrong New Orleans Intl altimeter setting and increase all DA 29 feet and all MDA 40 feet; increase Circling Cat D visibility ¼ mile.



**MISSED APPROACH:** Climb to 500 then climbing left turn to 2100 on HRV VORTAC R-016 to SNAKI INT and hold.

ATIS <b>124.9</b>	NEW ORLEANS APP CON NORTH <b>133.15 290.3</b> SOUTH <b>123.85 256.9</b>	LAKEFRONT TOWER * <b>118.95 (CTAF) 0</b>	GND CON <b>121.7 335.575</b>	CLNC DEL <b>127.4</b>
----------------------	---	---	---------------------------------	--------------------------



CATEGORY	A	B	C	D	MRL Rwy 18R-36L
S-ILS 18R		258-3/4	250 (300-3/4)		MRL Rwy 9-27 and 18L-36R
S-LOC 18R		320-3/4	312 (400-3/4)		REIL Rwy 9, 18L, 36L and 36R
					FAF to MAP 4.5 NM
CIRCLING	480-1 472 (500-1)	520-1 512 (600-1)	700-2 692 (700-2)	820-2 3/4 812 (900-2 3/4)	
	Knots: 60, 90, 120, 150, 180				
	Min:Sec: 4:30, 3:00, 2:15, 1:48, 1:30				

SC-4, 23 JAN 2025 to 20 FEB 2025

SC-4, 23 JAN 2025 to 20 FEB 2025