

WAAS CH 86913 W36A	APP CRS 357°	Rwy Idg 5135 TDZE 8 Apt Elev 8
--	------------------------	---

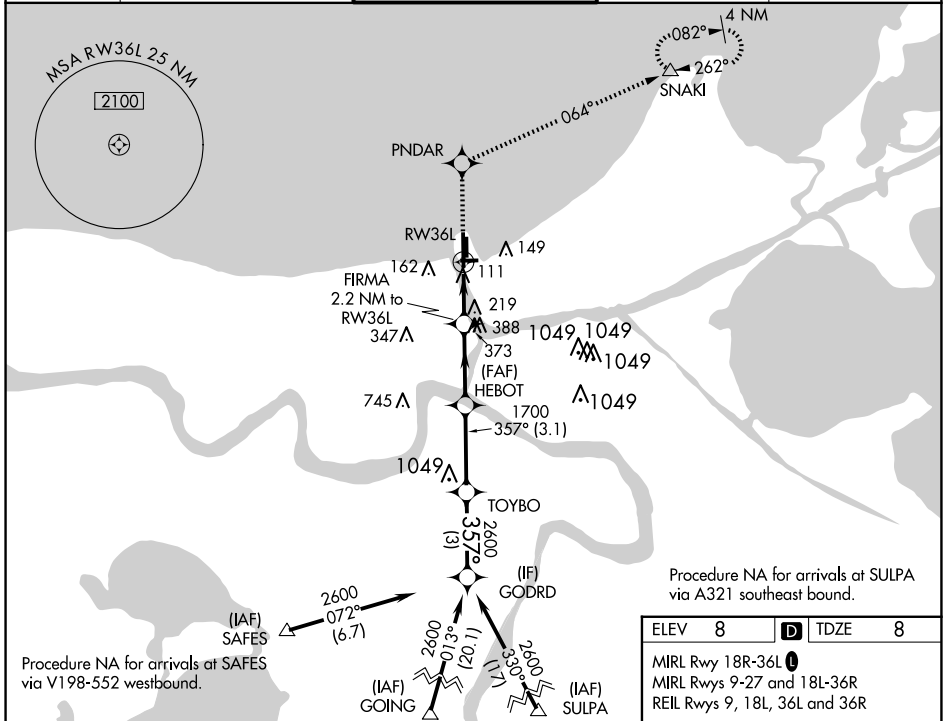
RNAV (GPS) RWY 36L

LAKEFRONT (NEW)

▼ For uncompensated Baro-VNAV systems, LNAV/VNAV NA below -15°C (5°F) or above 49°C (120°F). DME/DME RNP-0.3 NA. When local altimeter setting not received, use Louis Armstrong New Orleans Intl altimeter setting: increase LPV DA to 369 feet, LNAV/VNAV DA to 460 feet and all visibilities ½ mile; increase all MDA 40 feet and Circling Cat D visibility ½ mile. VDP and Baro-VNAV NA when using Louis Armstrong New Orleans Intl altimeter setting.

MISSED APPROACH: Climb to 2100 direct PNDAR and via track 064° to SNAKI and hold.

ATIS 124.9	NEW ORLEANS APP CON NORTH 133.15 290.3 SOUTH 123.85 256.9	LAKEFRONT TOWER * 118.95 (CTAF) 0	GND CON 121.7 335.575	CLNC DEL 127.4
----------------------	---	--	---------------------------------	--------------------------

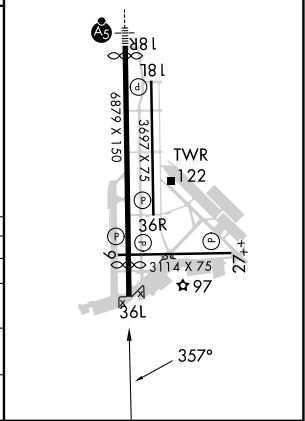


Procedure NA for arrivals at SULPA via A321 southeast bound.

ELEV 8	D TDZE 8
---------------	------------------------

MIRL Rwy 18R-36L
MIRL Rwy 9-27 and 18L-36R
REIL Rwy 9, 18L, 36L and 36R

2100	PNDAR	tr 064°	SNAKI	Procedure Turn NA
*LNAV only.				
CATEGORY	A	B	C	D
LPV DA	340-1 3/8		332 (400-1 1/8)	
LNAV/VNAV DA	431-1 3/8		423 (500-1 3/8)	
LNAV MDA	600-1	592 (600-1)	600-1 3/4	592 (600-1 3/4)
CIRCLING	600-1	592 (600-1)	700-2 692 (700-2)	820-2 3/4 812 (900-2 3/4)



SC-4, 23 JAN 2025 to 20 FEB 2025

SC-4, 23 JAN 2025 to 20 FEB 2025