


LOC/DME I-GDI 108.5 Chan 22	APP CRS 134°	Rwy Idg TDZE 12 Apt Elev 21	7002
---	------------------------	---	-------------

COPTER ILS or LOC RWY 13

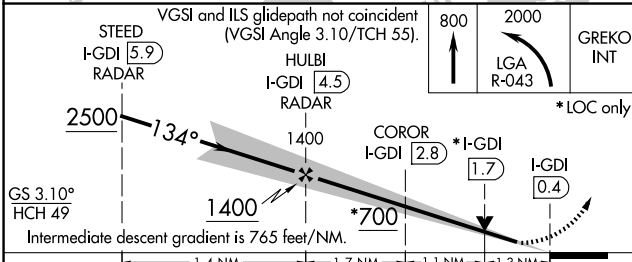
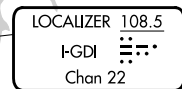
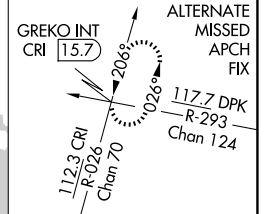
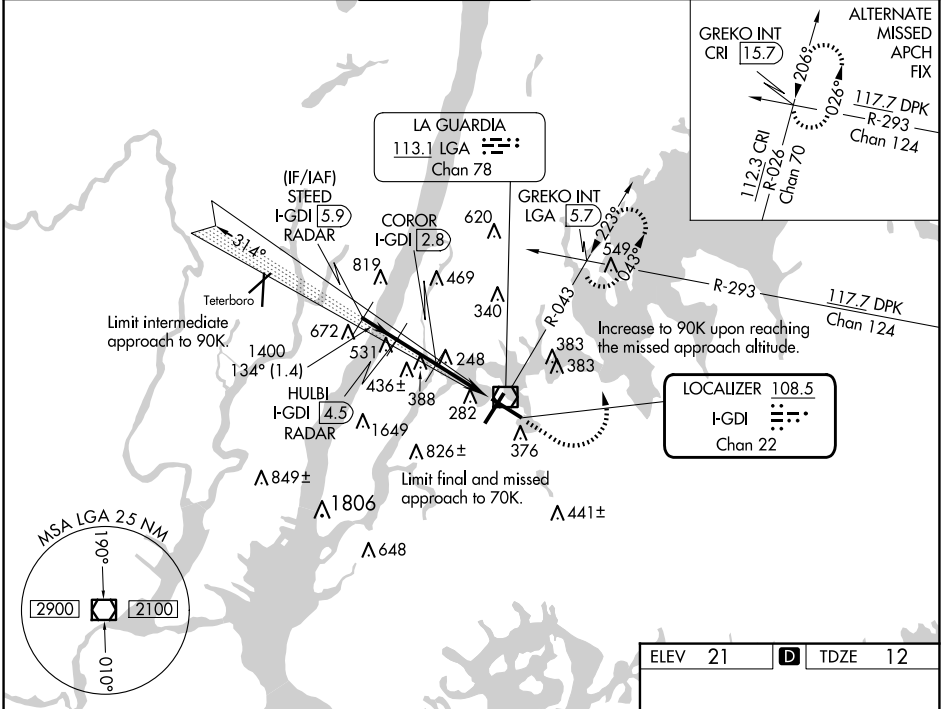
LAGUARDIA (LGA)

RADAR required for procedure entry. DME or RADAR required.

MALSRR 

MISSED APPROACH: Climb to 800 then climbing left turn to 2000 on LGA VOR/DME R-043 to GREKO INT/LGA 5.7 DME and hold, continue climb-in-hold to 2000.

D-ATIS ARR 125.95 D-ATIS DEP 127.05	NEW YORK APP CON 120.8 263.0	LAGUARDIA TOWER 118.7 263.0	GND CON 121.7 263.0	CLNC DEL 135.2 121.875 (COPTER)	CPDLC
--	--	---------------------------------------	-------------------------------	---	-------



ELEV 21	D	TDZE 12
---------	----------	---------

FAF to MAP 4.1 NM					
Knots	45	60	75	90	105
Min:Sec	5:28	4:06	3:17	2:44	2:21

CATEGORY	COPTER			
H-ILS 13	212/12	200 (200-¼)		
H-LOC 13	700/12	688 (700-¼)		
COROR FIX MINIMUMS				
H-LOC 13	500/12	488 (500-¼)		

NE-2, 23 JAN 2025 to 20 FEB 2025

NE-2, 23 JAN 2025 to 20 FEB 2025