

LOC/DME I-URD <b>110.5</b> Chan <b>42</b>	APP CRS <b>224°</b>	Rwy Idg <b>7002</b> TDZE <b>12</b> Apt Elev <b>21</b>
---	------------------------	---

# ILS or LOC RWY 22

LAGUARDIA (LGA)

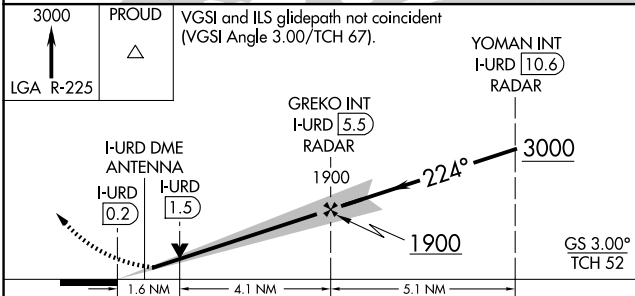
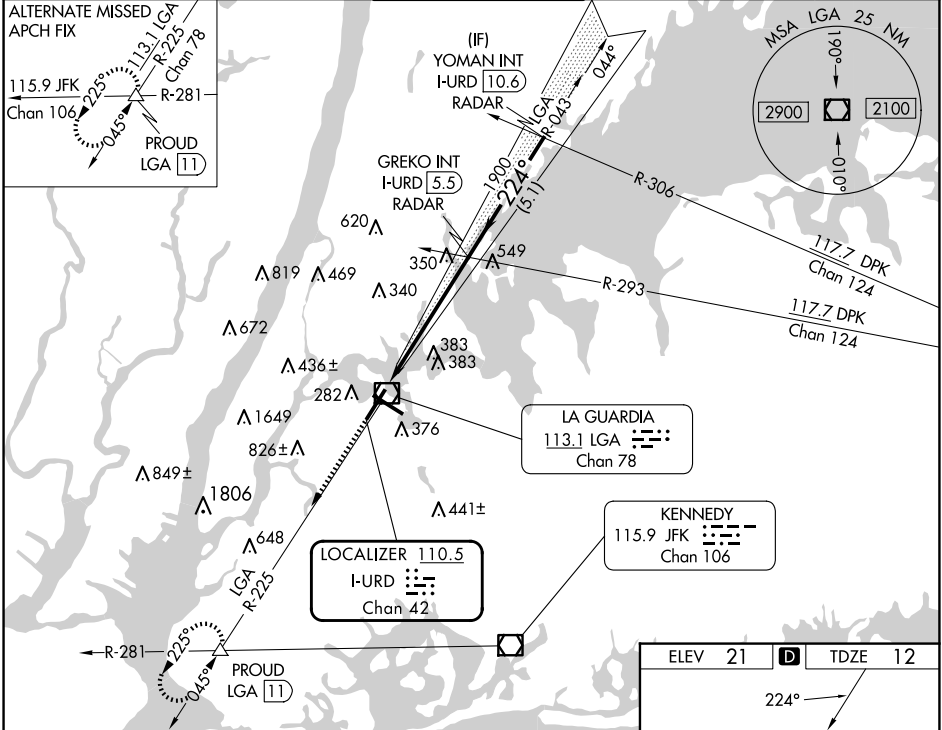
RADAR required for procedure entry. RADAR or DME required for LOC only.

**⚠** Circling NA northwest of Rwy 4 and southwest of Rwy 13.

ALS-F1

MISSED APPROACH: Climb to 3000 on LGA VOR/DME R-225 to PROUD INT/LGA 11 DME and hold, continue climb-in-hold to 3000.

D-ATIS ARR <b>125.95</b>	NEW YORK APP CON D-ATIS DEP <b>127.05</b>	LAGUARDIA TOWER <b>118.7 263.0</b>	GND CON <b>121.7 263.0</b>	CLNC DEL <b>135.2</b>	CPDLC
--------------------------	--	---------------------------------------	-------------------------------	--------------------------	-------



ELEV 21	<b>D</b>	TDZE 12
---------	----------	---------

TDZ/CL Rws 4, 13 and 22  
HIRL Rws 4-22 and 13-31  
REIL Rwy 31

FAF to MAP 5.7 NM					
Knots	60	90	120	150	180
Min:Sec	5:42	3:48	2:51	2:17	1:54

CATEGORY	A	B	C	D
S-ILS 22	212/18 200 (200-½)			
S-LOC 22	600/24 588 (600-½)	600-1¼ 588 (600-1¼)		
<b>C</b> CIRCLING	700-1 679 (700-1)	1080-3 1059 (1100-3)	1260-3 1239 (1300-3)	

NE-2, 23 JAN 2025 to 20 FEB 2025

NE-2, 23 JAN 2025 to 20 FEB 2025