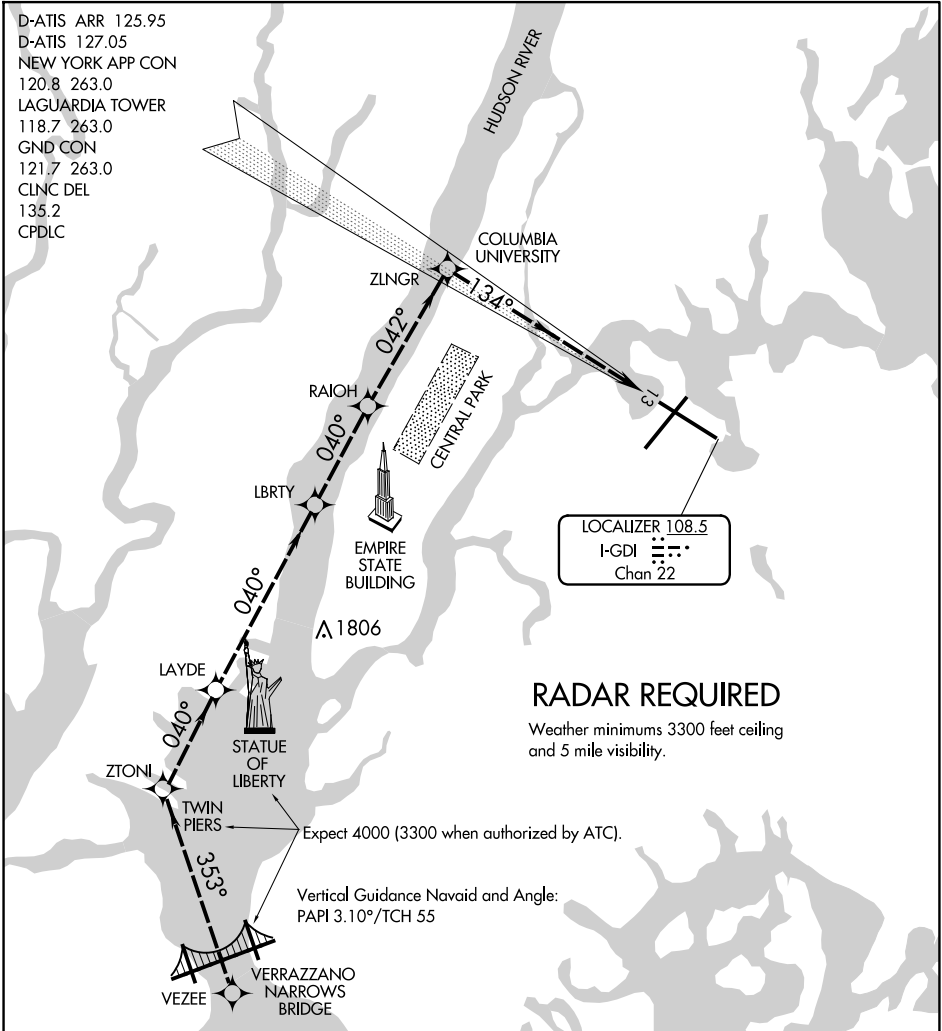


RIVER VISUAL RWY 13

AL-289 (FAA)

LAGUARDIA (LGA)
NEW YORK, NEW YORK

- D-ATIS ARR 125.95
- D-ATIS 127.05
- NEW YORK APP CON 120.8 263.0
- LAGUARDIA TOWER 118.7 263.0
- GND CON 121.7 263.0
- CLNC DEL 135.2
- CPDLC



RADAR REQUIRED

Weather minimums 3300 feet ceiling and 5 mile visibility.

Expect 4000 (3300 when authorized by ATC).

Vertical Guidance Navaid and Angle:
PAPI 3.10°/TCH 55

1 NM	2	3	4	5	6	7	8	9	10	11	12	13	14	15	16
------	---	---	---	---	---	---	---	---	----	----	----	----	----	----	----

RIVER VISUAL RWY 13 APPROACH

When cleared for the RIVER VISUAL RWY 13 approach, remain over the Hudson River until starting the turn to final approach north of Central Park. Expect 4000 until abeam Statue of Liberty (3300 when authorized by ATC).

NE-2, 23 JAN 2025 to 20 FEB 2025

NE-2, 23 JAN 2025 to 20 FEB 2025

RIVER VISUAL RWY 13

40°47'N-73°52'W

NEW YORK, NEW YORK
LAGUARDIA (LGA)