

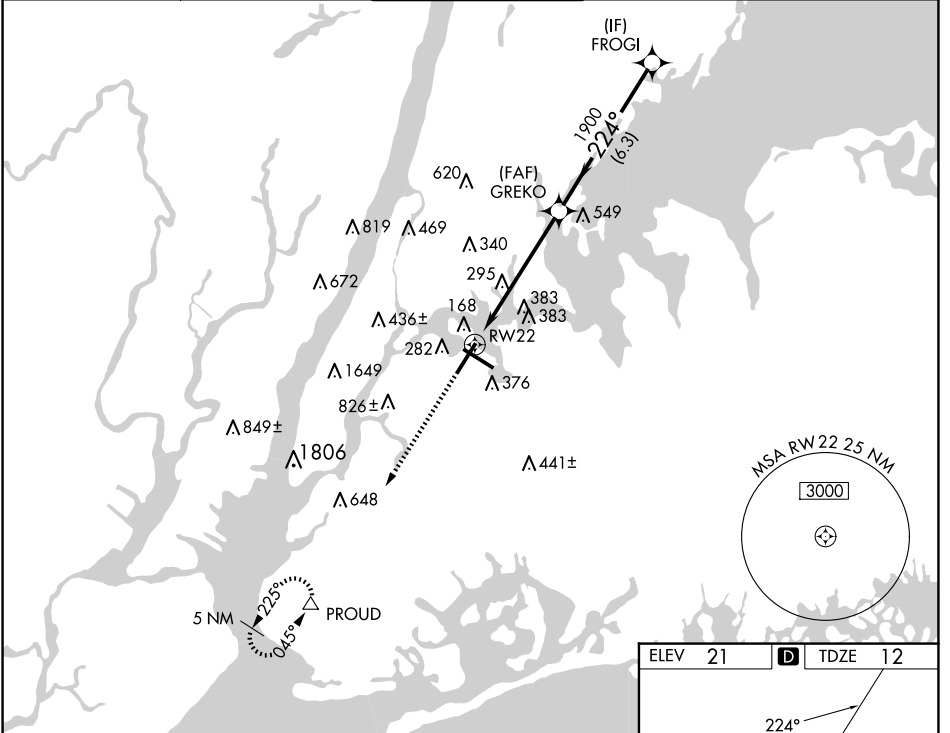
WAAS CH 70318 W22A	APP CRS 224°	Rwy Idg TDZE 12 Apt Elev 21	7002
--	------------------------	---	-------------

RNAV (GPS) Y RWY 22

LAGUARDIA (LGA)

RNP APCH - GPS.		ALSF-1		MISSED APPROACH: Climb to 3000 direct PROUD and hold, continue climb-in-hold to 3000.	
For uncompensated Baro-VNAV systems, LNAV/VNAV NA below -11°C or above 54°C. Circling NA northwest of Rwy 4 and southwest of Rwy 13.					

D-ATIS ARR 125.95	NEW YORK APP CON D-ATIS DEP 127.05	120.8 263.0	LAGUARDIA TOWER 118.7 263.0	GND CON 121.7 263.0	CLNC DEL 135.2	CPDLC
--------------------------	--	--------------------	---------------------------------------	-------------------------------	--------------------------	-------



NE-2, 23 JAN 2025 to 20 FEB 2025

NE-2, 23 JAN 2025 to 20 FEB 2025

3000	PROUD	VGSI and RNAV glidepath not coincident (VGSI Angle 3.00/TCH 67).			
		FROGI			
		1.6 NM to RW22	GREKO 1900	3000	
		1.6 NM	4.1 NM	6.3 NM	GP 3.00° TCH 52
CATEGORY	A	B	C	D	
LPV DA	262/24		250 (300-½)		
LNAV/VNAV DA	527/60		515 (600-1¼)		
LNAV MDA	580/24	568 (600-½)		580/60	568 (600-1¼)
CIRCLING	700-1	679 (700-1)		1080-3	1260-3
				1059 (1100-3)	1239 (1300-3)

