

APP CRS	Rwy Idg	<b>7002</b>
<b>313°</b>	TDZE	<b>7</b>
	Apt Elev	<b>21</b>

# RNAV (GPS) Y RWY 31

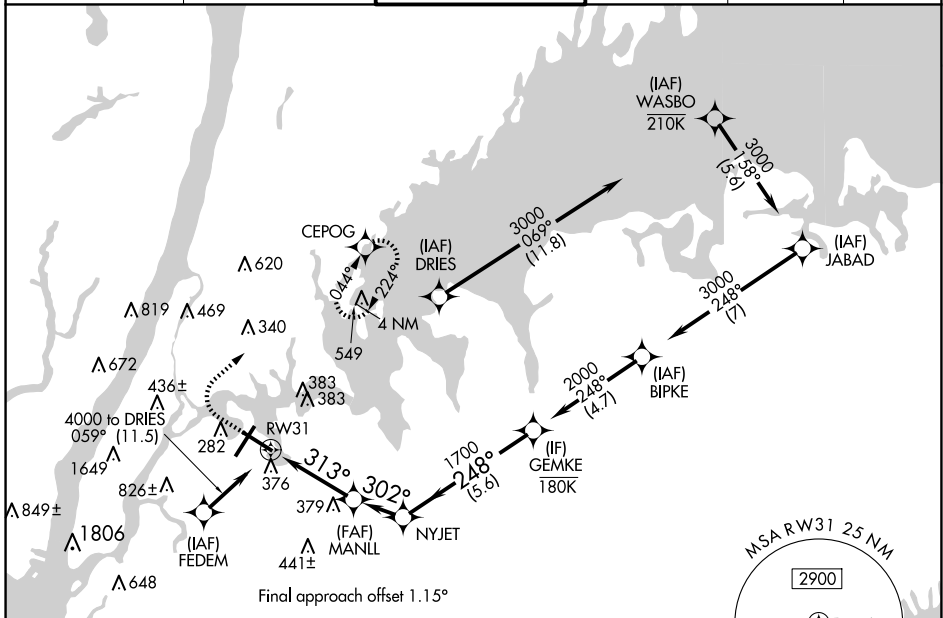
LAGUARDIA (LGA)

RNP APCH - GPS.

**▼** Rwy 31 helicopter visibility reduction below 1 SM NA. For uncompensated Baro-VNAV systems, LNAV/VNAV NA below -12°C or above 48°C. Circling NA northwest of Rwy 4 and southwest of Rwy 13.

**MISSED APPROACH:** (Do not exceed 220K until CEPOG) Climb to 700 then climbing right turn to 2000 direct CEPOG and hold.

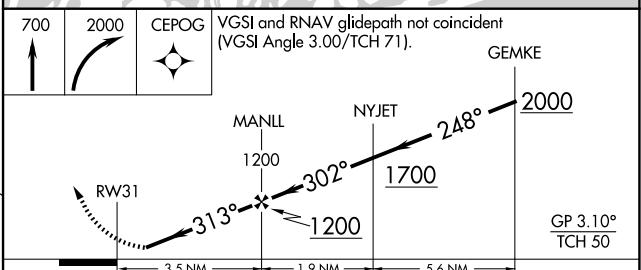
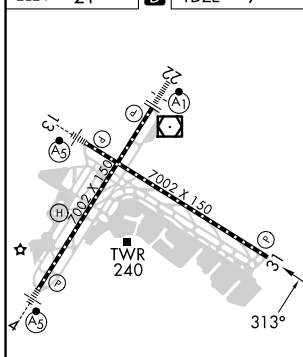
D-ATIS ARR	<b>125.95</b>	NEW YORK APP CON	<b>120.8 263.0</b>	LAGUARDIA TOWER	<b>118.7 263.0</b>	GND CON	<b>121.7 263.0</b>	CLNC DEL	<b>135.2</b>	CPDLC
D-ATIS DEP	<b>127.05</b>									



NE-2, 23 JAN 2025 to 20 FEB 2025

NE-2, 23 JAN 2025 to 20 FEB 2025

ELEV	<b>21</b>	<b>D</b>	TDZE	<b>7</b>
------	-----------	----------	------	----------



CATEGORY	A	B	C	D
LNAV/ DA VNAV		618-1¾	611 (600-1¾)	
LNAV MDA	640/55	633 (700-1)	640-1¾	633 (700-1¾)
<b>C</b> CIRCLING	700-1	679 (700-1)	1080-3 1059 (1100-3)	NA