

WAAS CH <b>48928</b> <b>W31A</b>	APP CRS <b>314°</b>	Rwy Idg <b>7002</b> TDZE <b>7</b> Apt Elev <b>21</b>
--	------------------------	--

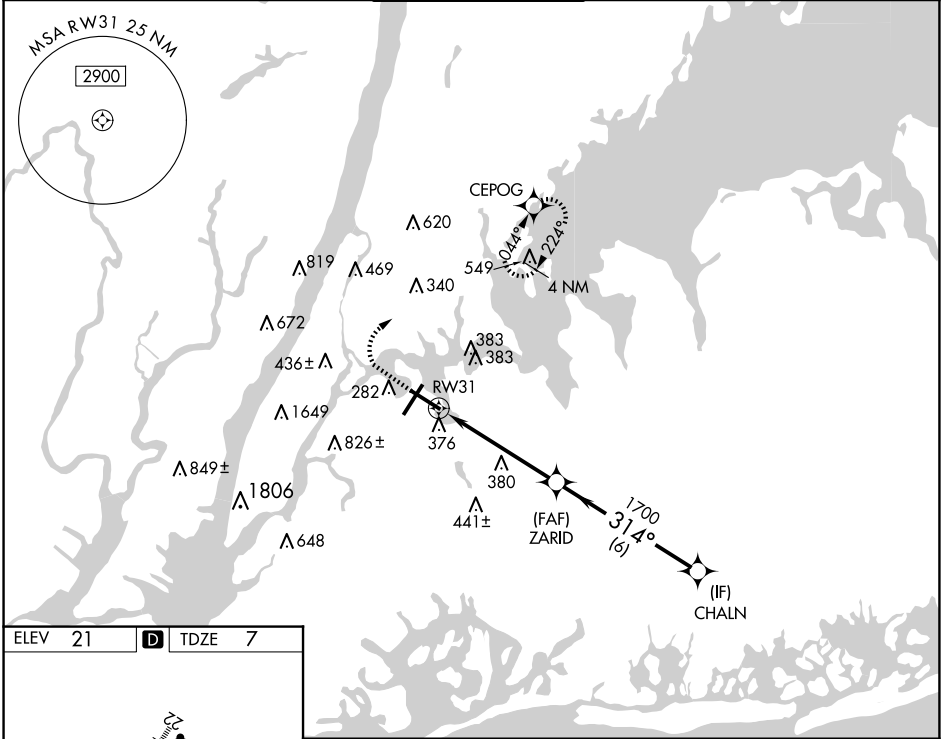
# RNAV (GPS) Z RWY 31

LAGUARDIA (LGA)

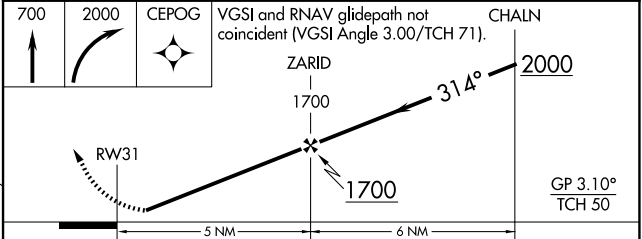
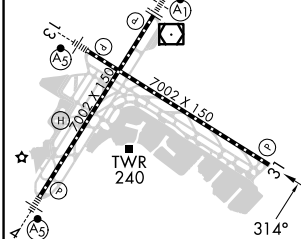
RNP APCH - GPS.  
 ▼ Rwy 31 helicopter visibility reduction below RVR 5000 NA. For uncompensated Baro-VNAV systems, LNAV/VNAV NA below -12°C or above 48°C. Circling NA northwest of Rwy 4 and southwest of Rwy 13.

MISSED APPROACH: (Do not exceed 220K until CEPOG) Climb to 700 then climbing right turn to 2000 direct CEPOG and hold.

D-ATIS ARR <b>125.95</b>	NEW YORK APP CON <b>120.8 263.0</b>	LAGUARDIA TOWER <b>118.7 263.0</b>	GND CON <b>121.7 263.0</b>	CLNC DEL <b>135.2</b>	CPDLC
D-ATIS DEP <b>127.05</b>					



ELEV 21	<b>D</b>	TDZE 7
---------	----------	--------



CATEGORY	A	B	C	D
LPV DA		330/50	323 (400-1)	
LNAV/VNAV DA		618-1¼	611 (600-1¼)	
LNAV MDA	640/55	633 (700-1)	640-1¼	633 (700-1¼)
<b>C</b> CIRCLING	700-1	679 (700-1)	1080-3 1059 (1100-3)	1260-3 1239 (1300-3)

TDZ/CL Rwsy 4, 13 and 22  
 HIRL Rwsy 4-22 and 13-31  
 REIL Rwy 31

NE-2, 23 JAN 2025 to 20 FEB 2025

NE-2, 23 JAN 2025 to 20 FEB 2025