

NORFOLK, VIRGINIA

ILS or LOC/DME RWY 10

LOC I-NGU 108.95	APCH CRS 101°	Rwy ldg 8071 TDZE 14 Arprt Elev 15
----------------------------	-------------------------	---

[USN]

NORFOLK NS (CHAMBERS FLD) (KNGU)

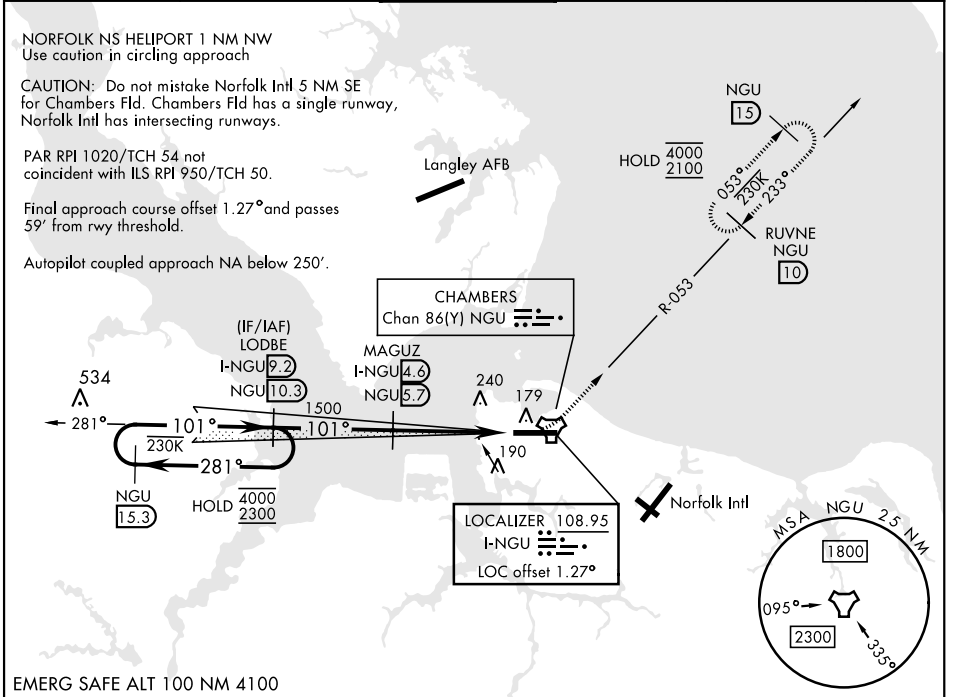
TACAN required

▼ * When ALS inop, increase vis to ¾ mile.
 ** When ALS inop, increase CAT AB vis to 1 mile, CAT CDE vis to 1 ¼ miles.
 *** Circling not authorized S of Rwy 10-28.



MISSED APPROACH: Climbing left turn to 2100 via NGU TACAN R-053 to RUVNE and hold.

ATIS 118.425 338.225	APP CON 118.9 273.475	CHAMBERS TOWER 124.3 379.15	GND CON 121.8 370.85	CLNC DEL 120.7 339.8	ASR/PAR
--------------------------------	---------------------------------	---------------------------------------	--------------------------------	--------------------------------	---------



NE-3, 23 JAN 2025 to 20 FEB 2025

NE-3, 23 JAN 2025 to 20 FEB 2025

EMERG SAFE ALT 100 NM 4100

VGSi and ILS glidepath not coincident (VGSi Angle 3.00/TCH 35).					ELEV 15	TDZE 14
					Rwy 10 ldg 8071' Rwy 28 ldg 7375'	
CATEGORY	A	B	C	D		
S-ILS 10 *	264-½		250	(300-½)		HIRL Rwy 10-28 REIL Rwy 10-28 TDZL/CL Rwy 10-28
S-LOC 10 **	440-½	426 (500-½)	440-¾	426 (500-¾)		
CIRCLING ***	480-1 465 (500-1)	540-1 525 (600-1)	540-1½ 525 (600-1½)	580-2	565 (600-2)	

NORFOLK, VIRGINIA

36° 56' N-76° 17' W

NORFOLK NS (CHAMBERS FLD) (KNGU)

Amtd 2 22FEB24

ILS or LOC/DME RWY 10