

HI-ILS or LOC RWY 25

LOC I-PMD 110.7	APCH CRS 254°	Rwy Idg 12,002 TDZE 2503 Arpt Elev 2543
---------------------------	-------------------------	--

AL-310 [USAF]

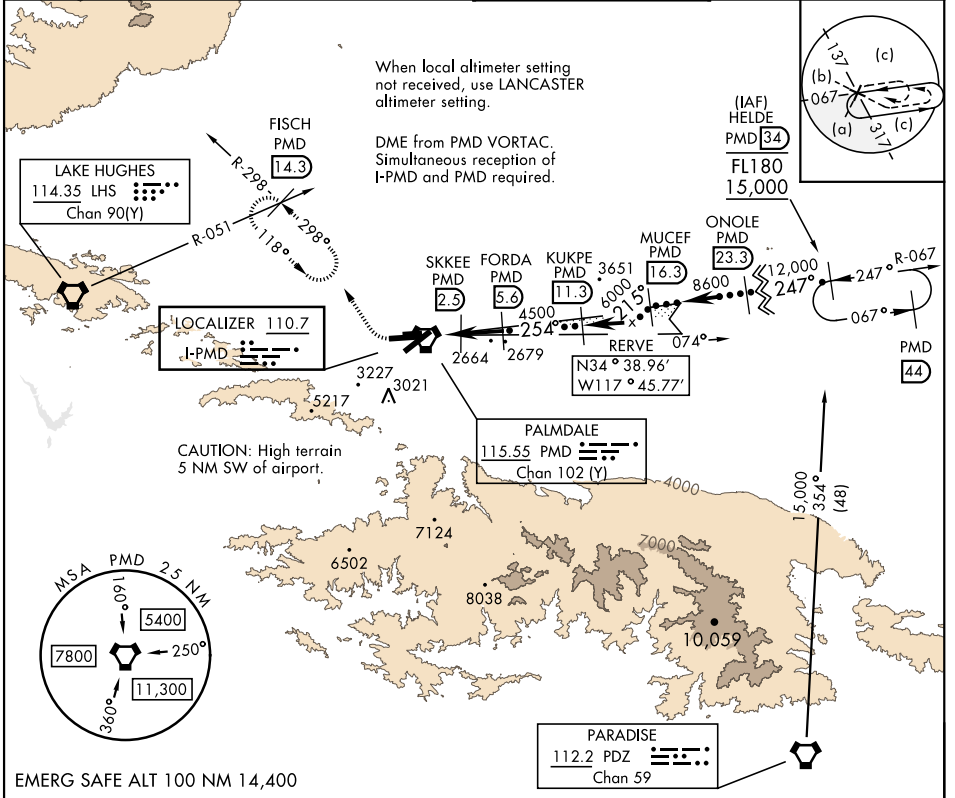
PALMDALE USAF PLANT 42 (KPMD)

DME required.

▲ * Circling NA south of Rws 4 and 25.

MISSED APPROACH: Climb to 3000 then climbing right turn on heading 318° and PMD VORTAC R-298 to FISCH INT/PMD 14.3 DME/RADAR and hold, continue climb-in-hold to 6700.

ATIS 118.275	JOSHUA APP CON 124.55 363.0	TOWER* 123.7 (CTAF) 317.6	GND CON 121.9 317.6
------------------------	---------------------------------------	-------------------------------------	-------------------------------



SW-3, 23 JAN 2025 to 20 FEB 2025

SW-3, 23 JAN 2025 to 20 FEB 2025

3000	6700	PMD R-298	ELEV 2543	TDZE 2503												
VGS1 and descent angles not coincident.			ASSAULT STRIP													
CATEGORY	C	D	E													
S-ILS 25	2703-¾	200 (200-¾)	HIRL Rwy 4-22, 7-25													
S-LOC 25	2820-7/8	317 (300-7/8)	REIL Rwy 4, 22, 7, 25													
CIRCLING*	3140-1½ 597 (600-1½)	3740-3 1197 (1200-3)	FAF to MAP 6.1 NM													
		3760-3 1217 (1300-3)	<table border="1"> <tr> <td>Knots</td> <td>60</td> <td>90</td> <td>120</td> <td>150</td> <td>180</td> </tr> <tr> <td>Min:Sec</td> <td>6:06</td> <td>4:04</td> <td>3:03</td> <td>2:26</td> <td>2:02</td> </tr> </table>		Knots	60	90	120	150	180	Min:Sec	6:06	4:04	3:03	2:26	2:02
Knots	60	90	120	150	180											
Min:Sec	6:06	4:04	3:03	2:26	2:02											

HI-ILS or LOC RWY 25