

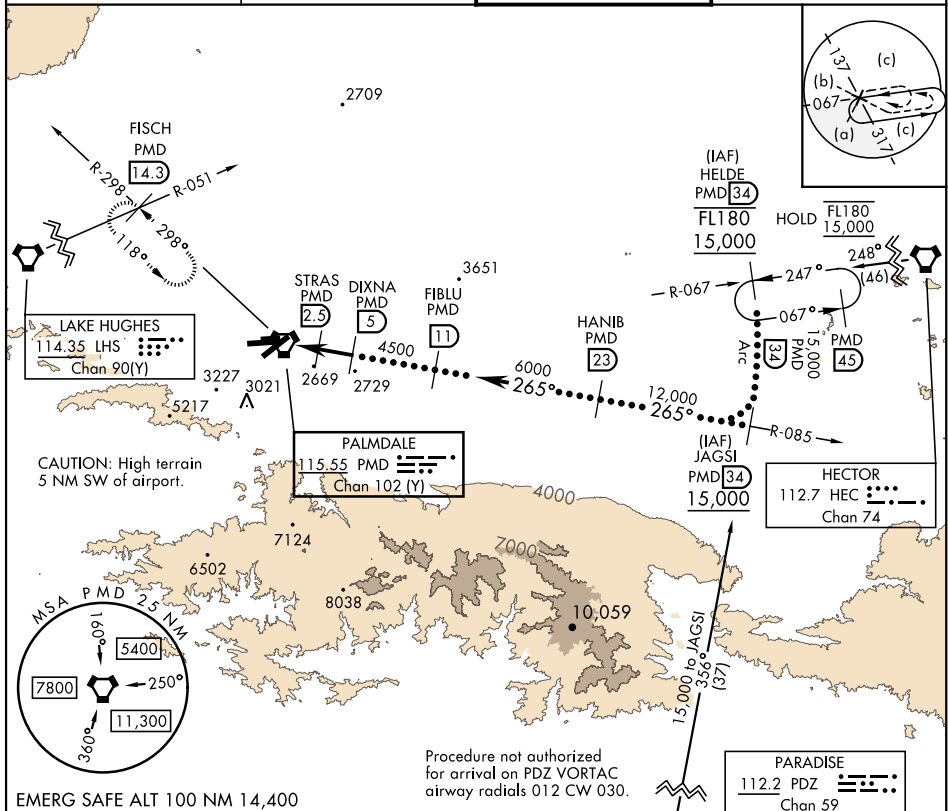
TACAN PMD Chan 102 (Y)	APCH CRS 265°	Rwy Idg 12,002 TDZE 2503 Arprt Elev 2543
----------------------------------	-------------------------	---

AL-310 [USAF]

PALMDALE USAF PLANT 42 (KPMDD)

▽ * Circling NA S of Rwy 4 and 25.
▲ MISSED APPROACH: Climb to 3000 then climbing right turn to 6700 on heading 318° on PMD VORTAC R-298 to FISCH INT/PMD 14.3 DME/RADAR and hold, continue climb-in-hold to 6700.

ATIS 118.275	JOSHUA APP CON 124.55 363.0	TOWER★ 123.7 (CTAF) 0 317.6	GND CON 121.9 317.6
------------------------	---------------------------------------	---------------------------------------	-------------------------------



SW-3, 23 JAN 2025 to 20 FEB 2025

SW-3, 23 JAN 2025 to 20 FEB 2025

3000	6700	VGS1 and descent angles not coincident.	
↑		Hdg 318°	
VORTAC	STRAS (2.5)	DIXNA (5)	HANIB (23)
EKOTY (0.3)	3500	4500	6000
0.8	2.2 NM	2.5 NM	
JAGSI R-085 (34)	12,000	15,000	FL180 (15,000)
ARC (34)			
EMERG SAFE ALT 100 NM 14,400			
Procedure not authorized for arrival on PDZ VORTAC airway radials 012 CW 030.			
PARADISE 112.2 PDZ Chan 59			
CAUTION: High terrain 5 NM SW of airport.			
LAKE HUGHES 114.35 LHS Chan 90(Y)			
PALMDALE 115.55 PMD Chan 102 (Y)			
FISCH PMD 14.3			
MISA PMD 2.5 NM			
MSA: 7800, 5400, 11,300			

ELEV 2543	TDZE 2503
ASSAULT STRIP	
TWR 2626	
HIRL Rwy 4-22, 7-25 0	
REIL Rwy 4, 22, 7, 25 0	