

WAAS CH <b>53441</b> <b>W07A</b>	APP CRS <b>077°</b>	Rwy ldg <b>12002</b> TDZE <b>2540</b> Apt Elev <b>2543</b>
--	------------------------	--

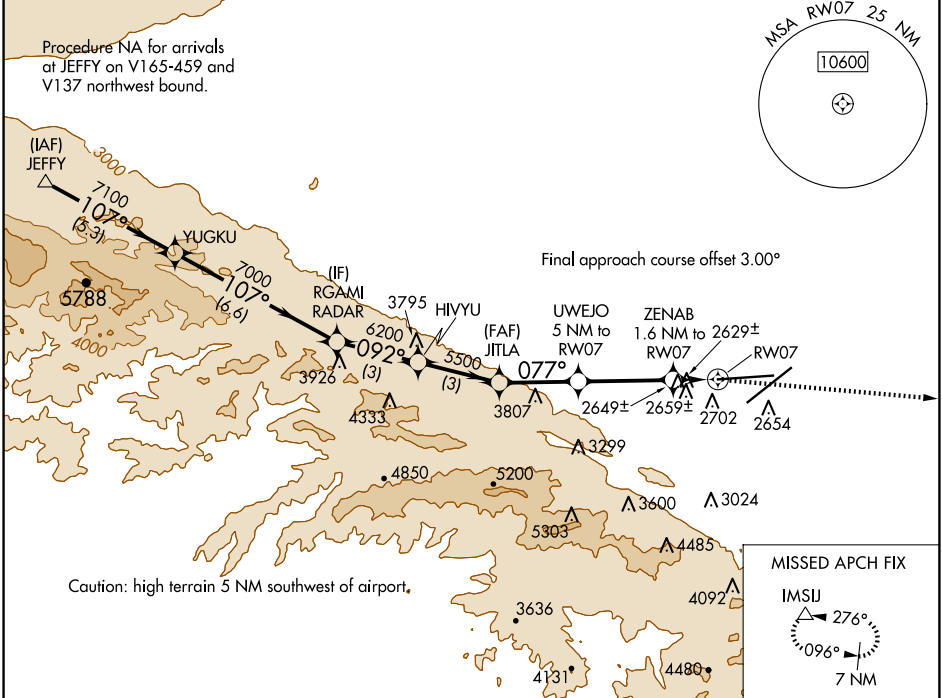
# RNAV (GPS) RWY 7

PALMDALE USAF PLANT 42 (PMD)

RNP APCH.  
 Circling NA for Cats C and D south of Rws 4 and 25.

MISSED APPROACH: Climbing right turn to 7000 direct IMSJ and hold.

ATIS <b>118.275</b>	JOSHUA APP CON <b>124.55 363.0</b>	PALMDALE TOWER * <b>123.7 (CTAF) 0 317.6</b>	GND CON <b>121.9 317.6</b>
------------------------	---------------------------------------	---	-------------------------------



SW-3, 23 JAN 2025 to 20 FEB 2025

SW-3, 23 JAN 2025 to 20 FEB 2025

JEFFY	YUGKU	RGAMI	HIVYU	JITLA	UWEJO	ZENAB	IMSJ
8000	7100	7000	6200	5500	4440	3180	7000
-5.3 NM		-6.6 NM		3 NM	3 NM	2.8 NM	3.4 NM
				-0.8 NM			-0.8 NM

VGSI and descent angles not coincident (VGSI Angle 3.00/TCH 78).

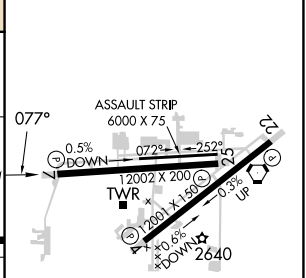
5 NM to 1.6 NM to RW07

1.6 NM to 0.8 NM to RW07

3.50° TCH 50

ELEV 2543	TDZE 2540
-----------	-----------

CATEGORY	A	B	C	D
LP MDA	2880-1 340 (400-1)			
LNAV MDA	2920-1 380 (400-1)			
CIRCLING	3020-1 477 (500-1)	3060-1 517 (600-1)	3140-1½ 597 (600-1½)	3740-3 1197 (1200-3)



REIL Rws 4, 7, 22 and 25

HIRL Rws 4-22 and 7-25