

PATUXENT RIVER, MARYLAND

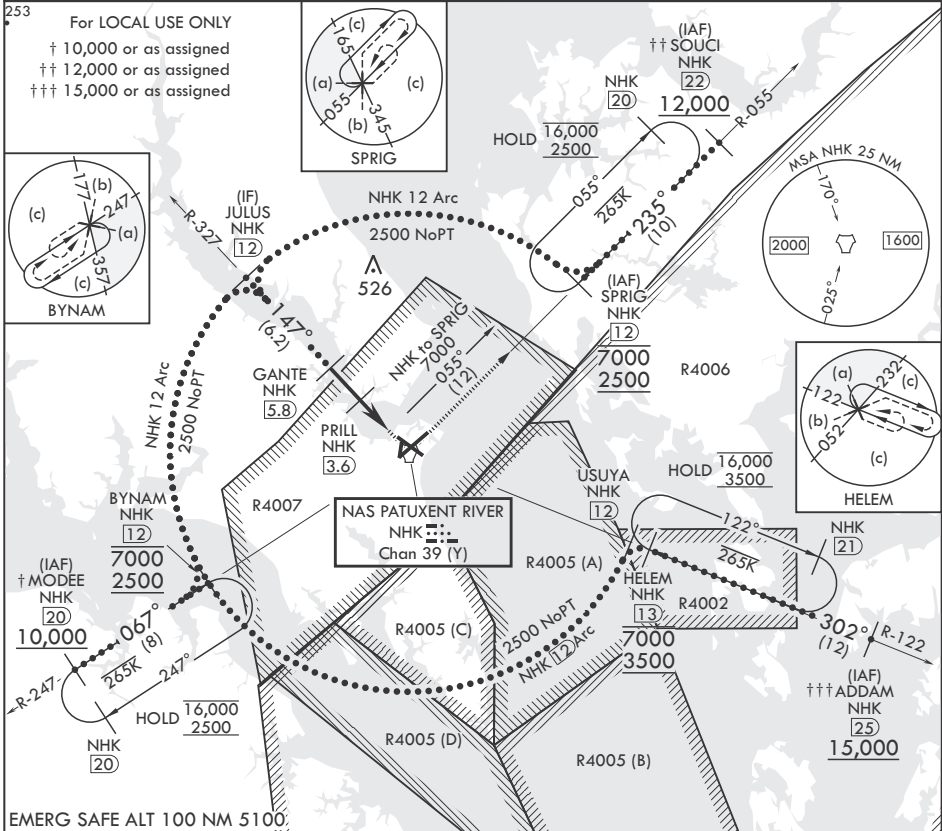
# HI-TACAN Y RWY 14

TACAN NHK Chan 39 (Y)	APCH CRS 147°	Rwy ldg TDZE 27 Arpt Elev 39	9732
-----------------------	---------------	---------------------------------	------

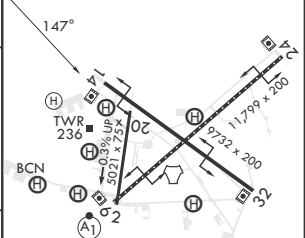
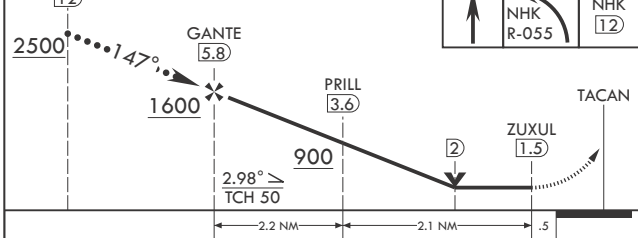
(-USN) PATUXENT RIVER NAS (TRAPNELL FLD) (KNHK)

**▽** MISSED APPROACH: Climb to 500, then climbing left turn to 2500 on NHK TACAN R-055 to SPRIG and hold.

ATIS 322.425	APP CON/DEP CON* 121.0 250.3	TOWER 123.7 343.65	GND CON 120.6 336.4	CLNC DEL 135.2 316.125	ASR/PAR
--------------	------------------------------	--------------------	---------------------	------------------------	---------



EMERG SAFE ALT 100 NM 5100. JULUS 12, GANTE 5.8, PRILL 3.6, TACAN, SPRIG NHK 12, TDZE 27, ELEV 39



CATEGORY	C	D	E
S-14	400-1	373	(400-1)
<b>C</b> CIRCLING	620-1½ 581 (600-1½)	680-2 641 (700-2)	800-2¾ 761 (800-2¾)

HIRL Rwy 6-24, 14-32  
 TDZL/CL Rwy 6

PATUXENT RIVER, MARYLAND

38°17'N - 76°25'W PATUXENT RIVER NAS (TRAPNELL FLD) (KNHK)

Orig 02DEC21

# HI-TACAN Y RWY 14

NE-3, 23 JAN 2025 to 20 FEB 2025

NE-3, 23 JAN 2025 to 20 FEB 2025