

PATUXENT RIVER, MARYLAND

# HI-TACAN Y RWY 6

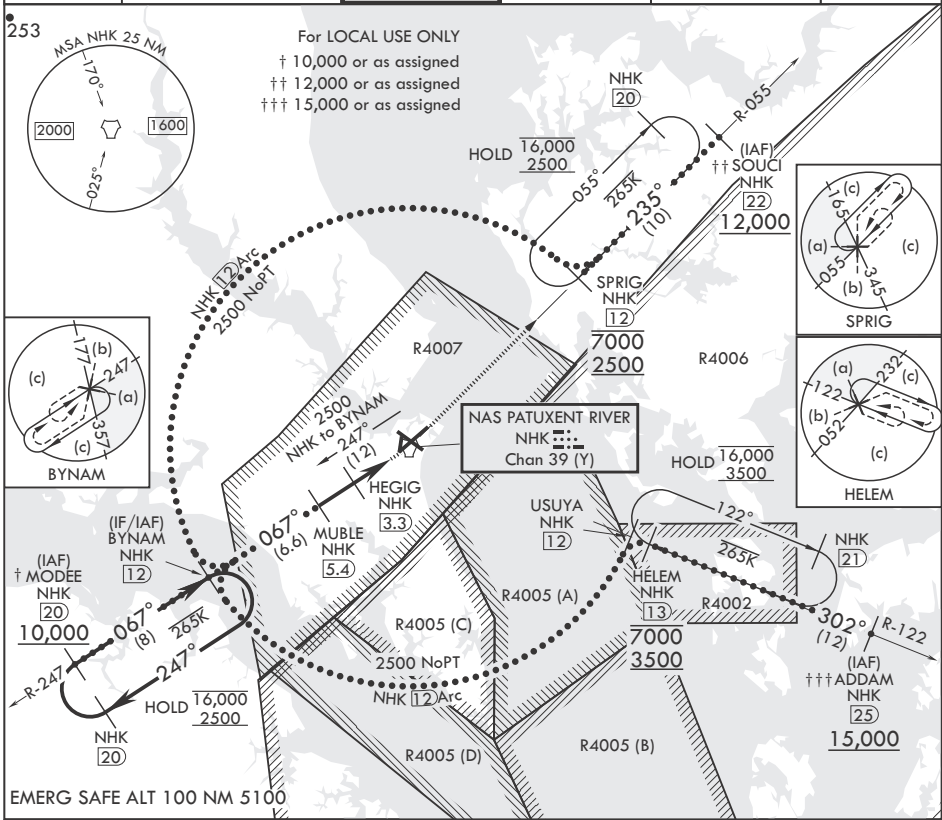
TACAN NHK Chan 39 (Y)	APCH CRS 067°	Rwy ldg TDZE 11,799 39	Arprt Elev 39
-----------------------	---------------	------------------------	---------------

- (USN) PATUXENT RIVER NAS (TRAPNELL FLD) (KNHK)

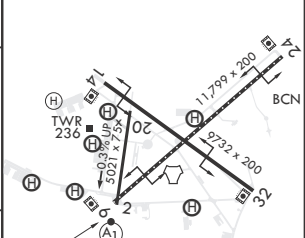
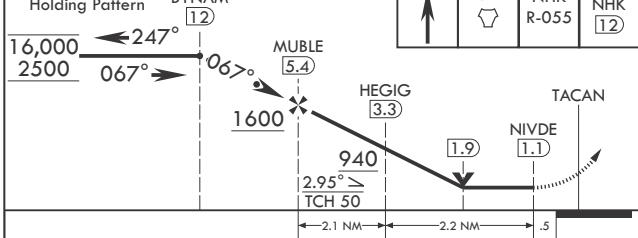
▼ \* When ALS inop, increase CAT CDE vis to 1 3/8 miles.

ALSF-1 MISSED APPROACH: Climb to 2500 direct NHK TACAN and NHK R-055 to SPRIG and hold.

ATIS 322.425	APP CON/DEP CON* 121.0 250.3	TOWER 123.7 343.65	GND CON 120.6 336.4	CLNC DEL 135.2 316.125	ASR/PAR
--------------	------------------------------	--------------------	---------------------	------------------------	---------



8NM Holding Pattern	BYNAM 12	2500	NHK	NHK R-055	SPRIG NHK 12	ELEV 39	TDZE 39
---------------------	----------	------	-----	-----------	--------------	---------	---------



CATEGORY	C	D	E
S-6*	520-1	481	(500-1)
◻ CIRCLING	620-1½ 581 (600-1½)	680-2 641 (700-2)	800-2¾ 761 (800-2¾)

HIRL Rwy 6-24, 14-32  
 TDZL/CL Rwy 6

PATUXENT RIVER, MARYLAND 38°17'N - 76°25'W PATUXENT RIVER NAS (TRAPNELL FLD) (KNHK)

# HI-TACAN Y RWY 6



NE-3, 23 JAN 2025 to 20 FEB 2025

NE-3, 23 JAN 2025 to 20 FEB 2025