

PATUXENT RIVER, MARYLAND

ILS or LOC/DME RWY 6

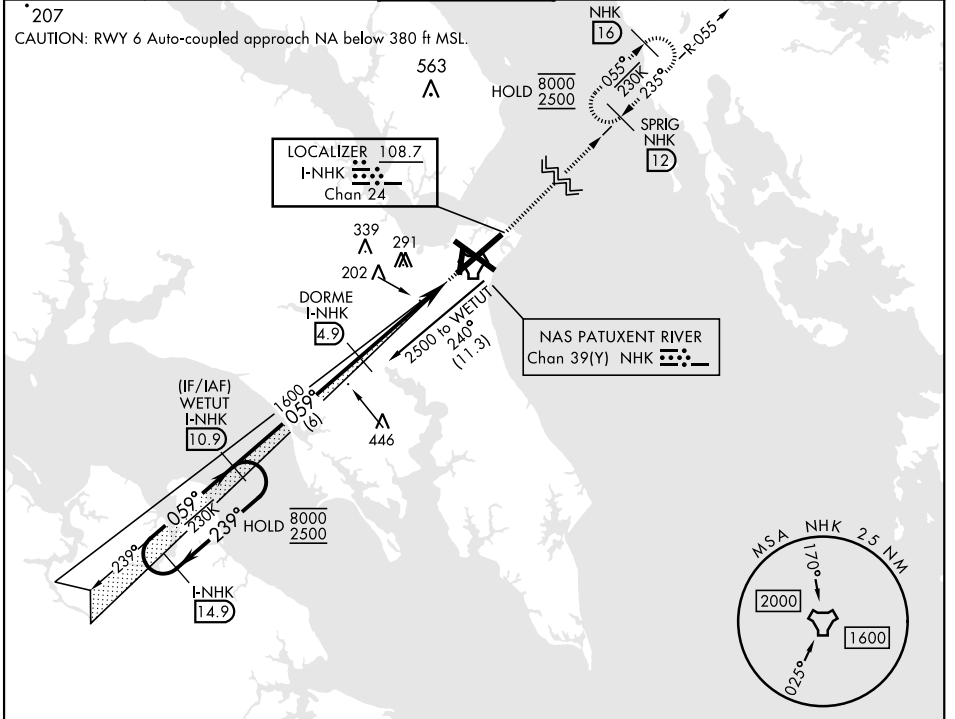
LOC/DME I-NHK 108.7 Chan 24	APCH CRS 059°	Rwy ldg 11,799 TDZE 39 Arprt Elev 39
---	-------------------------	---

[USN]

PATUXENT RIVER NAS (TRAPNELL FIELD) (KNHK)

▼ * When ALS inop, increase vis to 3/4 mile. ** When ALS inop, increase CAT AB vis to 1 mile; CAT CD vis to 1 3/8 miles.	ALS-F-1 (A1)	MISSED APPROACH: Climb to 2500 heading 059° and intercept NHK TACAN R-055 to SPRIG and hold.
--	------------------------	--

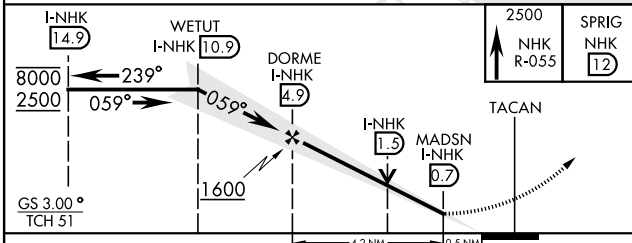
ATIS 322.425	APP/DEP CON * 121.0 250.3	TOWER 123.7 343.65	GND CON 120.6 336.4	CLNC DEL 135.2 316.125	ASR/PAR
------------------------	-------------------------------------	------------------------------	-------------------------------	----------------------------------	---------



NE-3, 23 JAN 2025 to 20 FEB 2025

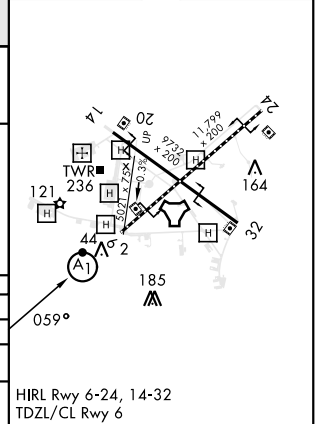
NE-3, 23 JAN 2025 to 20 FEB 2025

EMERG SAFE ALT 100 NM 5100



ELEV	39	TDZE	39
------	----	------	----

CATEGORY	A	B	C	D
S-ILS 6 *	239-1/2 200 (200-1/2)			
S-LOC 6 **	500-1/2 461	(500-1/2)	500-1 461	(500-1)
CIRCLING	560-1	600-1	620-1 1/2	680-2
	521 (600-1)	561 (600-1)	581 (600-1 1/2)	641 (700-2)



PATUXENT RIVER, MARYLAND 38° 17' N-76° 25' W PATUXENT RIVER NAS (TRAPNELL FIELD) (KNHK)

Orig 02DEC21

ILS or LOC/DME RWY 6