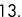


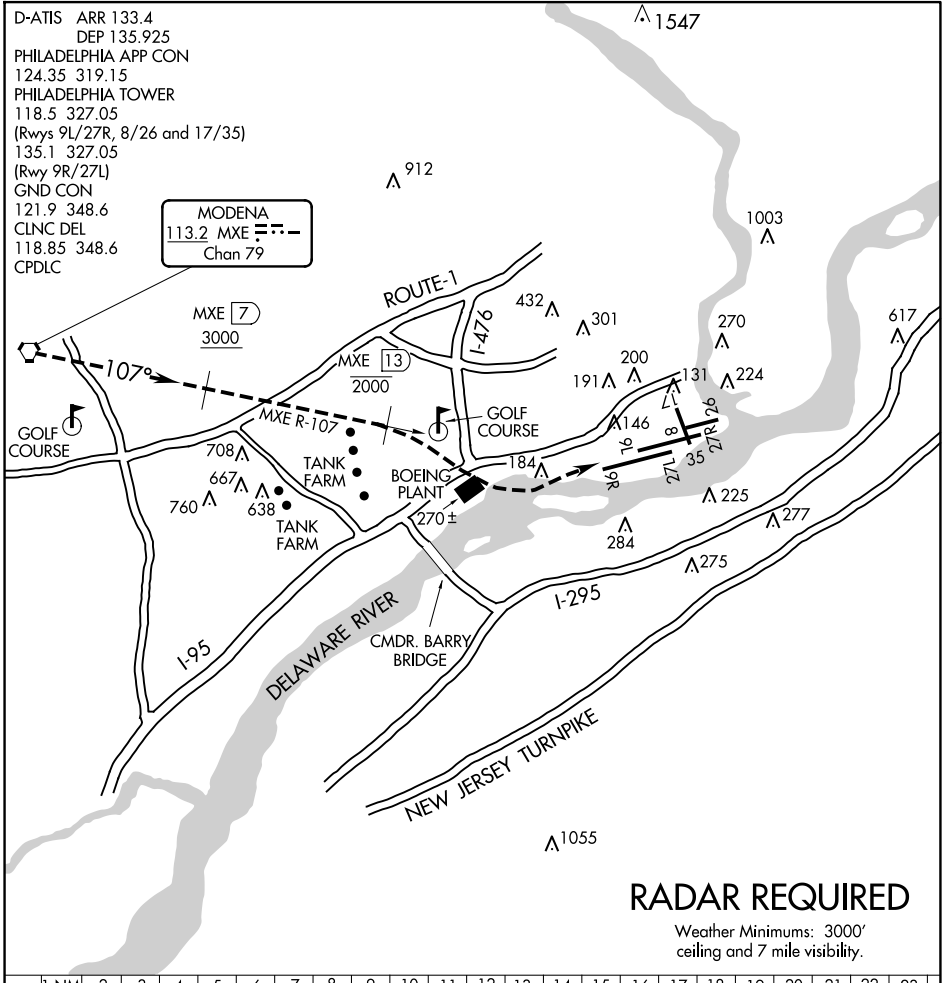
FREEDOM VISUAL RWY 9L

AL-320 (FAA)

PHILADELPHIA INTL (PHL)
PHILADELPHIA, PENNSYLVANIA

D-ATIS ARR 133.4
 DEP 135.925
 PHILADELPHIA APP CON
 124.35 319.15
 PHILADELPHIA TOWER
 118.5 327.05
 (Rwys 9L/27R, 8/26 and 17/35)
 135.1 327.05
 (Rwy 9R/27L)
 GND CON
 121.9 348.6
 CLNC DEL
 118.85 348.6
 CPDLC

MODENA
 113.2 MXE  ---
 Chan 79



NE-4, 23 JAN 2025 to 20 FEB 2025

FREEDOM VISUAL RWY 9L

Expect radar vectors to the MXE R-107.

Proceed Southeast on the MXE R-107 inbound for Rwy 9L.

Report the airport in sight to final controller.

Aircraft must remain on the MXE R-107 until the MXE R-107/13 DME;
 then proceed visually to Rwy 9L or as assigned by the tower.

Expect aircraft to be utilizing a simultaneous visual or ILS approach
 to Rwy 9R during this operation.

FREEDOM VISUAL RWY 9L 39°52'N-75°14'W
 Orig 25MAR99

PHILADELPHIA, PENNSYLVANIA
 PHILADELPHIA INTL (PHL)