

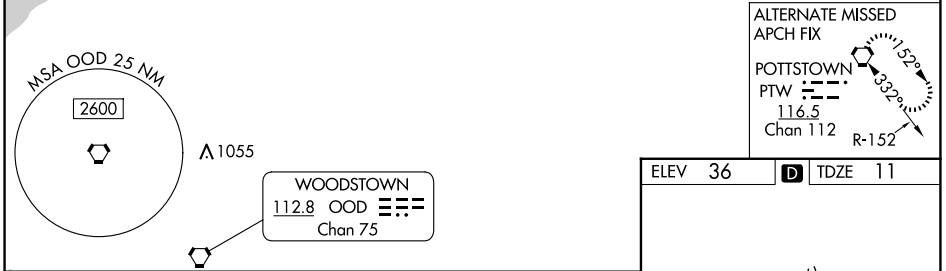
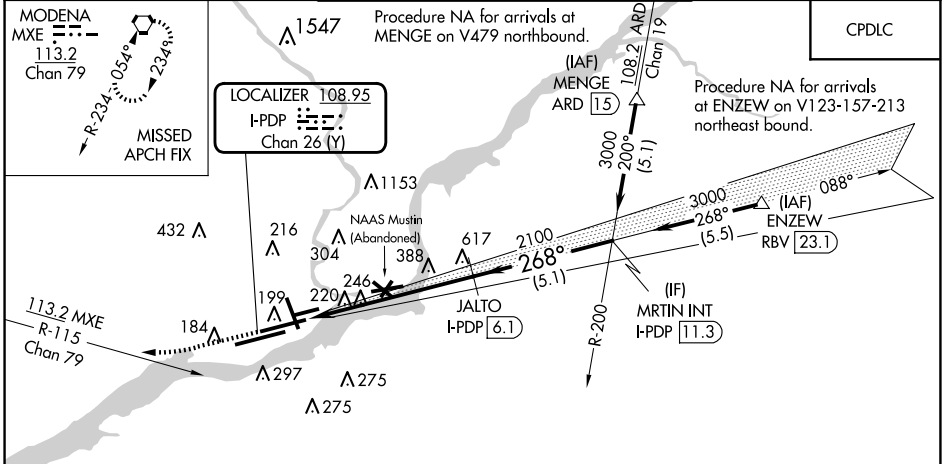
ILS RWY 27R (SA CAT I & II)

PHILADELPHIA INTL (PHL)

LOC/DME I-PDP 108.95 Chan 26 (Y)	APP CRS 268°	Rwy Idg 8864 TDZE 11 Apt Elev 36
---	------------------------	---

DME required.	MALSR 	MISSED APPROACH: Climb to 1500 then climbing right turn to 3000 on MXE VORTAC R-115 to MXE VORTAC and hold.
▼ SA CAT I: Requires specific OPSPEC, MSPEC or LOA approval and use of HUD to DH. SA CAT II: Reduced lighting: requires specific OPSPEC, MSPEC or LOA approval and use of autoland or HUD to touchdown.		

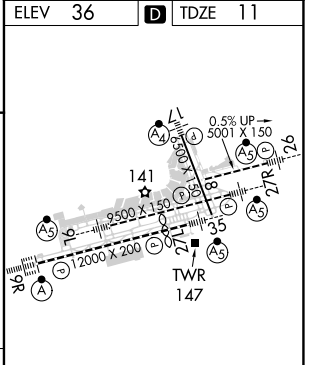
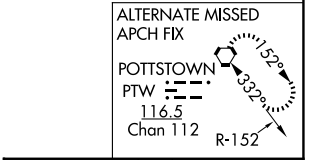
D-ATIS ARR 133.4 DEP 135.925	PHILADELPHIA APP CON 124.35 319.15	PHILADELPHIA TOWER 118.5 327.05 (Rwys 9L/27R, 8/26 and 17/35) 135.1 327.05 (Rwy 9R/27L)	GND CON 121.9 348.6	CLNC DEL 118.85 348.6
--	--	---	-------------------------------	---------------------------------



1500	3000	MXE	VGSI and ILS glidepath not coincident (VGSI Angle 3.00/TCH 81).
	JALTO I-PDP 6.1	MRTIN INT I-PDP 11.3	
	2100	3000	
	268°	2100	
		GS 3.00° TCH 52	
	1181	6.3 NM	5.1 NM

CATEGORY	A	B	C	D
S-ILS 27R	SA CAT I RA 157/14 150 DA 161			
S-ILS 27R	SA CAT II RA 102/12 100 DA 111			

SA CATEGORY I & II ILS - SPECIAL AIRCREW & AIRCRAFT CERTIFICATION REQUIRED



TDZ/CL Rwy 9R
HIRL all Rwys
REIL Rws 9L and 35

NE-4, 23 JAN 2025 to 20 FEB 2025

NE-4, 23 JAN 2025 to 20 FEB 2025