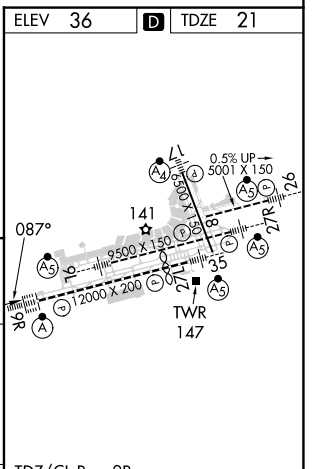
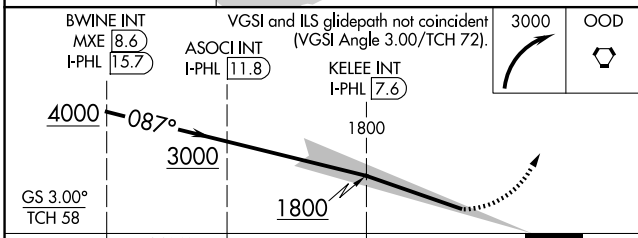
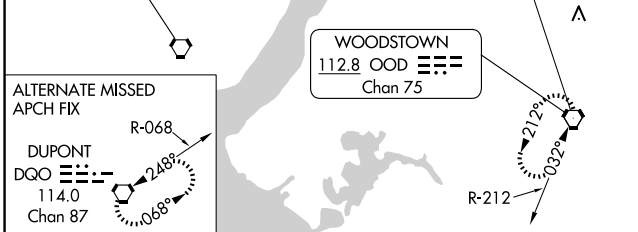
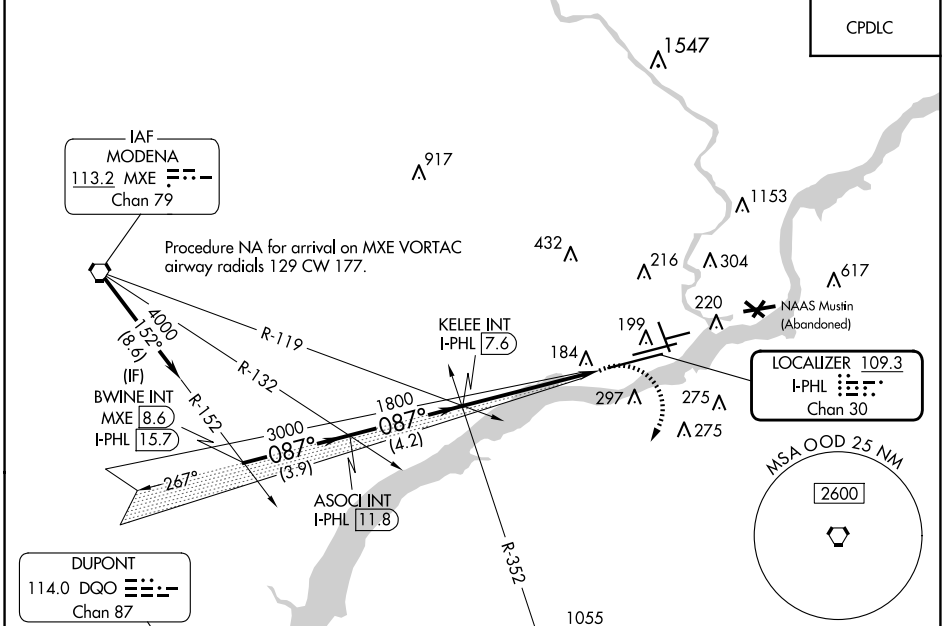


ILS V RWY 9R (CONVERGING)

PHILADELPHIA INTL (PHL)

LOC/DME I-PHL 109.3 Chan 30	APP CRS 087°	Rwy Idg 12000 TDZE 21 Apt Elev 36
---	------------------------	--

RADAR required.		ALS-F-2	MISSED APPROACH: Climbing right turn to 3000 direct OOD VORTAC and hold.	
<p>Simultaneous approach authorized. For inop ALS, increase S-ILS 9R all Cats visibility to RVR 6000.</p>				
D-ATIS ARR 133.4 DEP 135.925	PHILADELPHIA APP CON 124.35 319.15	PHILADELPHIA TOWER 118.5 327.05 (Rwys 9L/27R, 8/26 and 17/35) 135.1 327.05 (Rwy 9R/27L)	GND CON 121.9 348.6	CLNC DEL 118.85 348.6



CATEGORY	A	B	C	D
S-ILS 9R		421/35	400 (400-%)	

ILS V RWY 9R (CONVERGING)

NE-4, 23 JAN 2025 to 20 FEB 2025

NE-4, 23 JAN 2025 to 20 FEB 2025