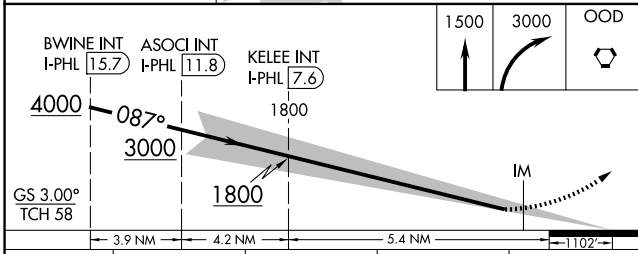
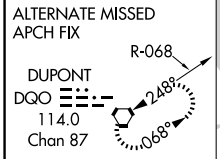
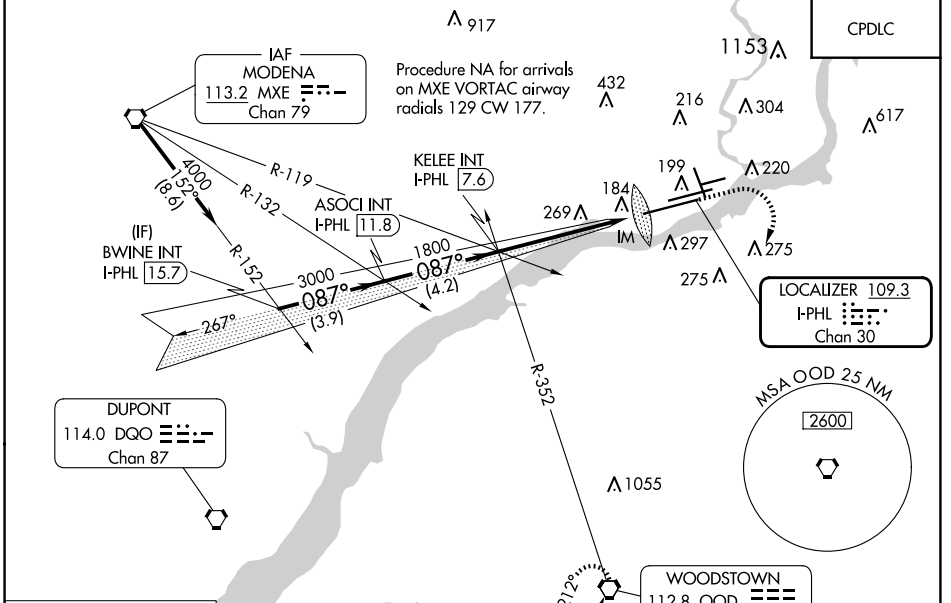


|   |                        |  |
|---|------------------------|--|
| LOC/DME I-PHL<br><b>109.3</b><br>Chan <b>30</b> | APP CRS<br><b>087°</b> | Rwy Idg <b>12000</b><br>TDZE <b>21</b><br>Apt Elev <b>36</b> |
|---|------------------------|--|

# ILS Z RWY 9R (SA CAT I)

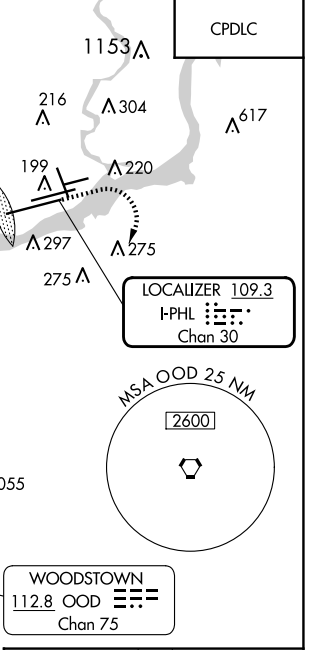
PHILADELPHIA INTL (PHL)

|  |  |   |  |   |
|--|--|---|--|---|
| Requires specific OPSPEC, MSPEC, or LOA approval and use of HUD to DH. |  | MISSED APPROACH: Climb to 1500 then climbing right turn to 3000 direct OOD VORTAC and hold. |  |   |
|  |  | D-ATIS<br>ARR <b>133.4</b><br>DEP <b>135.925</b>  | PHILADELPHIA APP CON<br><b>124.35 319.15</b> | PHILADELPHIA TOWER<br><b>118.5 327.05</b> (Rwys 9L/27R, 8/26 and 17/35)<br><b>135.1 327.05</b> (Rwy 9R/27L) |

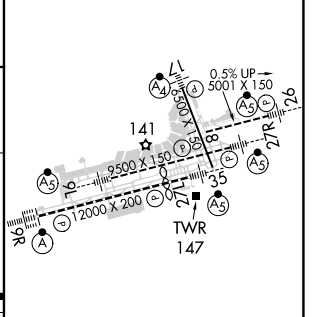


|          |                      |   |   |   |
|----------|----------------------|---|---|---|
| CATEGORY | A                    | B | C | D |
| S-ILS 9R | RA 171/14 150 DA 171 |   |   |   |

**SA CATEGORY I ILS - SPECIAL AIRCREW & AIRCRAFT CERTIFICATION REQUIRED**



|                |                |
|----------------|----------------|
| ELEV <b>36</b> | TDZE <b>21</b> |
|----------------|----------------|



TDZ/CL Rwy 9R  
HIRL all Rwys  
REIL Rwys 9L and 35

NE-4, 23 JAN 2025 to 20 FEB 2025

NE-4, 23 JAN 2025 to 20 FEB 2025