

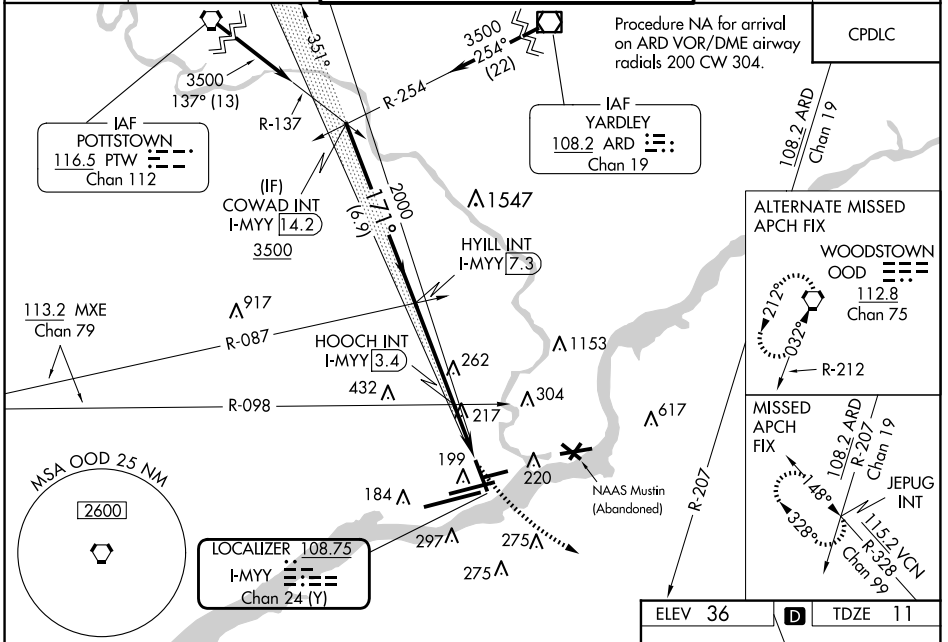
LOC/DME I-MYY 108.75 Chan 24 (Y)	APP CRS 171°	Rwy Idg 6500 TDZE 11 Apt Elev 36
---	------------------------	---

ILS Z or LOC RWY 17

PHILADELPHIA INTL (PHL)

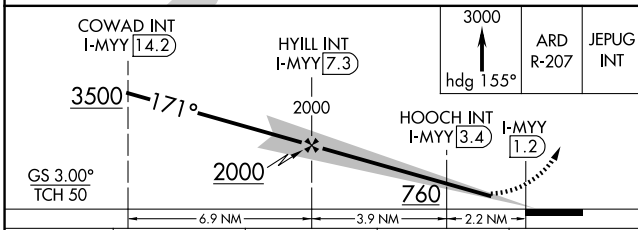
<p>⚠ Inop table does not apply to S-ILS 17 all Cats and S-LOC 17 Cat A. For inop ALS, increase S-LOC 17 Cat C visibility to 2 SM. HOOCH fix minimums: inop table does not apply to Cats A/B. Rwy 17 helicopter visibility reduction below RVR 5000 NA.</p>	MALSF	MISSED APPROACH: Climb to 3000 on heading 155° and ARD VOR/DME R-207 to JEPUG INT and hold.

D-ATIS ARR 133.4 DEP 135.925	PHILADELPHIA APP CON 124.35 319.15	PHILADELPHIA TOWER 118.5 327.05 (Rwys 9L/27R, 8/26 and 17/35) 135.1 327.05 (Rwy 9R/27L)	GND CON 121.9 348.6	CLNC DEL 118.85 348.6
--	--	---	-------------------------------	---------------------------------



NE-4, 23 JAN 2025 to 20 FEB 2025

NE-4, 23 JAN 2025 to 20 FEB 2025



ELEV 36	D	TDZE 11
---------	----------	---------

TDZ/CL Rwy 9R HIRL all Rwys REIL Rwys 9L and 35					
FAF to MAP 6.1 NM					
Knots	60	90	120	150	180
Min:Sec	6:06	4:04	3:03	2:26	2:02

CATEGORY	A	B	C	D
S-ILS 17	260/50 249 (300-1)			
S-LOC 17	760/50 749 (800-1)	760/55 749 (800-1)	760-1 ⁷ / ₈ 749 (800-1 ⁷ / ₈)	760-2 ¹ / ₄ 749 (800-2 ¹ / ₄)
CIRCLING	760-1 724 (800-1)	760-1 ¹ / ₄ 724 (800-1 ¹ / ₄)	760-2 724 (800-2)	760-2 ¹ / ₄ 724 (800-2 ¹ / ₄)
HOOCH FIX MINIMUMS				
S-LOC 17	480/50 469 (500-1)		480/60 469 (500-1 ¹ / ₄)	
CIRCLING	540-1 504 (600-1)	600-1 564 (600-1)	620-1 ¹ / ₂ 584 (600-1 ¹ / ₂)	720-2 ¹ / ₄ 684 (700-2 ¹ / ₄)