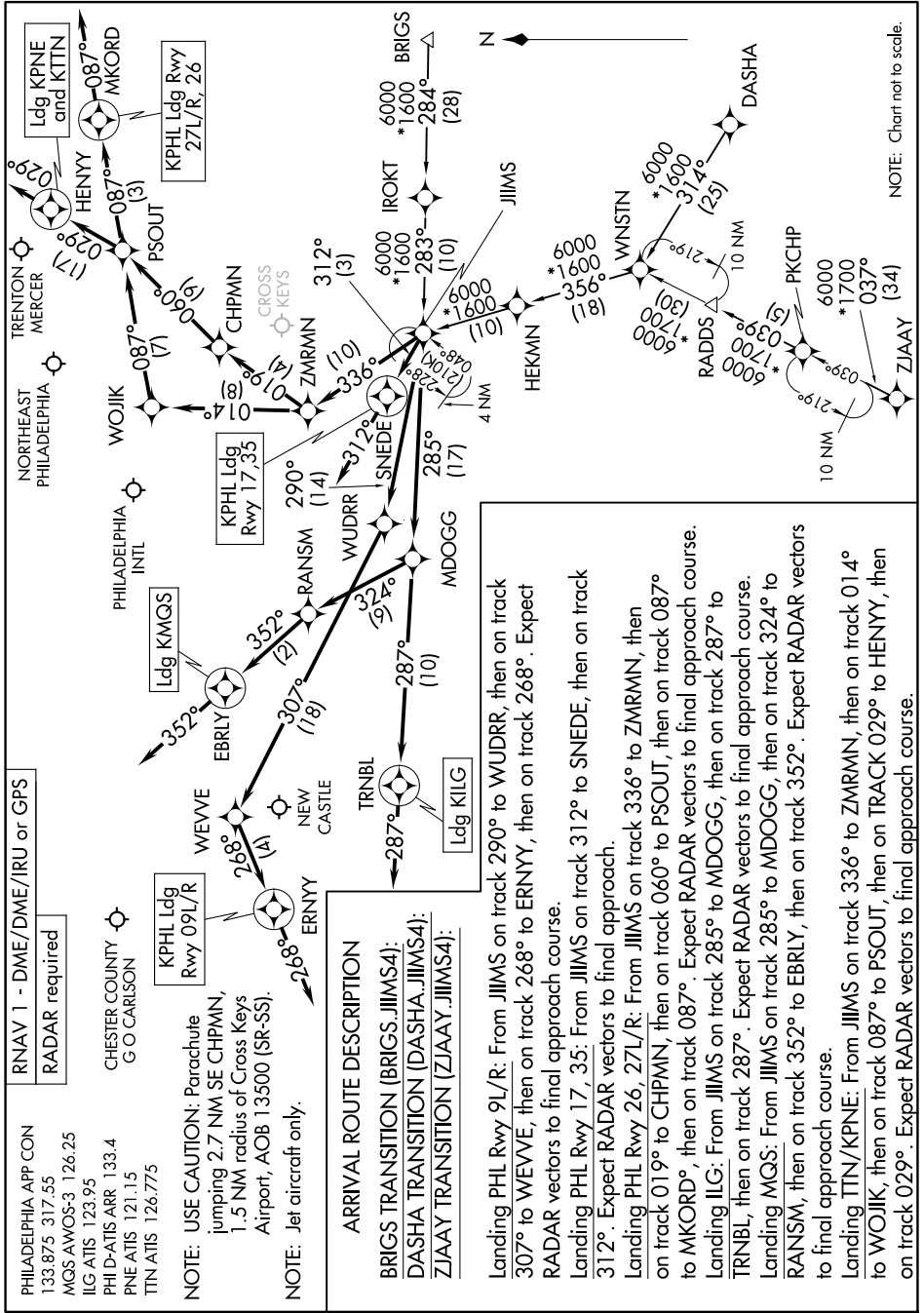


JIIMS FOUR ARRIVAL (RNAV)

PHILADELPHIA, PENNSYLVANIA

NE-4, 23 JAN 2025 to 20 FEB 2025



RNAV 1 - DME/DME/IRU or GPS
 RADAR required

PHILADELPHIA APP CON
 133.875 317.55
 MGS AWOS-3 126.25
 ILG ATIS 123.95
 PHI D-ATIS ARR 133.4
 PNE ATIS 121.15
 TIN ATIS 126.775

CHESTER COUNTY
 G O CARLSON
 KPHL Ldg
 Rwy 09L/R

NOTE: USE CAUTION: Parachute
 jumping 2.7 NM SE CHPMN,
 1.5 NM radius of Cross Keys
 Airport, AOB 13500 (SR-SS).
 NOTE: Jet aircraft only.

ARRIVAL ROUTE DESCRIPTION

BRIGS TRANSITION (BRIGS.JIIMS4):
DASHA TRANSITION (DASHA.JIIMS4):
ZIYA TRANSITION (ZIYA.JIIMS4):

Landing PHL Rwy 9L/R: From JIIMS on track 290° to WUDRR, then on track 307° to WEVE, then on track 268° to ERNY, then on track 268°. Expect RADAR vectors to final approach course.

Landing PHL Rwy 17, 35: From JIIMS on track 312° to SNEDE, then on track 312°. Expect RADAR vectors to final approach.

Landing PHL Rwy 26, 27L/R: From JIIMS on track 336° to ZMRMN, then on track 019° to CHPMN, then on track 060° to PSOUT, then on track 087° to MKORD°, then on track 087°. Expect RADAR vectors to final approach course.

Landing ILG: From JIIMS on track 285° to MDOGG, then on track 287° to TRNBL, then on track 287°. Expect RADAR vectors to final approach course.

Landing MGS: From JIIMS on track 285° to MDOGG, then on track 324° to RANSM, then on track 352° to EBRLY, then on track 352°. Expect RADAR vectors to final approach course.

Landing TTN/KPNE: From JIIMS on track 336° to ZMRMN, then on track 014° to WOJJK, then on track 087° to PSOUT, then on TRACK 029° to HENNY, then on track 029°. Expect RADAR vectors to final approach course.

NOTE: Chart not to scale.

NE-4, 23 JAN 2025 to 20 FEB 2025

JIIMS FOUR ARRIVAL (RNAV)

PHILADELPHIA, PENNSYLVANIA