

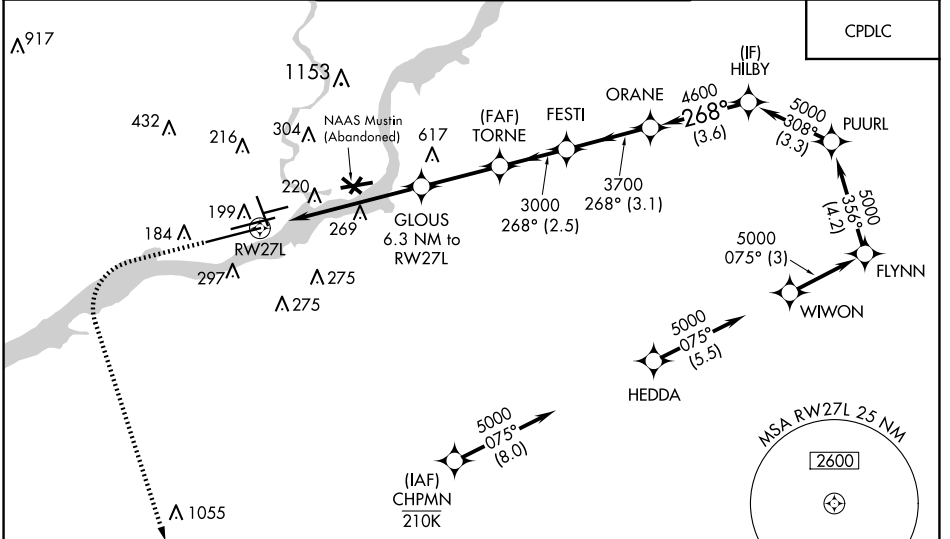
WAAS CH <b>97322</b>	APP CRS <b>268°</b>	Rwy Idg TDZE Apt Elev	<b>9912</b> <b>10</b> <b>36</b>
-------------------------	------------------------	-----------------------------	---------------------------------------

# RNAV (GPS) RWY 27L

PHILADELPHIA INTL (PHL)

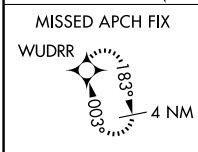
RNP APCH - GPS.		MALSR 	MISSED APPROACH: Climb to 500 then climbing left turn to 3000 direct WUDRR and hold.
<p><b>▽</b> For uncompensated Baro-VNAV systems, LNAV/VNAV NA below -11°C or above 54°C. For inop ALS, increase LNAV/VNAV all Cats visibility to RVR 6000. * RVR 1800 authorized with use of FD or AP or HUD to DA.</p>			

D-ATIS ARR <b>133.4</b> DEP <b>135.925</b>	PHILADELPHIA APP CON <b>124.35 319.15</b>	PHILADELPHIA TOWER (Rwys 9L/27R, 8/26 and 17/35) <b>118.5 327.05</b> <b>135.1 327.05</b> (Rwy 9R/27L)	GND CON <b>121.9 348.6</b>	CLNC DEL <b>118.85 348.6</b>
--	--	--	-------------------------------	---------------------------------

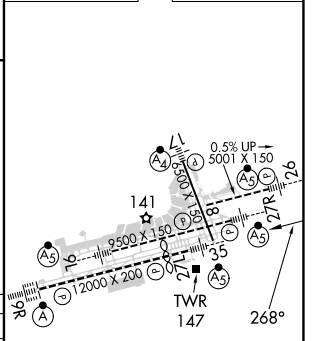
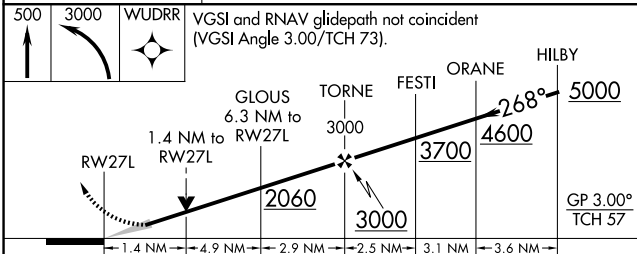


NE-4, 23 JAN 2025 to 20 FEB 2025

NE-4, 23 JAN 2025 to 20 FEB 2025



ELEV <b>36</b>	<b>D</b> TDZE <b>10</b>
----------------	-------------------------



CATEGORY	A	B	C	D
LPV DA*		210/24	200 (200-1/2)	
LNAV/DA VNAV		422/40	412 (400-3/4)	
LNAV MDA	540/24	530 (600-1/2)	540/55	530 (600-1)
<b>C</b> CIRCLING	540-1 504 (600-1)	600-1 564 (600-1)	620-1 1/2 584 (600-1 1/2)	720-2 1/4 684 (700-2 1/4)

TDZ/CL Rwy 9R  
HIRL all Rwys  
REIL Rwys 9L and 35