

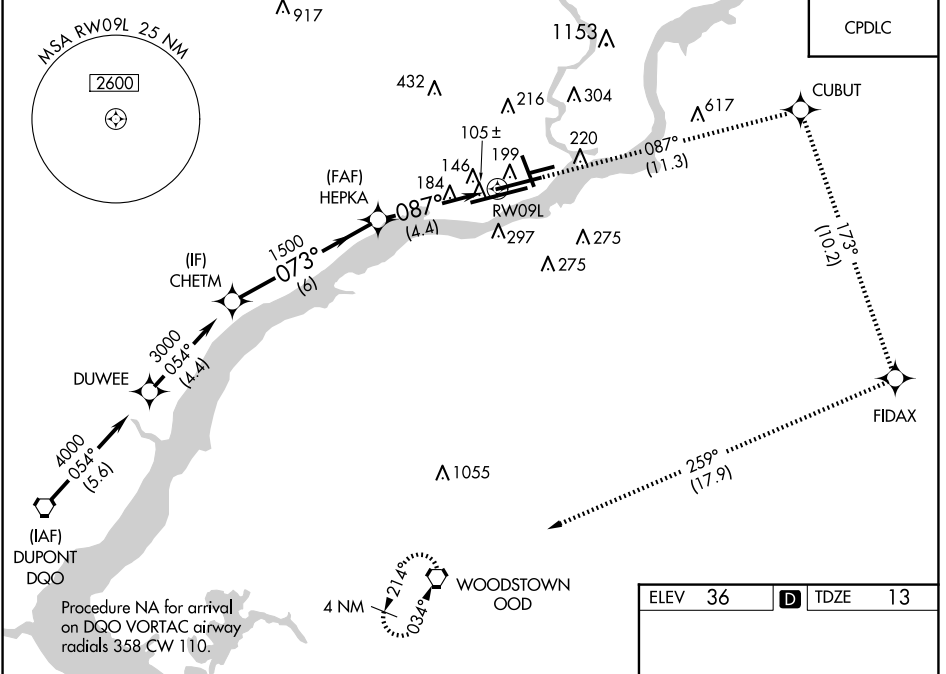
APP CRS	Rwy Idg	<b>9500</b>
<b>087°</b>	TDZE	<b>13</b>
	Apt Elev	<b>36</b>

# RNAV (RNP) Z RWY 9L

PHILADELPHIA INTL (PHL)

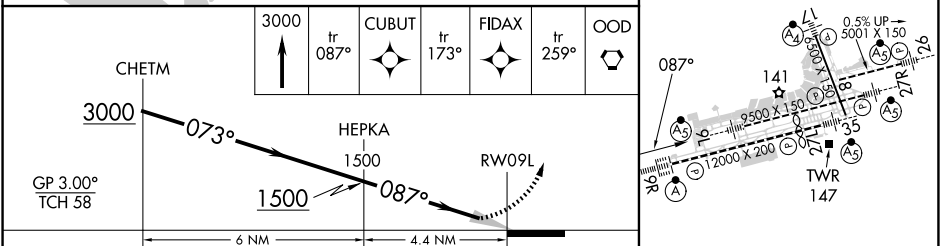
RNP AR APCH - GPS.		MALSRL	MISSED APPROACH: Climb to 3000 on track 087° to CUBUT and on track 173° to FIDAX and on track 259° to OOD VORTAC and hold.
For uncompensated Baro-VNAV systems, procedure NA below -12°C or above 54°C. For inop ALS, increase RNP 0.11 visibility all Cats to RVR 6000 and RNP 0.30 visibility all Cats to 1/2 SM.			

D-ATIS	PHILADELPHIA TOWER		GND CON	CLNC DEL
ARR <b>133.4</b>	<b>118.5 327.05</b> (Rwys 9L/27R, 8/26 and 17/35) <b>135.1 327.05</b> (Rwy 9R/27L)		<b>121.9 348.6</b>	<b>118.85 348.6</b>
DEP <b>135.925</b>	PHILADELPHIA APP CON			
	<b>124.35 319.15</b>			



NE-4, 23 JAN 2025 to 20 FEB 2025

NE-4, 23 JAN 2025 to 20 FEB 2025



CATEGORY	A	B	C	D
RNP 0.11 DA		382/35	369 (400-%)	
RNP 0.30 DA		434/45	421 (400-%)	

**AUTHORIZATION REQUIRED**

TDZ/CL Rwy 9R  
HIRL all Rwys  
REIL Rwys 9L and 35