

BALDY THREE DEPARTURE  
(BALDY3,MAXXO) 28FEB19

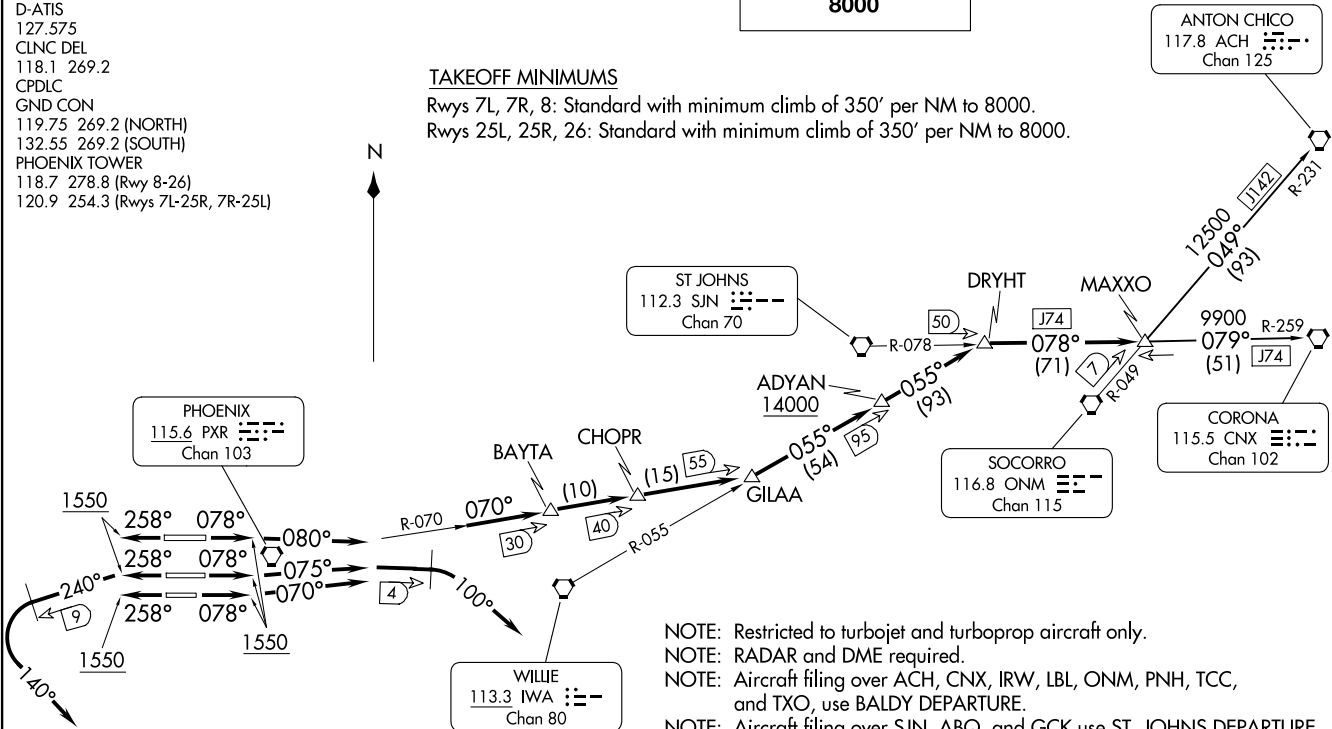
PHOENIX SKY HARBOR INTL (PHX)  
PHOENIX, ARIZONA

PHOENIX DEP CON  
126.8 269.6  
D-ATIS  
127.575  
CLNC DEL  
118.1 269.2  
CPDLC  
GND CON  
119.75 269.2 (NORTH)  
132.55 269.2 (SOUTH)  
PHOENIX TOWER  
118.7 278.8 (Rwy 8-26)  
120.9 254.3 (Rwys 7L-25R, 7R-25L)

**TOP ALTITUDE:  
8000**

TAKEOFF MINIMUMS

Rwys 7L, 7R, 8: Standard with minimum climb of 350' per NM to 8000.  
Rwys 25L, 25R, 26: Standard with minimum climb of 350' per NM to 8000.



- NOTE: Restricted to turbojet and turboprop aircraft only.
- NOTE: RADAR and DME required.
- NOTE: Aircraft filing over ACH, CNX, IRW, LBL, ONM, PNH, TCC, and TXO, use BALDY DEPARTURE.
- NOTE: Aircraft filing over SJN, ABQ, and GCK use ST. JOHNS DEPARTURE.
- NOTE: MRA CHOPR/PXR 40 DME 9100 to receive PXR.
- NOTE: MRA GILAA/PXR 55 DME 14000 to receive PXR and IWA.
- NOTE: MRA ADYAN/IWA 95 DME FL240 to receive IWA.

(CONTINUED ON FOLLOWING PAGE)

NOTE: Chart not to scale.

(BALDY3,MAXXO) 28334  
BALDY THREE DEPARTURE

AL-322 (FAA)

PHOENIX SKY HARBOR INTL (PHX)  
PHOENIX, ARIZONA

# BALDY THREE DEPARTURE



## DEPARTURE ROUTE DESCRIPTION

TAKEOFF RUNWAY 7L: Climb heading 078° to 1550, then climbing left turn heading 075°, at 4 DME east of PXR VORTAC, climbing right turn heading 100°. Thence . . . .

TAKEOFF RUNWAY 7R: Climb heading 078° to 1550, then climbing left turn heading 070°, at 4 DME east of PXR VORTAC, climbing right turn heading 100°. Thence . . . .

TAKEOFF RUNWAY 8: Climb heading 078° to 1550, then climbing right turn heading 080°, at 4 DME east of PXR VORTAC, climbing right turn heading 100°. Thence . . . .

TAKEOFF RUNWAY 25L: Climb heading 258° to 1550, then climbing left turn heading 240°, at 9 DME west of PXR VORTAC, climbing left turn heading 140°. Thence . . . .

TAKEOFF RUNWAY 25R: Climb heading 258° to 1550, then climbing left turn heading 240°, at 9 DME west of PXR VORTAC, climbing left turn heading 140°. Thence . . . .

TAKEOFF RUNWAY 26: Climb heading 258° to 1550, then climbing left turn heading 240°, at 9 DME west of PXR VORTAC, climbing left turn heading 140°. Thence . . . .

. . . . maintain 8000 for RADAR vectors to PXR R-070 to GILAA/PXR 55 DME, then pilot nav on IWA R-055 to ADYAN/IWA 95 DME, cross ADYAN at or above 14000 and proceed on RADAR vector 055° to join SJN R-078/CNX R-259 to MAXXO/CNX 51 DME; then (transition). Expect filed altitude 3 minutes after departure.

LOST COMMUNICATIONS: Expect filed altitude 3 minutes after departure.

ANTON CHICO TRANSITION (BALDY3.ACH): From over MAXXO INT on ONM R-049 and ACH R-231 to ACH VORTAC.

CORONA TRANSITION (BALDY3.CNX): From over MAXXO INT on CNX R-259 to CNX VORTAC.

SW-4, 23 JAN 2025 to 20 FEB 2025

SW-4, 23 JAN 2025 to 20 FEB 2025