

# BRUSR ONE ARRIVAL (RNAV) Transition Routes

PHOENIX APP CON  
 128.65 353.9  
 PHOENIX TOWER  
 118.7 278.8 (Rwy 8-26)  
 120.9 254.3 (Rwy 7L-25R, 7R-25L)  
 GND CON  
 119.75 269.2 (North)  
 132.55 269.2 (South)  
 D-ATIS  
 127.575

NOTE: RADAR required.

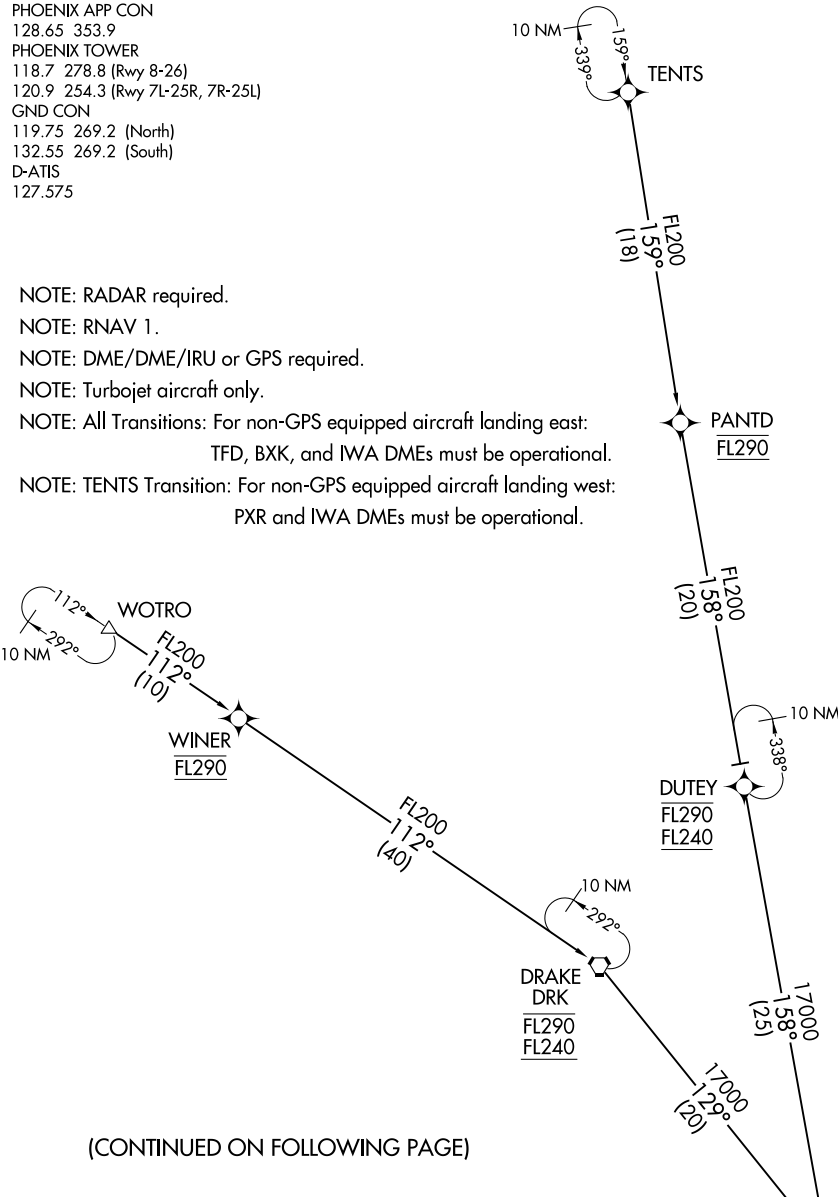
NOTE: RNAV 1.

NOTE: DME/DME/IRU or GPS required.

NOTE: Turbojet aircraft only.

NOTE: All Transitions: For non-GPS equipped aircraft landing east:  
TFD, BXK, and IWA DMEs must be operational.

NOTE: TENTS Transition: For non-GPS equipped aircraft landing west:  
PXR and IWA DMEs must be operational.



(CONTINUED ON FOLLOWING PAGE)

NOTE: Chart not to scale.

TENTS TRANSITION (TENTS.BRUSR1)  
 WOTRO TRANSITION (WOTRO.BRUSR1)

MAIER  
 FL250 270K  
 FL190  
 See following page for Arrival Routes.

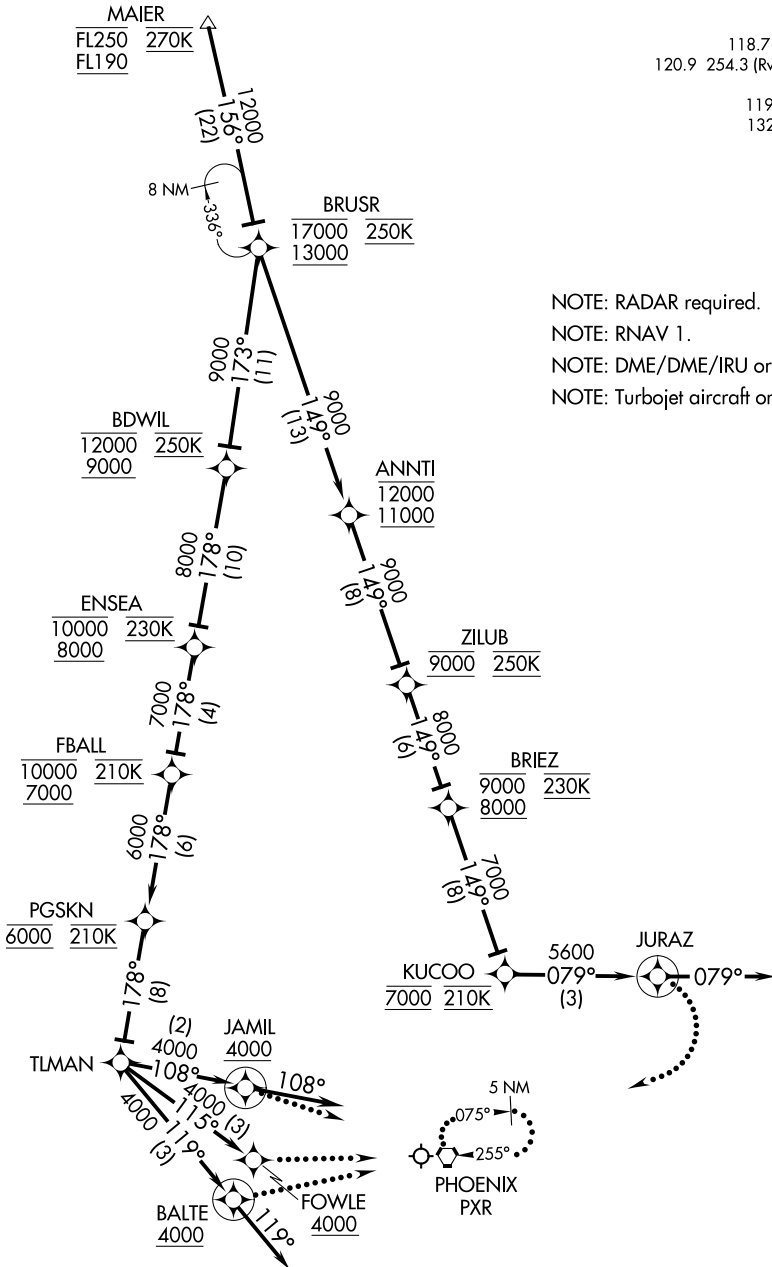
BRUSR ONE ARRIVAL (RNAV) Arrival Routes

PHOENIX APP CON  
128.65 353.9  
PHOENIX TOWER  
118.7 278.8 (Rwy 8-26)  
120.9 254.3 (Rwy 7L-25R, 7R-25L)  
GND CON  
119.75 269.2 (North)  
132.55 269.2 (South)  
D-ATIS  
127.575

NOTE: RADAR required.  
NOTE: RNAV 1.  
NOTE: DME/DME/IRU or GPS required.  
NOTE: Turbojet aircraft only.

SW-4, 23 JAN 2025 to 20 FEB 2025

SW-4, 23 JAN 2025 to 20 FEB 2025



NOTE: Chart not to scale.

(NARRATIVE ON FOLLOWING PAGE)

BRUSR ONE ARRIVAL (RNAV) Arrival Routes

## ARRIVAL ROUTE DESCRIPTION

From MAIER on track 156° to cross BRUSR at/above 13000 and at/below 17000 and at 250K.

LANDING RUNWAY 7L: From BRUSR on track 173° to cross BDWIL at/above 9000 and at/below 12000 and at 250K, then on track 178° to cross ENSEA at/above 8000 and at/below 10000 and at 230K, then on track 178° to cross FBALL at/above 7000 and at/below 10000 at 210K, then on track 178° to cross PGSKN at 6000 and at 210K, then on track 178° to TLMAN, then on track 115° to cross FOWLE at/above 4000. Expect ILS RWY 7L or RADAR vectors to final approach course.

LANDING RUNWAY 7R: From BRUSR on track 173° to cross BDWIL at/above 9000 and at/below 12000 and at 250K, then on track 178° to cross ENSEA at/above 8000 and at/below 10000 and at 230K, then on track 178° to cross FBALL at/above 7000 and at/below 10000 at 210K, then on track 178° to cross PGSKN at 6000 and at 210K, then on track 178° to TLMAN, then on track 119° to cross BALTE at or above 4000. Then on track 119°. Expect RADAR vectors to final approach course.

LANDING RUNWAY 8: From BRUSR on track 173° to cross BDWIL at/above 9000 and at/below 12000 and at 250K, then on track 178° to cross ENSEA at/above 8000 and at/below 10000 and at 230K, then on track 178° to cross FBALL at/above 7000 and at/below 10000 at 210K, then on track 178° to cross PGSKN at 6000 and at 210K, then on track 178° to TLMAN, then on track 108° to cross JAMIL at or above 4000. Then on track 108°. Expect RADAR vectors to final approach course.

LANDING RUNWAYS 25L, 25R, 26: From BRUSR on track 149° to cross ANNTI at/above 11000 and at/below 12000, then on track 149° to cross ZILUB at 9000 and at 250K, then on track 149° to cross BRIEZ at/above 8000 and at/below 9000 and at 230K, then on track 149° to cross KUCOO at 7000 and at 210K, then on track 079° to JURAZ, then on track 079°. Expect RADAR vectors to final approach course.

## LOST COMMUNICATIONS

LANDING RUNWAY 7L: At FOWLE, intercept and execute RWY 7L ILS approach. If unable, proceed direct PXR VORTAC and hold, maintain 9000.

LANDING RUNWAY 7R: At BALTE, intercept and execute RWY 7R ILS approach. If unable, proceed direct PXR VORTAC and hold, maintain 9000.

LANDING RUNWAY 8: At JAMIL, intercept and execute RWY 8 ILS approach, If unable, proceed direct PXR VORTAC and hold, maintain 9000.

LANDING RUNWAYS 25L, 25R, 26: At JURAZ, turn right, intercept and execute RWY 25L ILS approach. If unable, proceed direct PXR VORTAC and hold, maintain 9000.