

(JESSE.JESSE3) 23334

# JESSE THREE ARRIVAL

AL-322 (FAA)

PHOENIX SKY HARBOR INTL (PHX)  
PHOENIX, ARIZONA

PHOENIX APP CON  
128.65 353.9  
PHOENIX TOWER  
118.7 278.8 (Rwy 8-26)  
120.9 254.3 (Rwy 7L-25R, 7R-25L)  
GND CON  
119.75 269.2  
D-ATIS  
127.575

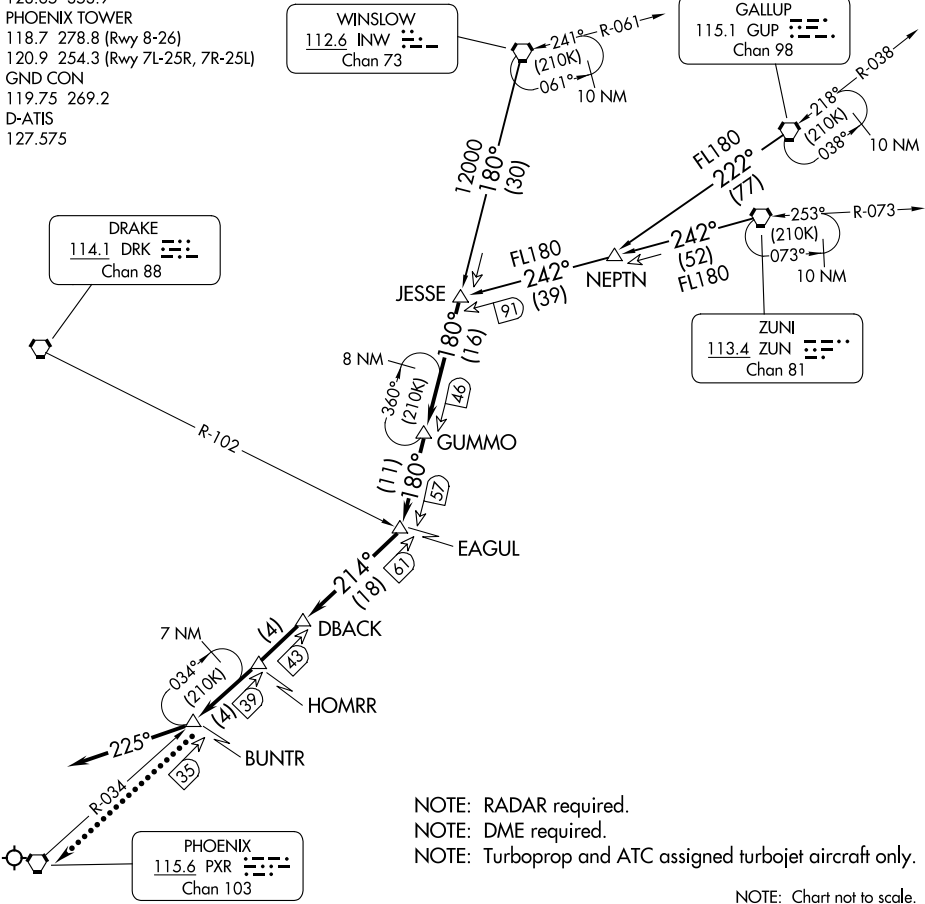
WINSLOW  
112.6 INW  
Chan 73

GALLUP  
115.1 GUP  
Chan 98

DRAKE  
114.1 DRK  
Chan 88

ZUNI  
113.4 ZUN  
Chan 81

PHOENIX  
115.6 PXR  
Chan 103



NOTE: RADAR required.  
 NOTE: DME required.  
 NOTE: Turboprop and ATC assigned turbojet aircraft only.

NOTE: Chart not to scale.

## ARRIVAL ROUTE DESCRIPTION

GALLUP TRANSITION (GUP.JESSE3): From over GUP VORTAC on GUP R-222 and ZUN R-242 to JESSE. Thence. . .

WINSLOW TRANSITION (INW.JESSE3): From over INW VORTAC on INW R-180 to JESSE. Thence. . .

ZUNI TRANSITION (ZUN.JESSE3): From over ZUN VORTAC on ZUN R-242 to JESSE. Thence. . .

. . . From over JESSE on INW R-180 to GUMMO, then on INW R-180 to EAGUL, then on PXR R-034 to DBACK, then on PXR R-034 to HOMRR, then on PXR R-034 to BUNTR, after BUNTR fly heading 225°, expect RADAR vectors to final approach course.

## LOST COMMUNICATIONS

After BUNTR, proceed direct to PXR VORTAC.

# JESSE THREE ARRIVAL

(JESSE.JESSE3) 02DEC21

PHOENIX, ARIZONA  
PHOENIX SKY HARBOR INTL (PHX)

SW-4, 23 JAN 2025 to 20 FEB 2025

SW-4, 23 JAN 2025 to 20 FEB 2025