

WAAS CH <b>82211</b> <b>W25B</b>	APP CRS <b>258°</b>	Rwy Idg TDZE Apt Elev	<b>7800</b> <b>1126</b> <b>1135</b>
--	------------------------	-----------------------------	---

# RNAV (GPS) Y RWY 25L

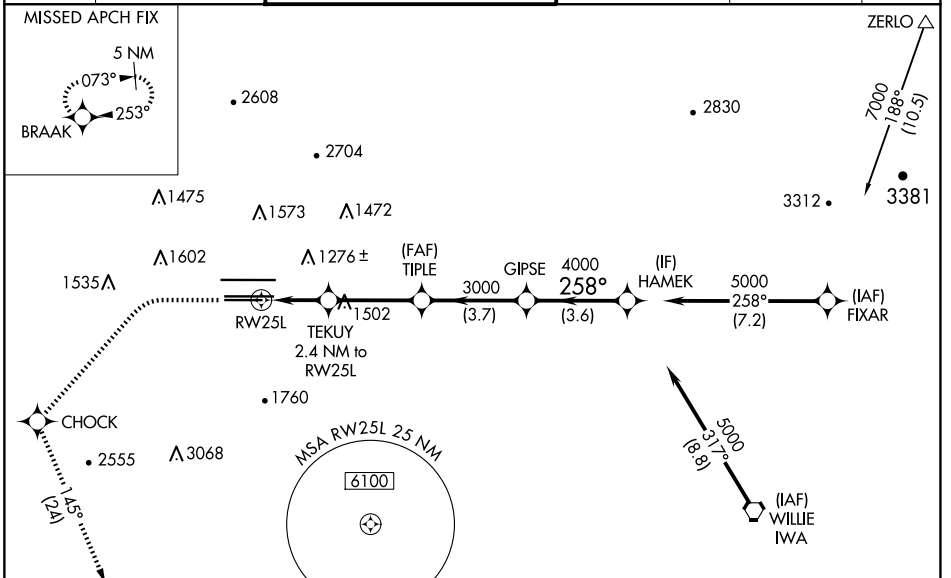
PHOENIX SKY HARBOR INTL (PHX)

RNP APCH-GPS.

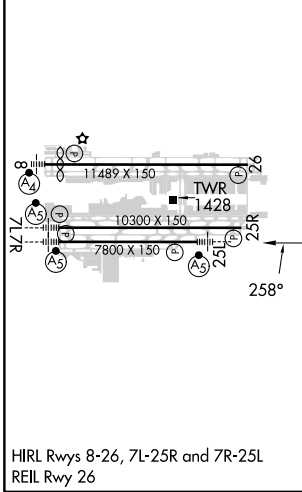
Simultaneous approach authorized. LNAV procedure NA during simultaneous operations. Use of FD or AP required during simultaneous operations. For uncompensated Baro-VNAV systems, procedure NA below 2°C or above 54°C. For inop ALS, increase visibility LPV all Cats to 1 SM, LNAV/VNAV all Cats to 1½ SM and LNAV Cats C/D 1¾ SM.

MALSR  
MISSED APPROACH: Climb to 1900 then climbing left turn to 5000 direct CHOCK and on track 145° to BRAAK and hold.

D-ATIS <b>127.575</b>	PHOENIX APP CON <b>128.65 353.9</b>	PHOENIX TOWER <b>118.7 278.8</b> (Rwy 8-26) <b>120.9 254.3</b> (Rwy 7L-25R, 7R-25L)	GND CON <b>119.75 269.2</b> (N) <b>132.55 269.2</b> (S)	CLNC DEL <b>118.1 269.2</b>	CPDLC
--------------------------	--	---	---	--------------------------------	-------



ELEV 1135	<b>D</b>	TDZE 1126
-----------	----------	-----------



1900	5000	CHOCK	tr 145°	BRAAK	VGSI and RNAV glidepath not coincident (VGSI Angle 3.00/TCH 66).
		TEKUY	TIPLE	GIPSE	HAMEK
		2.4 NM to RW25L	3000	4000	5000
		1.7 NM to RW25L	3000	258°	
		RW25L	1940	3000	GP 3.00° TCH 49
		1.7 NM	0.7 NM	3.3 NM	3.7 NM
CATEGORY	A	B	C	D	
LPV DA	1449-½ 323 (400-½)				
LNAV/VNAV DA	1589-1 463 (500-1)			1674-1½ 548 (600-1½)	
LNAV MDA	1740-½ 614 (700-½)		1740-1¾ 614 (700-1¾)		
<b>C</b> CIRCLING	1740-1 605 (700-1)		2040-2¾ 905 (1000-2¾)		2340-3 1205 (1300-3)

SW-4, 23 JAN 2025 to 20 FEB 2025

SW-4, 23 JAN 2025 to 20 FEB 2025