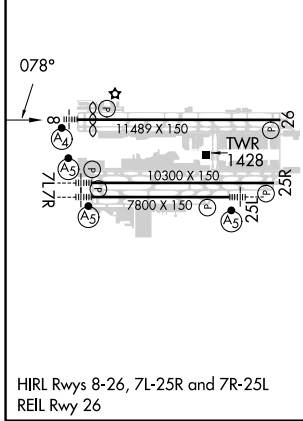
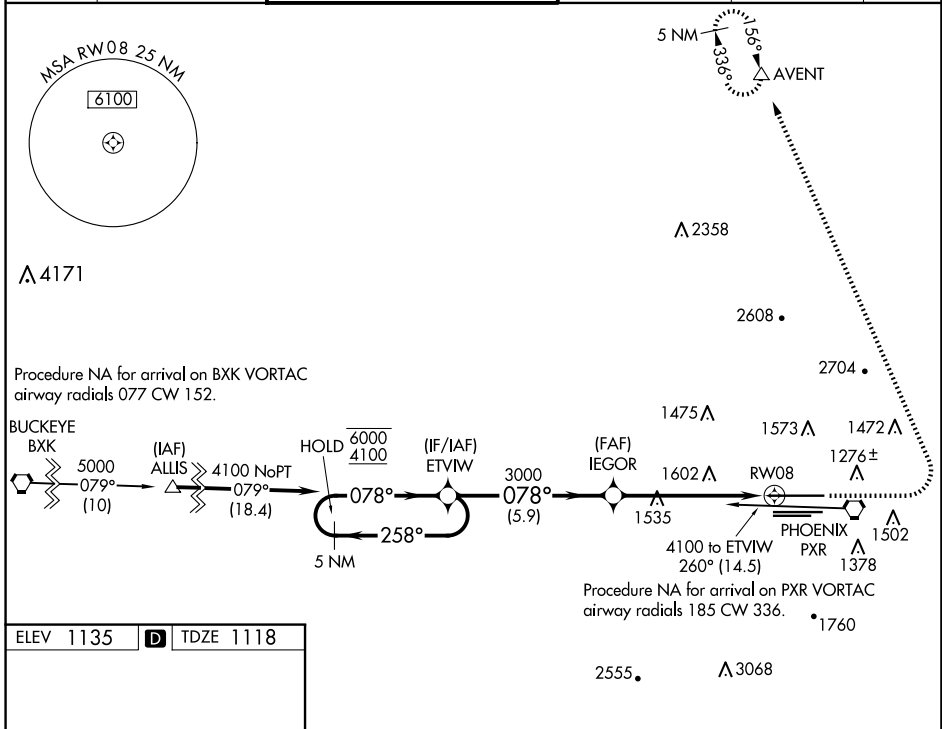


WAAS CH <b>86611</b> <b>W08A</b>	APP CRS <b>078°</b>	Rwy Idg <b>10591</b> TDZE <b>1118</b> Apt Elev <b>1135</b>
--	------------------------	--

# RNAV (GPS) Y RWY 8

PHOENIX SKY HARBOR INTL (PHX)

RNP APCH - GPS.		MALSF	MISSED APPROACH: Climb to 3000 then climbing left turn to 5000 direct AVENT and hold.		
<p><b>⚠</b> Simultaneous approach authorized. LNAV procedure NA during simultaneous operations. Inop cats does not apply to LPV all Cats. For inop ALS, increase LNAV Cats C and D visibility to 2 SM.</p>					
D-ATIS <b>127.575</b>	PHOENIX APP CON <b>128.65 353.9</b>	PHOENIX TOWER <b>118.7 278.8</b> (Rwy 8-26) <b>120.9 254.3</b> (Rwy 7L-25R, 7R-25L)	GND CON <b>119.75 269.2</b> (N) <b>132.55 269.2</b> (S)	CLNC DEL <b>118.1 269.2</b>	CPDLC



ELEV 1135		<b>D</b>	TDZE 1118	
<p>5 NM Holding Pattern</p> <p>6000 ← 258° 4100 → 078°</p> <p>GP 3.00° TCH 54</p>		<p>VGSI and RNAV glidepath not coincident (VGSI Angle 3.00/TCH 69).</p> <p>3000 5000 AVENT</p> <p>ETVIW IEGOR RWY 8</p> <p>2.1 NM to RWY 8</p> <p>5.9 NM 3.6 NM 2.1</p>		
CATEGORY	A	B	C	D
LPV DA	1368-3/4 250 (300-3/4)			
LNAV MDA	1860-3/4 742 (800-3/4)	1860-1 742 (800-1)	1860-1 7/8 742 (800-1 7/8)	
<b>C</b> CIRCLING	1860-1 725 (800-1)	1860-1 1/4 725 (800-1 1/4)	2040-2 3/4 905 (1000-2 3/4)	2340-3 1205 (1300-3)

SW-4, 23 JAN 2025 to 20 FEB 2025

SW-4, 23 JAN 2025 to 20 FEB 2025