

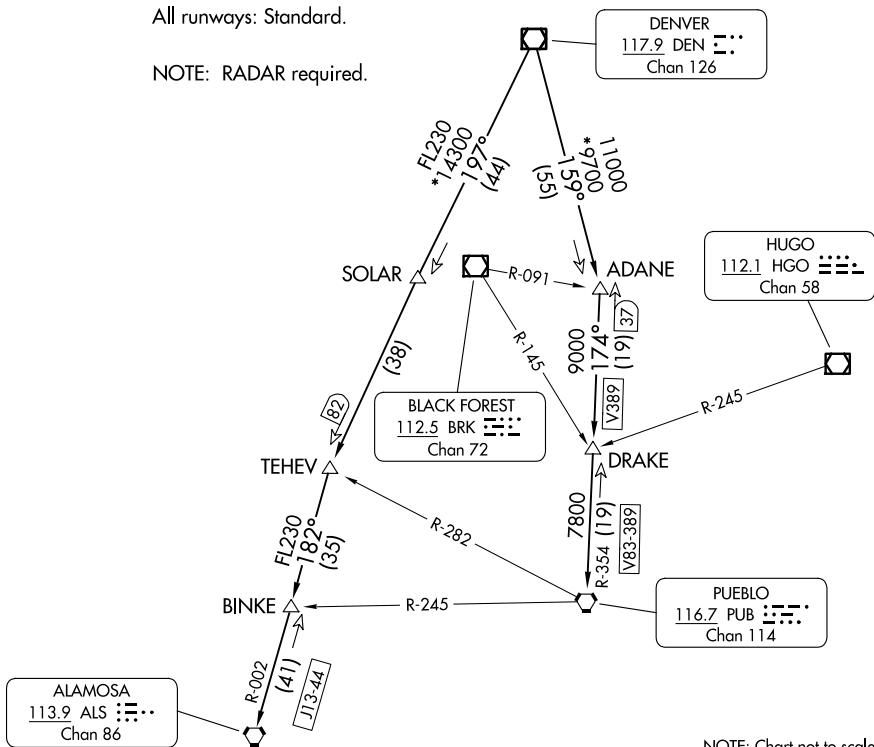
DENVER DEP CON  
134.85 251.125  
CLNC DEL  
126.65

**TOP ALTITUDE:  
ASSIGNED BY ATC**

### TAKEOFF MINIMUMS

All runways: Standard.

NOTE: RADAR required.



SW-1, 23 JAN 2025 to 20 FEB 2025

SW-1, 23 JAN 2025 to 20 FEB 2025

NOTE: Chart not to scale.

### DEPARTURE ROUTE DESCRIPTION

**TAKEOFF ALL RUNWAYS:** Fly assigned heading and altitude for RADAR vectors to assigned route. Expect filed altitude 10 minutes after departure.

**LOST COMMUNICATIONS:** If no transmissions are received within one minute after departure, maintain assigned heading until 7000 feet, then climb to filed altitude via direct DEN VOR/DME, thence via assigned transition. If filed altitude is above 10000 feet, cross DEN VOR/DME at or above 11000 feet.

**ALAMOSA TRANSITION (PIKES2.ALS):** From over DEN VOR/DME on DEN R-197 to TEHEV, then on ALS R-002 to ALS VORTAC.

**BINKE TRANSITION (PIKES2.BINKE):** From over DEN VOR/DME on DEN R-197 to TEHEV, then on ALS R-002 to BINKE.

**PUEBLO TRANSITION (PIKES2.PUB):** From over DEN VOR/DME on DEN R-159 to ADANE, then on PUB R-354 to PUB VORTAC.