

WNGSS ONE DEPARTURE (RNAV)
(WNGSS1.WNGSS) 26MAR20

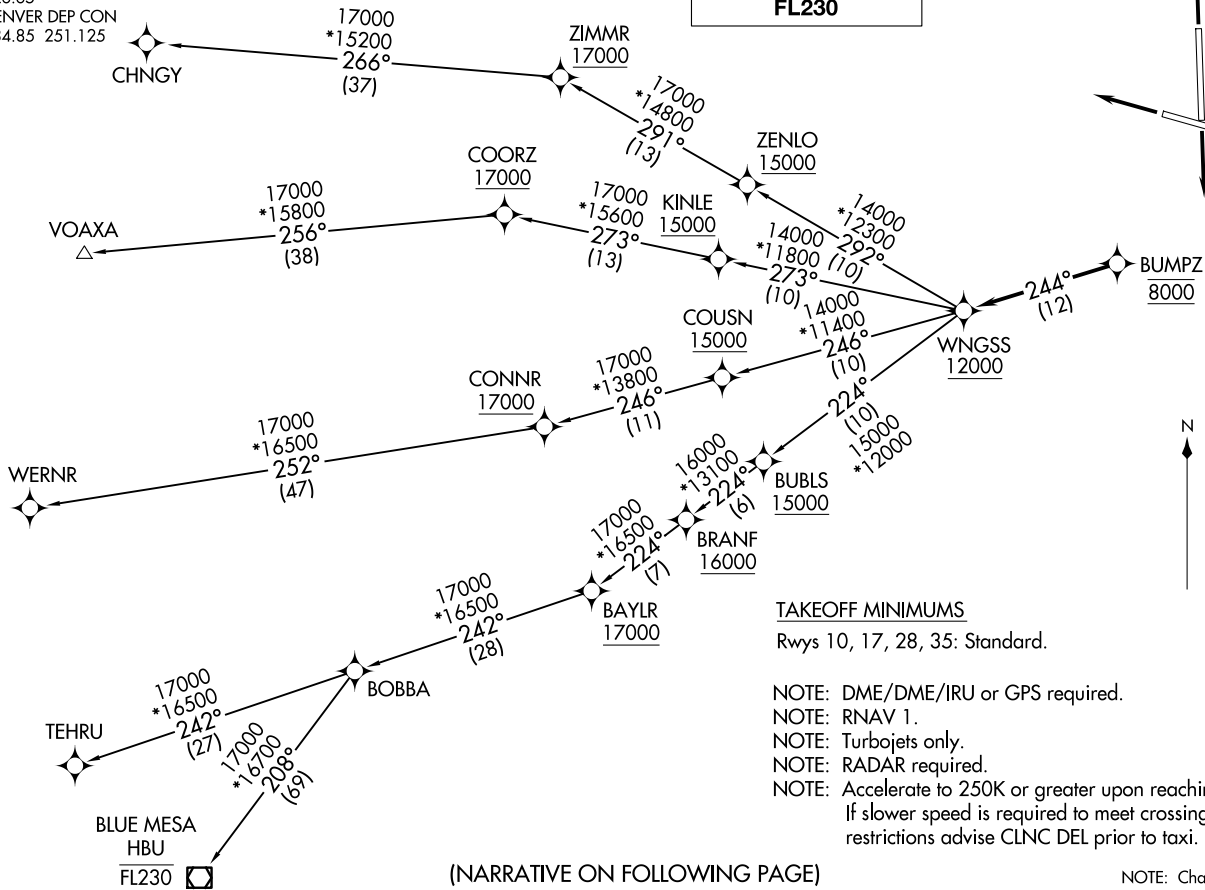
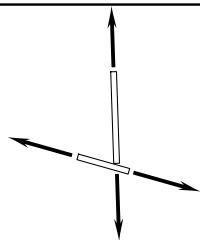
(WNGSS1.WNGSS) 20086
WNGSS ONE DEPARTURE (RNAV)

AL-325 (FAA)

GREELEY-WELD COUNTY (GXY)
GREELEY, COLORADO

CLNC DEL
126.65
DENVER DEP CON
134.85 251.125

**TOP ALTITUDE:
FL230**



TAKEOFF MINIMUMS

Rwys 10, 17, 28, 35: Standard.

- NOTE: DME/DME/IRU or GPS required.
- NOTE: RNAV 1.
- NOTE: Turbojets only.
- NOTE: RADAR required.
- NOTE: Accelerate to 250K or greater upon reaching 10000.
- If slower speed is required to meet crossing restrictions advise CLNC prior to taxi.

(NARRATIVE ON FOLLOWING PAGE)

NOTE: Chart not to scale.

GREELEY, COLORADO
GREELEY-WELD COUNTY (GXY)



DEPARTURE ROUTE DESCRIPTION

TAKEOFF RUNWAY 10: Climb on a heading between 292° CW 214° as assigned by ATC. Thence. . . .

TAKEOFF RUNWAY 17: Climb on a heading between 350° CW 212° as assigned by ATC. Thence. . . .

TAKEOFF RUNWAY 28: Climb on a heading between 294° CW 097° or between 097° CW 209° as assigned by ATC. Thence. . . .

TAKEOFF RUNWAY 35: Climb on a heading between 293° CW 169° as assigned by ATC. Thence. . . .

. . . . expect RADAR vectors to cross BUMPZ at 8000 then on track 244° to cross WNGSS at or above 12000 then on (transition) maintain FL230 or filed lower altitude. Expect higher filed altitude ten minutes after departure.

BLUE MESA TRANSITION (WNGSS1.HBU)

CHNGY TRANSITION (WNGSS1.CHNGY)

TEHRU TRANSITION (WNGSS1.TEHRU)

VOAXA TRANSITION (WNGSS1.VOAXA)

WERNR TRANSITION (WNGSS1.WERNR)

SW-1, 23 JAN 2025 to 20 FEB 2025

SW-1, 23 JAN 2025 to 20 FEB 2025