

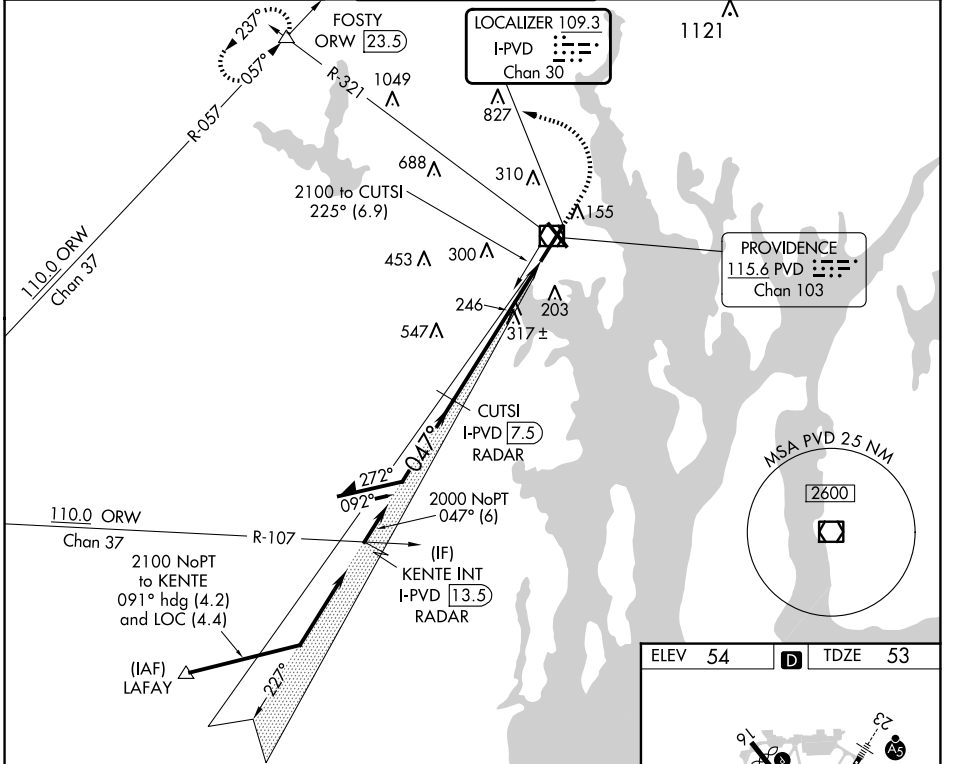
LOC/DME I-PVD 109.3 Chan 30	APP CRS 047°	Rwy Idg 8700 TDZE 53 Apt Elev 54
--	------------------------	---

ILS RWY 5 (CAT II & III)

RHODE ISLAND TF GREEN INTL (PVD)

<p>Procedure NA when control tower closed.</p>	<p>ALSF-2</p>	<p>MISSED APPROACH: Climb to 800 then climbing left turn to 2500 on heading 270° and PVD VOR/DME R-321 to FOSTY INT/ORW 23.5 DME and hold.</p>
---	---------------	--

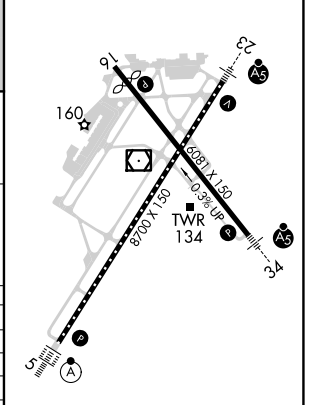
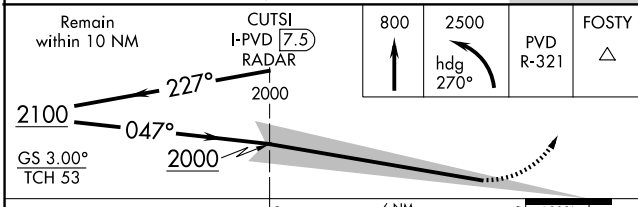
D-ATIS 124.2	PROVIDENCE APP CON * 123.675 244.875	PROVIDENCE TOWER * 120.7 (CTAF) 257.8	GND CON 121.9 348.6	CLNC DEL 126.65 348.6
------------------------	--	---	-------------------------------	---------------------------------



NE-1, 23 JAN 2025 to 20 FEB 2025

NE-1, 23 JAN 2025 to 20 FEB 2025

ELEV 54	D	TDZE 53
---------	----------	---------



CATEGORY	A	B	C	D
S-ILS 5	CAT II RA 106/12 100 DA 153			
S-ILS 5	CAT IIIa RVR 700			
S-ILS 5	CAT IIIb RVR 600			
S-ILS 5	CAT IIIc NA			

CATEGORY II & III ILS - SPECIAL AIRCREW & AIRCRAFT CERTIFICATION REQUIRED

TDZ/CL Rwy 5 **1**
 REIL Rwy 16 **1**
 HIRL Rwy 5-23 and 16-34 **1**