

LOC/DME I-UNQ <b>111.5</b> Chan 52	APP CRS <b>337°</b>	Rwy Idg <b>6081</b> TDZE <b>50</b> Apt Elev <b>54</b>
--	------------------------	---

# ILS or LOC RWY 34

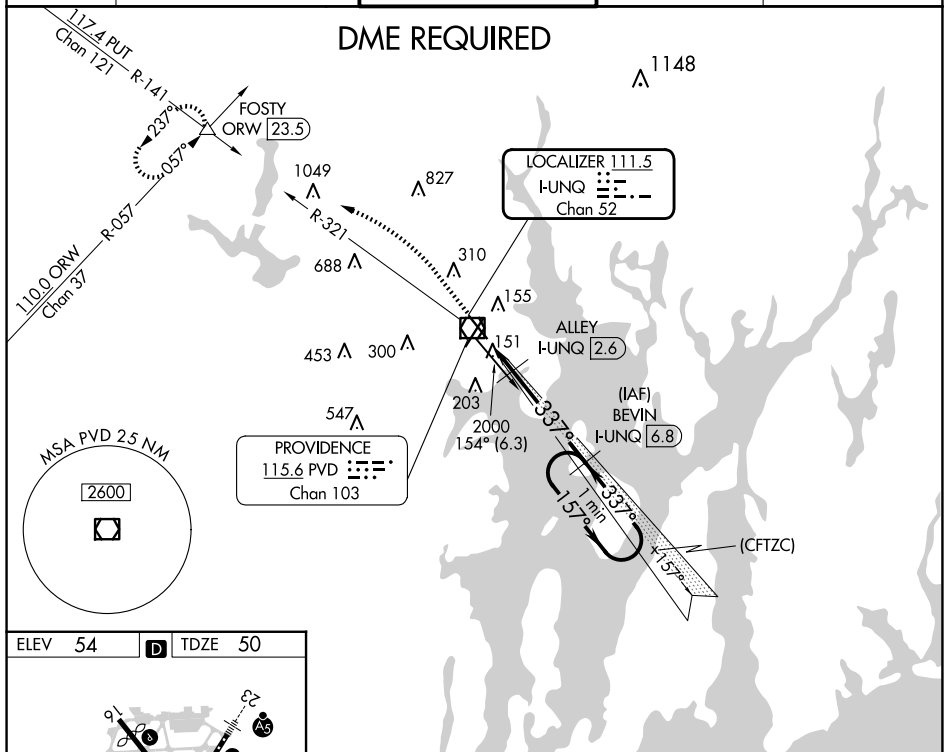
RHODE ISLAND TF GREEN INTL (PVD)

**DME required.** Rwy 34 helicopter visibility reduction below RVR 4000 NA. For inop MALSRS, increase S-LOC Cat A/B visibility to RVR 5500, and Cat C/D visibility to RVR 5000. Autopilot coupled approach NA below 300.

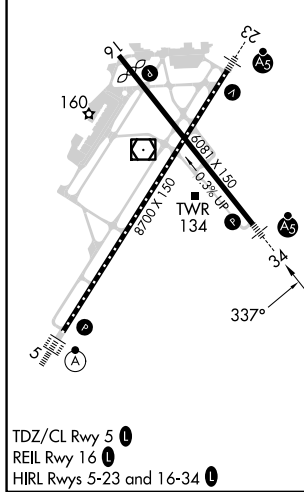
**MALSRS**  
A5

**MISSED APPROACH:** Climb to 700 then climbing left turn to 2500 on heading 300° and on PVD VOR/DME R-321 to FOSTY INT/ORW 23.5 DME and hold.

D-ATIS <b>124.2</b>	PROVIDENCE APP CON * <b>123.675 244.875</b>	PROVIDENCE TOWER * <b>120.7 (CTAF) 0 257.8</b>	GND CON <b>121.9 348.6</b>	CLNC DEL <b>126.65 348.6</b>
------------------------	--	---	-------------------------------	---------------------------------

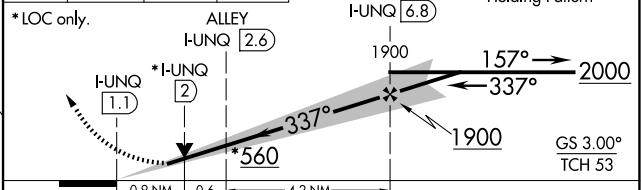


ELEV 54	<b>D</b>	TDZE 50
---------	----------	---------



TDZ/CL Rwy 5 0  
REIL Rwy 16 0  
HIRL Rwy 5-23 and 16-34 0

700 ↑	2500 hdg 300°	PVD R-321	FOSTY △	VGSI and ILS glidepath not coincident (VGSI Angle 3.00/TCH 60).
----------	------------------	--------------	------------	---



CATEGORY	A	B	C	D
S-ILS 34		331/40	281 (300-3/4)	
S-LOC 34		380/40	330 (400-3/4)	
<b>CIRCLING</b>	560-1 506 (600-1)	640-1 586 (600-1)	640-1½ 586 (600-1½)	860-2½ 806 (900-2½)

NE-1, 23 JAN 2025 to 20 FEB 2025

NE-1, 23 JAN 2025 to 20 FEB 2025