

LOC/DME I-PVD 109.3 Chan 30	APP CRS 047°	Rwy Idg 8700 TDZE 53 Apt Elev 54
--	------------------------	---

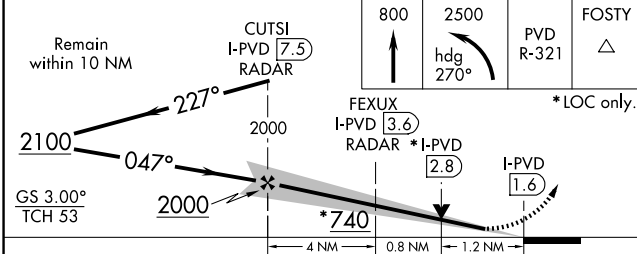
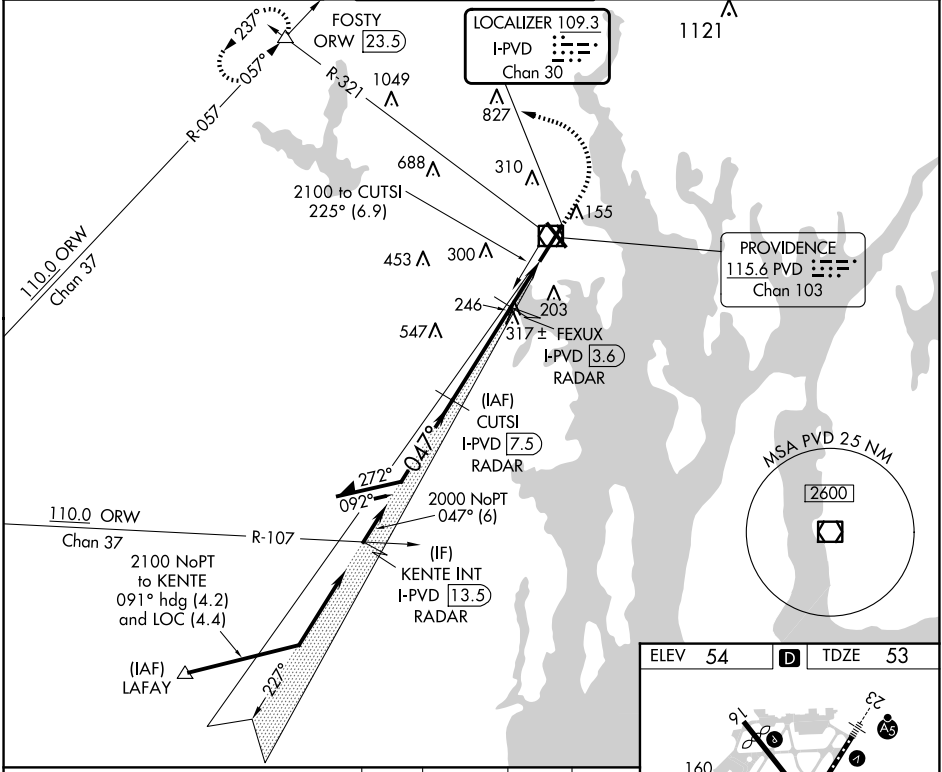
ILS or LOC RWY 5

RHODE ISLAND TF GREEN INTL (PVD)

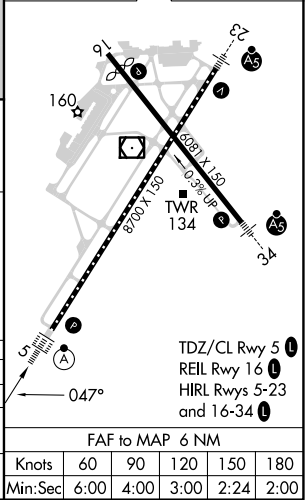
▼ When tower closed: increase S-ILS 5 all Cats and S-LOC 5 Cats A and B visibilities to 3/4 SM, and S-LOC 5 Cats C and D visibility to 1 SM.
 ▲ When control tower closed, for inop ALS, increase S-LOC 5 Cats C and D visibility to 1 1/8 SM. RADAR or DME required for localizer minimums.

ALS-2 MISSED APPROACH: Climb to 800 then climbing left turn to 2500 on heading 270° and PVD VOR/DME R-321 to FOSTY INT/ORW 23.5 DME and hold.

D-ATIS 124.2	PROVIDENCE APP CON ★ 123.675 244.875	PROVIDENCE TOWER ★ 120.7 (CTAF) 257.8	GND CON 121.9 348.6	CLNC DEL 126.65 348.6
------------------------	--	--	-------------------------------	---------------------------------



ELEV 54	D	TDZE 53
---------	---	---------



CATEGORY	A		B		C		D	
	ILS	LOC	ILS	LOC	ILS	LOC	ILS	LOC
S-ILS 5			253	18	200	(200-1/2)		
S-LOC 5	500/24	447 (500-1/2)	500/45	447 (500-3/8)				
CIRCLING	560-1 506 (600-1)	640-1 586 (600-1)	640-1 1/2 586 (600-1 1/2)	860-2 1/2 806 (900-2 1/2)				
Knots		60	90	120	150	180		
Min:Sec		6:00	4:00	3:00	2:24	2:00		

NE-1, 23 JAN 2025 to 20 FEB 2025

NE-1, 23 JAN 2025 to 20 FEB 2025