

VOR/DME PVD <b>115.6</b> Chan <b>103</b>	APP CRS <b>041°</b>	Rwy Idg <b>8700</b> TDZE <b>53</b> Apt Elev <b>54</b>
--	------------------------	--

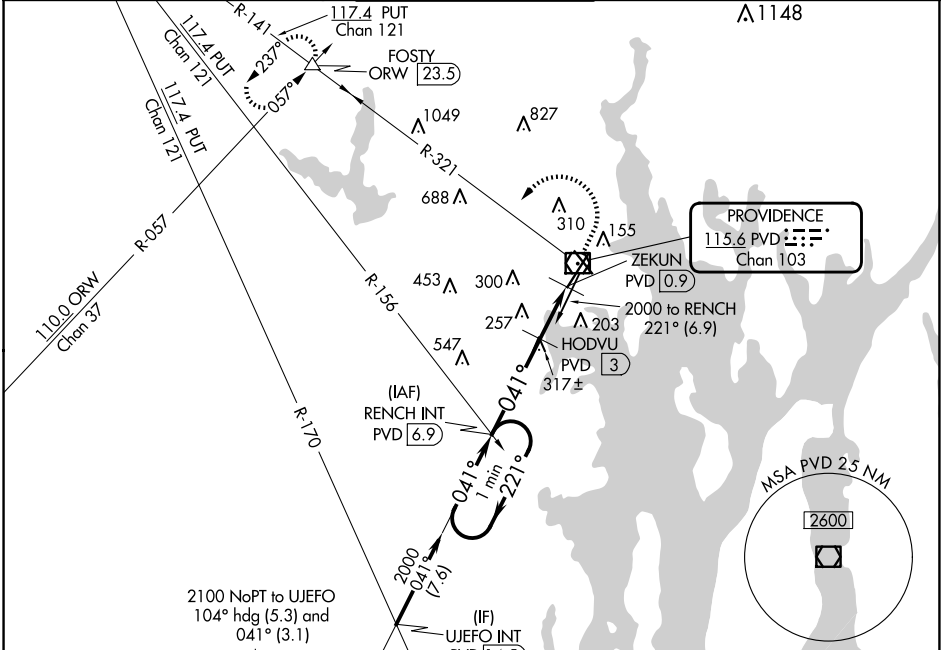
# VOR RWY 5

RHODE ISLAND TF GREEN INTL (PVD)

⚠ For inop ALS, increase S-5 Cat C/D visibility to 2 SM. When control tower closed: increase S-5 Cats A and B visibility to 3/4 SM, and S-5 Cats C and D visibility to 1 3/4 SM. When control tower closed: HODVU fix minimums: increase S-5 Cats A and B visibility to 3/4 SM, and S-5 Cats C and D visibility to 1 3/4 SM.

ALSF-2  
⚠ MISSED APPROACH: Climb to 800 then climbing left turn to 2500 on PVD VOR/DME R-321 to FOSTY INT/ORW 23.5 DME and hold.

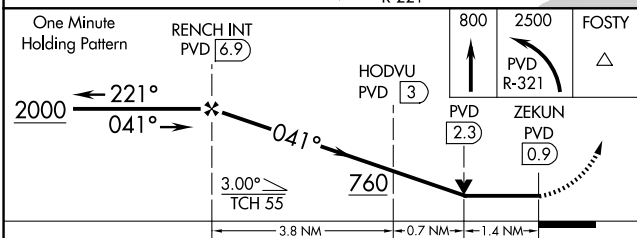
D-ATIS <b>124.2</b>	PROVIDENCE APP CON ★ <b>123.675 244.875</b>	PROVIDENCE TOWER ★ <b>120.7 (CTAF) 257.8</b>	GND CON <b>121.9 348.6</b>	CLNC DEL <b>126.65 348.6</b>
------------------------	--	---	-------------------------------	---------------------------------



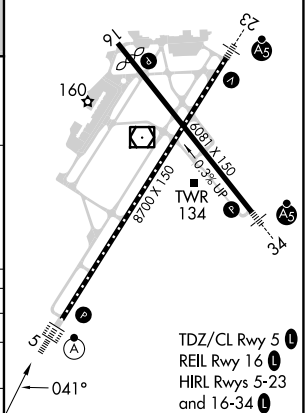
NE-1, 23 JAN 2025 to 20 FEB 2025

NE-1, 23 JAN 2025 to 20 FEB 2025

ELEV 54	D	TDZE 53
---------	---	---------



CATEGORY	A	B	C	D
S-5	760/24	707 (800-1/2)	760-1 5/8	707 (800-1 5/8)
<b>C</b> CIRCLING	760-1	706 (800-1)	760-2 706 (800-2)	860-2 1/2 806 (900-2 1/2)
HODVU FIX MINIMUMS				
S-5	560/24	507 (600-1/2)	560/55	507 (600-1)
<b>C</b> CIRCLING	560-1 506 (600-1)	640-1 586 (600-1)	640-1 1/2 586 (600-1 1/2)	860-2 1/2 806 (900-2 1/2)



FAF to MAP 5.9 NM					
Knots	60	90	120	150	180
Min:Sec	5:54	3:56	2:57	2:22	1:58